

CENTURA

sarlon surestep®

LAGUNA
MATERIAL
STAR
STEEL

SLIP RESISTANT COMMERCIAL VINYL SHEET FLOOR COVERING
REVÊTEMENT DE SOL COMMERCIAL / VINYLE ANTIDÉRAPANT

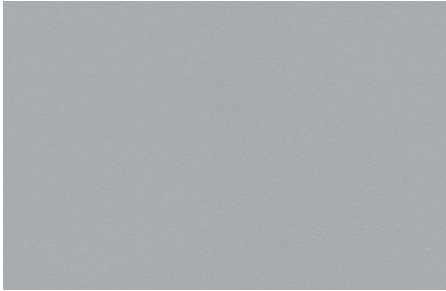


by/par **forbo**

LAGUNA



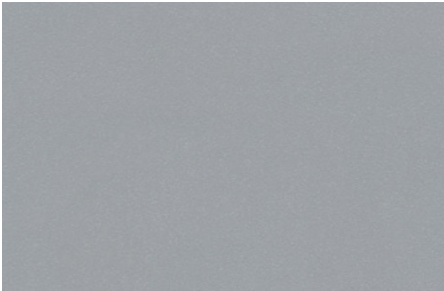
LRV 55% trout 181262



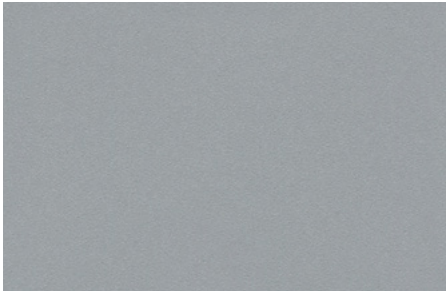
LRV 42% silver grey 181862



LRV 38% greige 181482



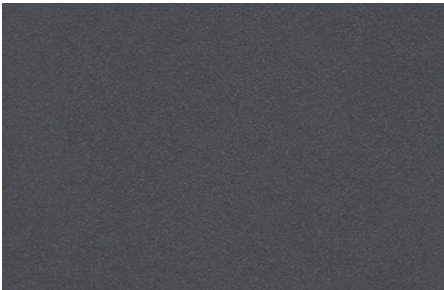
LRV 28% mouse 181692



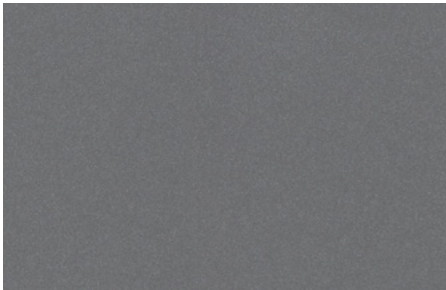
LRV 26% pewter 181072



LRV 28% concrete 181922



LRV 10% lava 181592



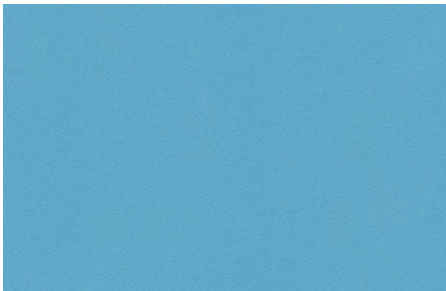
LRV 18% elephant 181092



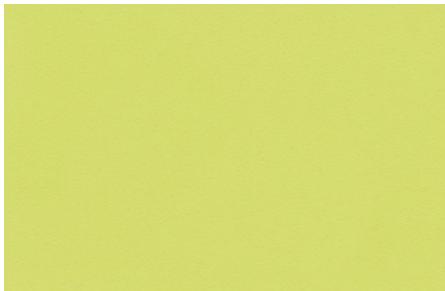
LRV 16% coal 181632



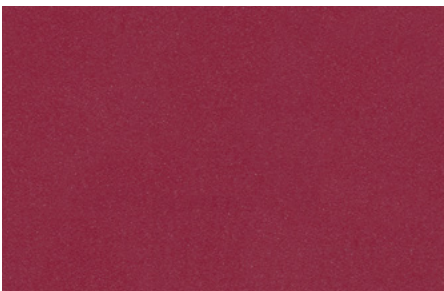
LRV 35% flamingo 181912



LRV 33% aquamarine 181982



LRV 70% lemon 181802



LRV 12% magenta 181972



LRV 16% lagoon 181822



LRV 19% emerald 181882

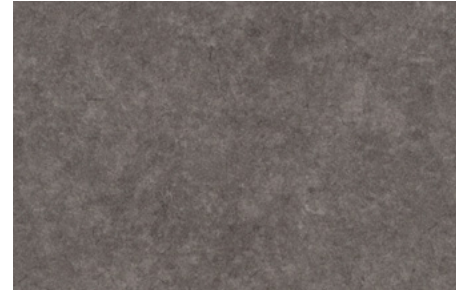
MATERIAL



LRV 37% cool concrete 17122



LRV 22% taupe concrete 17412



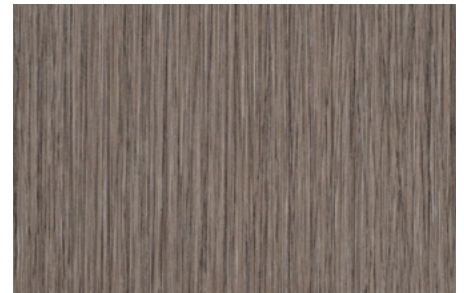
LRV 17% grey concrete 17162



LRV28% beton concrete 17422



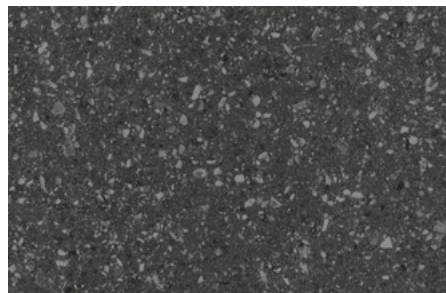
LRV 21% quartz stone 17512



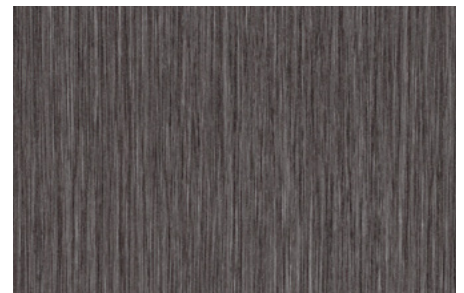
LRV 18% grey seagrass 18562



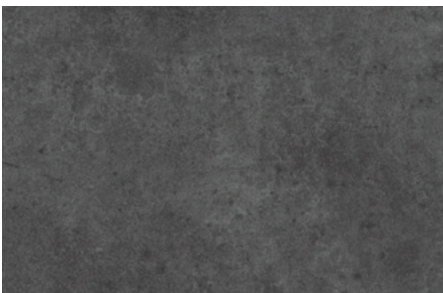
LRV 25% blue concrete 17132



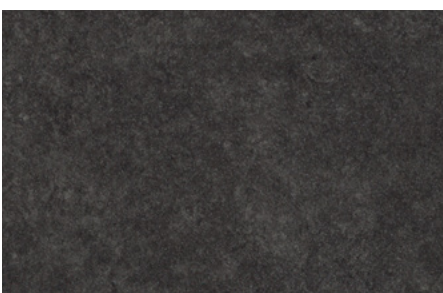
LRV 12% coal stone 17532



LRV 13% black seagrass 18572



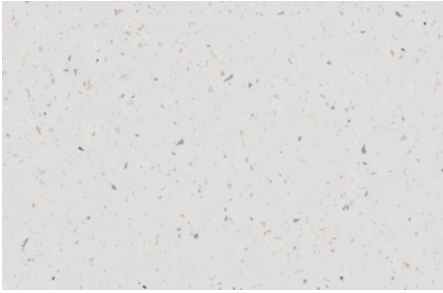
LRV 15% gravel concrete 17482



LRV 8% black concrete 17172

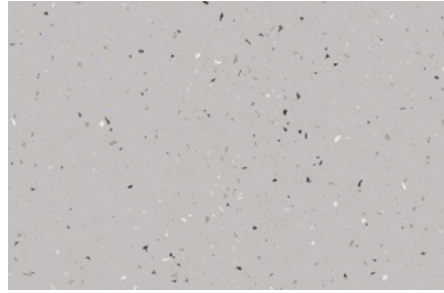


STAR



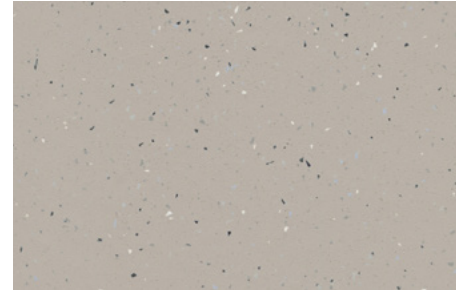
LRV 75%

snow 176082



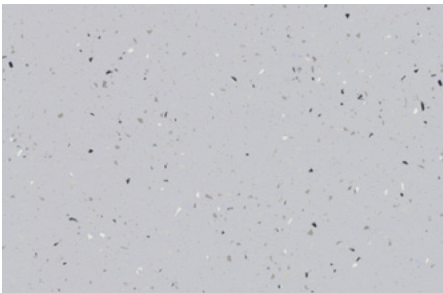
LRV 47%

smoke 176032



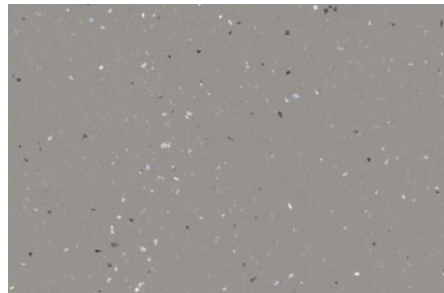
LRV 45%

mortar 176312



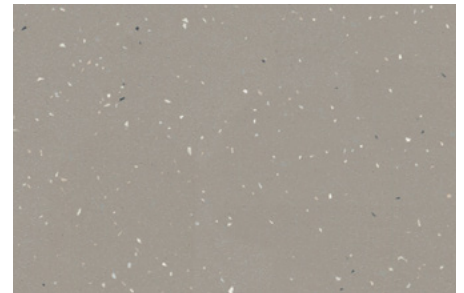
LRV 54%

trout 176422



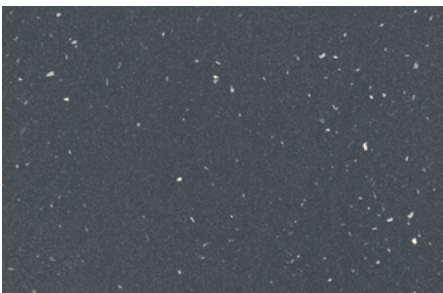
LRV 28%

concrete 176922



LRV 30%

cement 176772



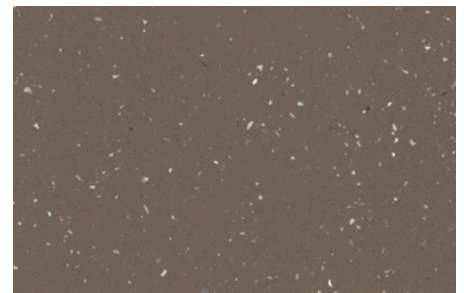
LRV 10%

lava 176592



LRV 14%

mercury 176952



LRV 19%

umber 176262



STEEL



LRV 17%

metallic carbon 177982



LRV 13%

metallic lava 177592



LRV 10%

metallic charcoal 177992



LRV 19%

metallic mercury 177852





DESCRIPTION

Family / Famille	SARLON SURESTEP	LAGUNA	MATERIAL	STAR	STEEL
Construction	Guaranteed Slip Resistant Performance. Heterogeneous commercial compact vinyl sheet flooring embedded with "Step Crystal" particles, reinforced with a glass fiber mesh and recycled content. / Revêtement de sol commercial antidérapant hétérogène de vinyle compact, incrusté de particules "Step Crystals", renforcé d'un voile de fibre de verre et de matières recyclées.				
Type / Style	All over slip resistant fine particles / Faux fini de particules antidérapantes.				
Standard / Norme	Commercial Use : Exceeds ASTM F1303 Type 1, Grade 1, Class B Backing Usage Commercial : surpasse ASTM F1303 Type 1, Grade 1, endos Class B				
Total Thickness / Épaisseur	0.080" (2,0 mm)				
Wear Layer / Couche d'usure	0.028" (0,70 mm)				
Width / Largeur	6'6" (2 m)				
Length / Longueur	82 L.ft (25 mL)				
Roll Coverage / Surface rouleau	60 sq.y (50 m ²)				
Weight / Poids	4.4 lb/ sq.y (2,75 kg/m ²)				
Surface Finish / Protection	PUR: No Wax, No Spray Buff, for the life of the product / Pas de cirage, pas de vaporisation, pour la vie du produit				

PERFORMANCE



Chemical and Stain Resistance Résistance chimique et aux taches	Very good when tested in accordance with ASTM F925 / Très bon lorsque mis à l'essai en conformité selon ASTM F925
Slip Resistance / Résistance au glissement	Meets or exceeds the industry recommendations for flat surfaces when tested in accordance with ASTM D2047 Rencontre les recommandations de l'industrie pour les surfaces planes, lorsque testé selon ASTM D2047
Static Load Resistance Résistance au poinçonnement	Exceeds ASTM F970 : 850 PSI / Surpasse ASTM F970 : 850 PSI
Wheel Castor Resistance Résistance chaise à roulettes	Pass EN425: suitable for office chairs with castors / Conforme EN425: convient pour chaises de bureau avec roulettes
Dimensional Stability / Stabilité dimensionnelle	ISO 23999 : <0.1 %
Thermal Conductivity / Conductivité thermique	EN12524: 0.25 W / mK Suitable for heated floors max 27°C (85°F) / Convient aux planchers chauffants
Impact Insulation Class / Bruit de choc	EN ISO 717-2: ΔL = 5 dB
Sound Transmission Class / Sonorité à la marche	NF S 31-074: L < 75 dB classe B
Flame Spread and Smoke Development Propagation des flammes et Dégagement de fumée	Compliant with the Canadian Building Code when tested in accordance with CAN/ULC - S102.2 Répond aux exigences du Code du Bâtiment Canadien, lorsque testé selon CAN/ULC - S102.2

ENVIRONMENTAL / ENVIRONNEMENT



Micro-Organism Resistance Résistance micro-organisme	EN-ISO 846 Bacteriostat, no growth Bactériostatique, pas de croissance
Indoor Air Quality, VOC Emission : v4, Credit 2 Qualité air intérieur, émissions VOC : v4, Credit 2	Compliant with CDPH 01350 Requirements Répond aux exigences CDPH 01350
Low Emitting Material: Credit 4, option 1 Matériel à émissions réduites: Credit 4, option 1	Adhesive comply with SCAQMD Rule #1168 Adhésif en conformité pour émissions COV
Recycled content 50% backing: Credit 4, option 2 Contenu recyclé endos 50% : Credit 4, option 2	100 % Recyclable
Plants Certifications / Certificats usines	ISO 9001, ISO14001, OHSAS 18001
Health and Safety / Hygiène et sécurité	Complies with REACH regulation Conforme au règlement REACH
Warranty: Limited 10 years Garantie: Limitée de 10 ans	Special conditions & terms, on request Conditions et termes spéciaux, sur demande

Exclusively distributed by Centura / Distribué exclusivement par Centura : www.centura.ca

VANCOUVER
T (604) 298-8453

CALGARY
T (403) 259-0106

EDMONTON
T (780) 454-8591

PETERBOROUGH
T (705) 743-2881

TORONTO
T (416) 785-5165

QUÉBEC
T (418) 653-5267

MONTRÉAL
T (514) 336-4311

LONDON
T (519) 681-1961

WINDSOR
T (519) 966-3580

HAMILTON
T (905) 383-5100

OTTAWA
T (613) 820-6622

MONCTON
T (506) 853-0123

HALIFAX
T (902) 468-7679

ST.JOHN'S
T (709) 579-4600