



AmericanBiltrite
Flooring



Declare.

ABPURE | INFINITY

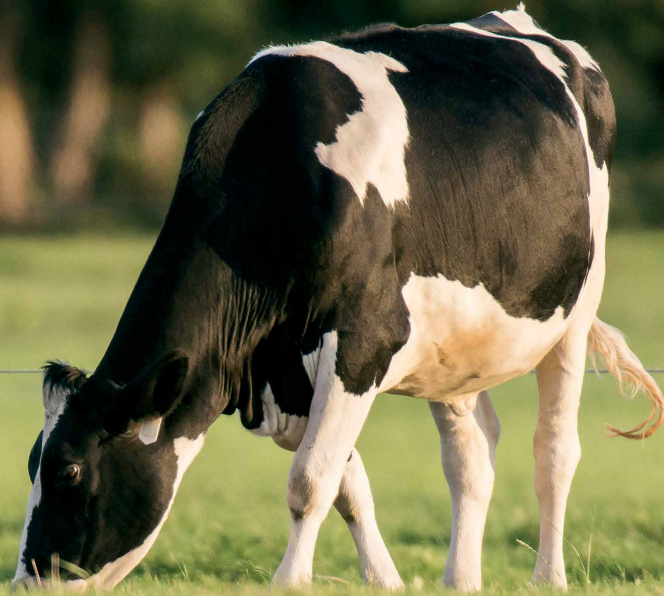
OCCUPANCY READY RUBBER SHEET

ABPURE[®]
Infinity Collection
with Nfuse[®] technology



Carbon Neutrality

ABPURE® Nfuse® Infinity
is a cradle-to-gate
Carbon Neutral rubber
sheet flooring made
with renewable natural
gas (RNG) from 100%
organic waste.



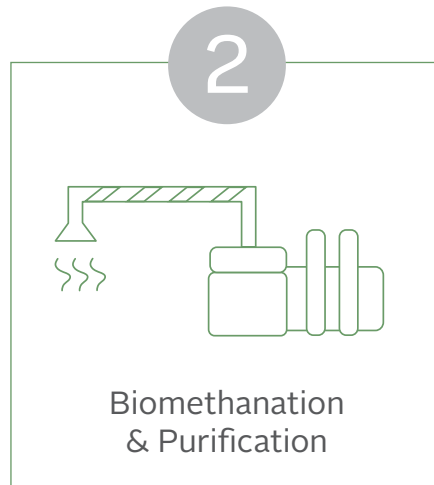
Specifying carbon neutral materials has a direct impact on reducing the embodied carbon of buildings.



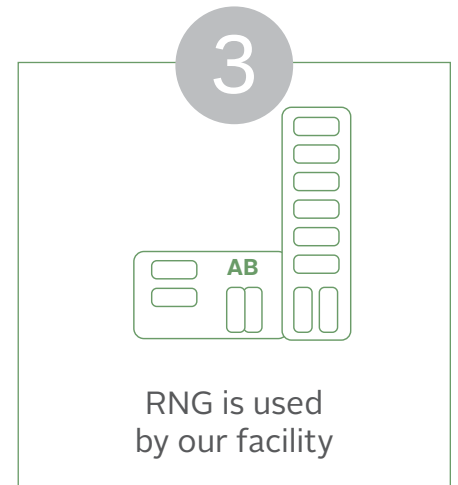
How does using Renewable Natural Gas (RNG) make ABPURE® Infinity carbon neutral?



Instead of letting organic waste go to landfills where they would release greenhouse gases, the organic waste from industrial, commercial, agricultural and even residential activities are collected.



This organic waste is transported to a biomethanation farm where it is fermented to generate a gas that is then purified, to become a renewable natural gas made from 100% organic waste.



We use the full amount of renewable natural gas made from 100% organic waste to offset ABPURE's cradle-to-gate carbon footprint, as measured in our Environmental Product Declaration (EPD).

It's more than being carbon neutral or carbon negative – it's helping to reduce greenhouse gases at the source.



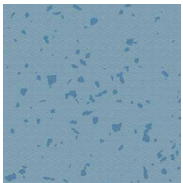


Oasis

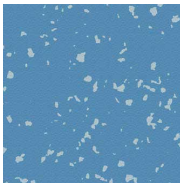
Soothing biophilic colors that provide the healing and restorative powers of nature.

The Infinity color palette brings the benefits of the natural environment indoors – from lake blues to eco greens.

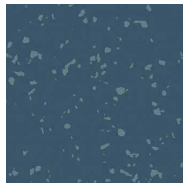
Lake Blues



ABI-91
CLARITY BLUE



ABI-93
EXPANSE BLUE



ABI-96
LAKE BLUE

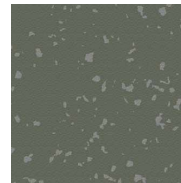


ABI-99
INFINITY BLUE

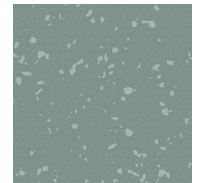
Eco Greens



ABI-80
ENGAGED GREEN



ABI-88
ECO GREEN



ABI-86
RENEW GREEN

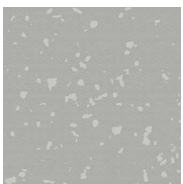


Engage

Warm, nostalgic colors that reconnect us to simpler and more familiar times.

Humans are prone to sentimental longing for a return to simpler, pleasant, and more familiar times. These nostalgic colors, from warm greys to basic beiges, create the basis for a path to a more healthful future.

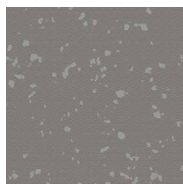
Warm Greys



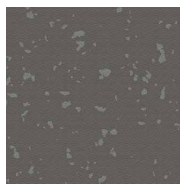
ABI-22
ARCADIAN GREY



ABI-24
RESTFUL GREY



ABI-26
FAMILIAR GREY

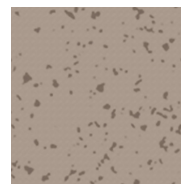


ABI-28
MINERAL GREY

Basic Beiges



ABI-40
HYGGE BEIGE



ABI-44
FIKA BEIGE

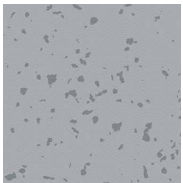


Nexus

The forces of nature and bio-engineering technology combine to deliver optimal benefits.

A palette of contemporary mineral greys and white connects us to the healing and combined forces of both the natural realm and the expanding potential of bio-engineering technology.

Cool Greys



ABI-21
QUIET GREY

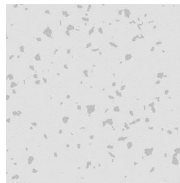


ABI-25
SENSIBLE GREY



ABI-27
MINDFUL GREY

Pure White



ABI-15
LAGOM WHITE



Jovial

A versatile trio of uplifting organic accent colors.

No palette is quite complete without a dose of cheerfulness. The organic accent hues are reminiscent of the Italian Riviera – both uplifting and relaxing, as any seaside resort should be. Ideal to use as a wayfinding element or in a pediatric environment.

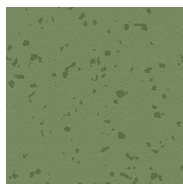
Organic Accents



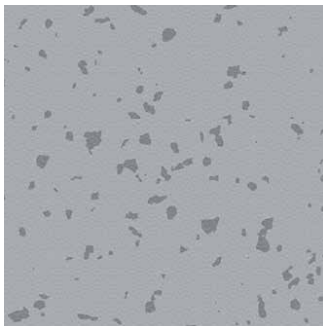
ABI-71
PACIFIC YELLOW



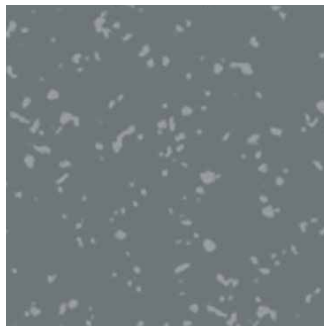
ABI-54
EARTH CORAL



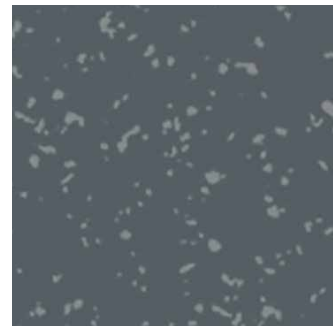
ABI-82
FRESH GREEN



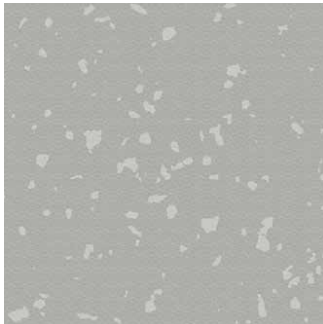
ABI-21
QUIET GREY
LRV: 53.5



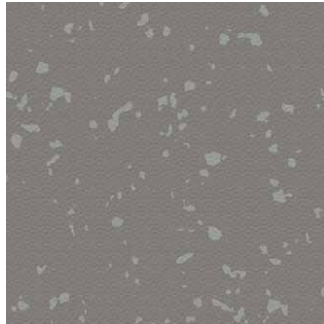
ABI-25
SENSIBLE GREY
LRV: 36.90



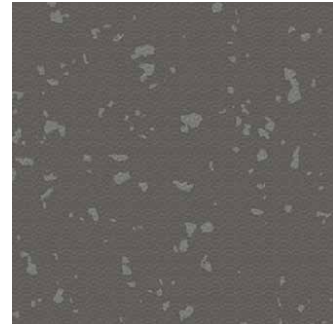
ABI-27
MINDFUL GREY
LRV: 23.40



ABI-22
ARCADIAN GREY
LRV: 59.6



ABI-26
FAMILIAR GREY
LRV: 39.1



ABI-28
MINERAL GREY
LRV: 27.5



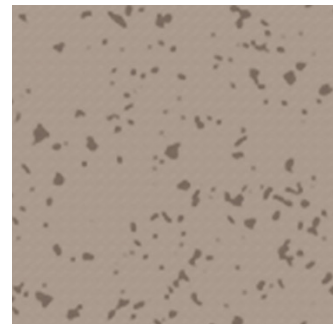
ABI-24
RESTFUL GREY
LRV: 59



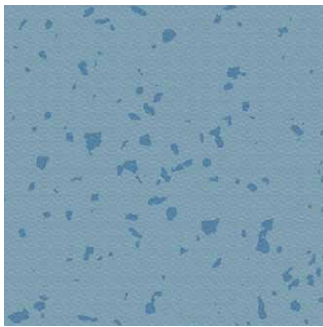
ABI-15
LAGOM WHITE
LRV: 85.2



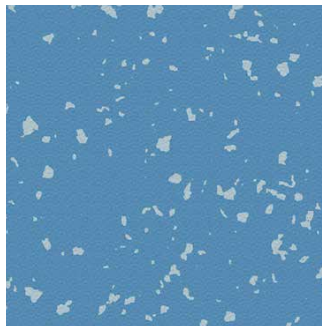
ABI-40
HYGGE BEIGE
LRV: 59.4



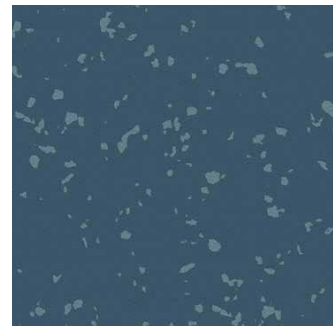
ABI-44
FIKA BEIGE
LRV: 49.9



ABI-91
CLARITY BLUE
LRV: 53.9



ABI-93
EXPANSE BLUE
LRV: 33.3



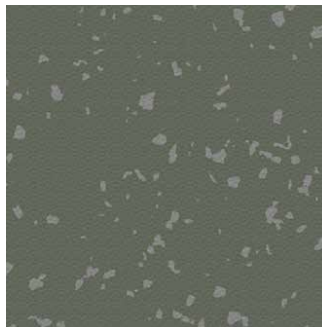
ABI-96
LAKE BLUE
LRV: 17.1



ABI-99
INFINITY BLUE
LRV: 6.1



ABI-80
ENGAGED GREEN
LRV: 54.4



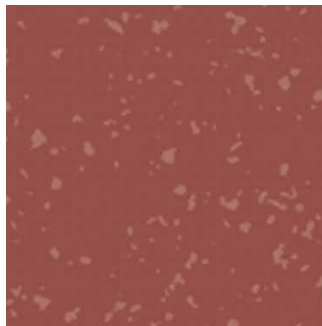
ABI-88
ECO GREEN
LRV: 33.2



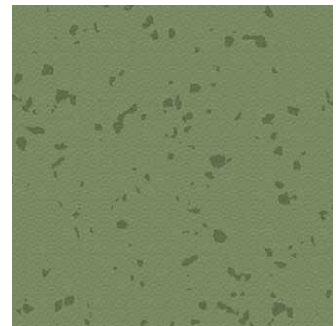
ABI-86
RENEW GREEN
LRV: 41.8



ABI-71
PACIFIC YELLOW
LRV: 65.2



ABI-54
EARTH CORAL
LRV: 27.4



ABI-82
FRESH GREEN
LRV: 43.2



Color Coordination

A wide range of colors are a good match to Inpro® wall paneling and some of the most popular paint colors for easy color coordination of interior finishes.

- ▶ **ABI-15**
LAGOM WHITE
- ▶ **ABI-24**
RESTFUL GREY
- ▶ **ABI-26**
FAMILIAR GREY



ABPURE Infinity

Inpro Reference

SKU Number	Color Name	Color Code	Color Name
<u>Pure White</u>			
● ABI-15	LAGOM WHITE	0238	FEATHER
<u>Warm Greys</u>			
● ABI-28	MINERAL GREY	0237	SLATE
● ABI-26	FAMILIAR GREY	0119	PEPPERDUST
● ABI-24	RESTFUL GREY	0113	TAUPE
● ABI-22	ARCADIAN GREY	0113	TAUPE
<u>Cool Greys</u>			
● ABI-21	QUIET GREY		
● ABI-25	SENSIBLE GREY		
● ABI-27	MINDFUL GREY	0107	PEWTER GRAY
<u>Basic Beiges</u>			
● ABI-40	HYGGE BEIGE	0114	HAZE
● ABI-44	FIKA BEIGE	0118	KHAKI BROWN
<u>Organic Accents</u>			
● ABI-71	PACIFIC YELLOW	0249	BEESWAX
● ABI-54	EARTH CORAL		
● ABI-82	FRESH GREEN		
<u>Eco Greens</u>			
● ABI-80	ENGAGED GREEN	0242	CACTUS
● ABI-88	ECO GREEN	0230	SEAGRASS
● ABI-86	RENEW GREEN	0187	CRYSTAL JADE
<u>Lake Blues</u>			
● ABI-91	CLARITY BLUE		
● ABI-93	EXPANSE BLUE	0132	BUOYANT BLUE
● ABI-96	LAKE BLUE	0134 0189	CADET BLUE SKYLIGHT
● ABI-99	INFINITY BLUE	0165	POINT BLUE

Contact your sales representative visit www.american-biltrite.com/flooring to get the full list of coordinating paint colors.



Non-Toxic Rubber Flooring

- PVC free, chlorine free, phthalate free, no formaldehyde, and crystalline silica free
- Contains 10% pre-consumer recycled materials
- Best indoor air quality
 - FloorScore® Certified
 - Does not generate harmful VOCs
- No wax for life
 - No chemical products needed to remove or clean production residues
 - No negative impact on water waste
 - Reduces the need to use chemicals with high VOC emissions thus promoting better indoor air quality

Declare.





Comfortable for Staff Safer for Patrons

ABPURE Nfuse rubber flooring provides ergonomic properties.



Ergonomic benefits and comfort underfoot can enhance workplace safety and productivity.

Acoustic properties

- Reduces ambient noise
- Ideal for environments such as hospital hallways, patient rooms, break rooms, cafeterias, multi-use rooms

Underfoot comfort

- More flexible than hard surfaces
- Ergonomic benefits for joints and foot suppleness
- Perfect for hospital staff standing long hours i.e., in operating rooms



PURE Colors That Last



ABPURE Nfuse patented rubber formula provides PURE colors that last.

- PURE white, beiges and blues that won't yellow or fade, no matter how light the color
- Meets ASTM F 1515 color stability standard for all the colors
- 10-year colorfastness warranty

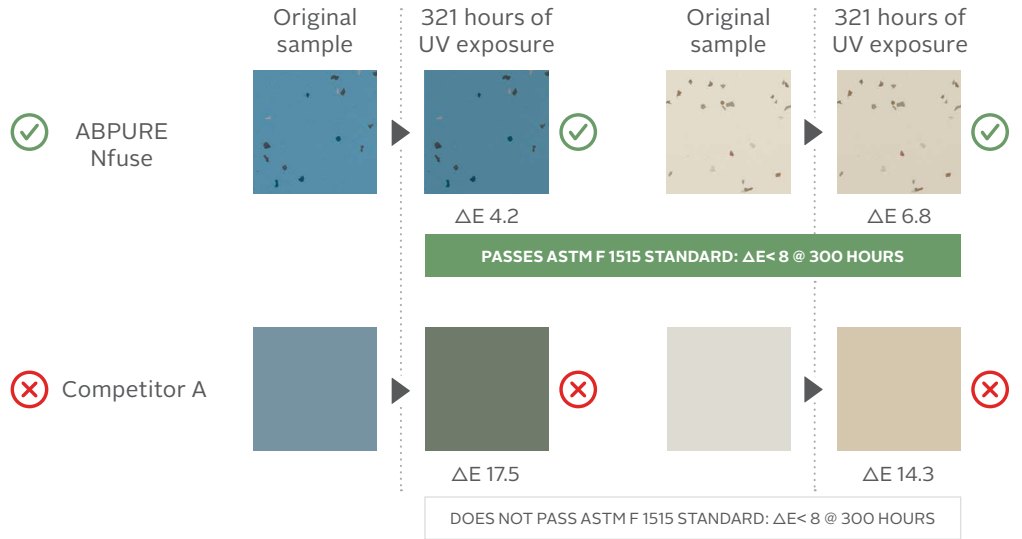


Your flooring keeps its original color

Blues stay blue and won't turn green. Light beige won't turn yellow. Rest assured that your flooring will always match the other colors in your environment and will remain intact for years to come.

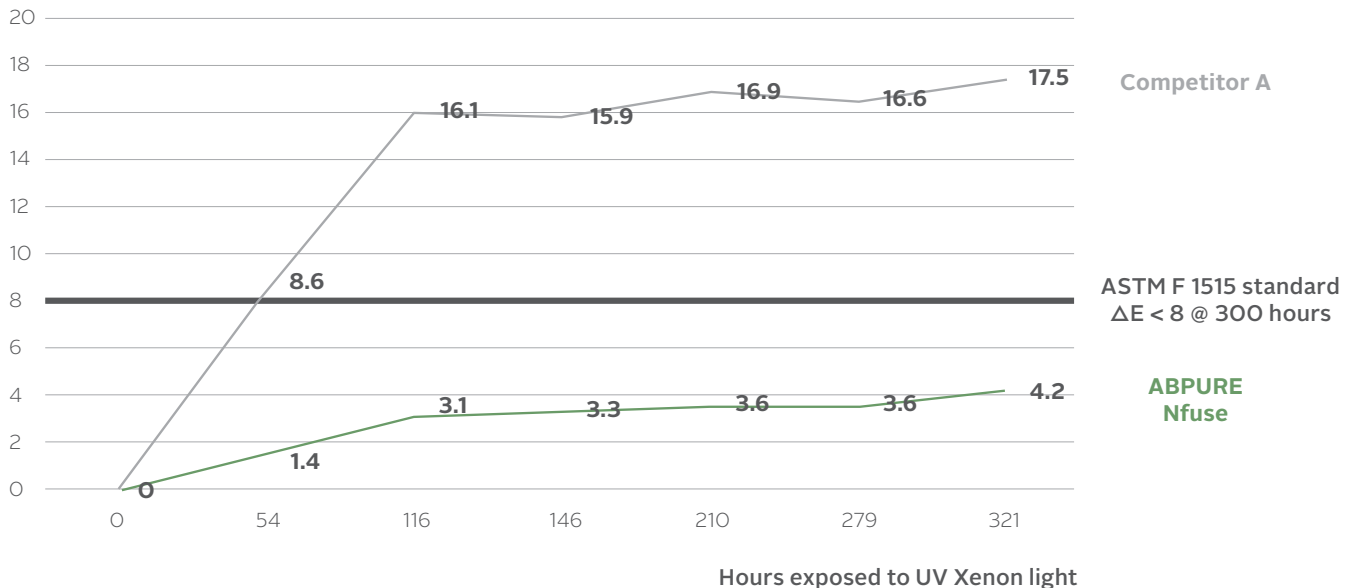
Light stability test method according to ASTM F 1515 standard

To pass ASTM F 1515, no color deviation (delta) over 8 should be observed after 300 hours of exposure to a UV lamp.



ABPURE Nfuse flooring provides superior color stability meeting the ASTM F 1515 color stability standard. Other rubber floors experience a color deviation up to 4 times higher than ABPURE and do not meet the ASTM F 1515 requirements.

ΔE (color deviation)





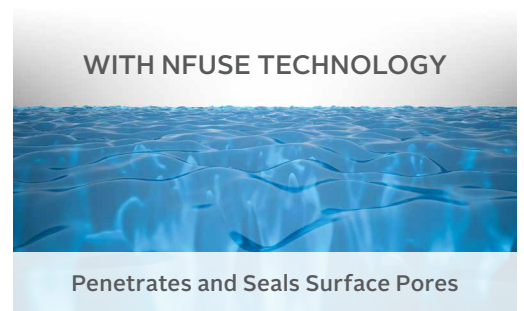
Informed Flooring Decisions Based on Science



More than ever, institutions rely on rigorous cleaning and disinfection programs to limit the spread of infections in the built environment. Choosing durable and easy-to-clean flooring has become essential.

ABPURE Nfuse was tested with EPA List-N recommended disinfectants and showed the most positive response, being the least prone to tarnish with increased disinfection protocols compared to other rubber floors.

Nfuse technology is an overall product treatment technology that penetrates into the pores and seals the flooring.



ABPURE Nfuse is an occupancy ready rubber flooring allowing to save time and money during installation and beyond – and is a better choice for environmental sustainability.

- No initial set-up required
- Immediate access
- No waxing, stripping or sealant, for the lifetime of the floor, which means no negative impact on wastewater systems and better indoor air quality
- Excellent stain and tarnish resistance

ABPURE Nfuse is proven to be easy to clean and disinfect, showing the least tarnishing after repeated disinfection.

Example of results after 24 hours of exposure to quaternary ammonium-based Clorox (used in over 50% of disinfection products on the market).



Test methodology

- Similar to the ASTM F 925 standard for stain and chemical resistance.
- Disinfectant solutions from the EPA's List N were applied for 60 minutes and 24 dwell hours.
- A score of 0 to 3 was assigned for three criteria: surface attack, color change and tarnishing.

Tarnishing results

	Accel Five TB		Cavicide		Clorox Germic. BC		Clorox Quaternary		GL-100		Opti-Cide 3		Oxivir TB		Phenol 5%		Spor-Klenz	
	H ₂ O ₂		QAC / IPA		NaOCl		QAC		QAC		QAC / IPA		Benzyl Alcohol / H ₂ O ₂		Phenol		Acetic Acid / H ₂ O ₂	
	1h	24h	1h	24h	1h	24h	1h	24h	1h	24h	1h	24h	1h	24h	1h	24h	1h	24h
ABPURE Nfuse	0	0	0	0	0	0	0	0	1	1	0	0	0	0	1	1	0	0
Rubber SBR-1	0	0	0	0	0	0	2	2	2	2	0	0	1	0	0	0	0	1
Rubber SBR-2	0	0	0	1	0	0	2	1	1	2	0	1	1	1	1	1	0	1
Linoleum-1	0	0	0	0	0	0	0	1	0	1	0	0	1	1	3	2	0	0



Learn more in our white paper "The response of rubber floor coverings to disinfectants": www.american-biltrite.com/flooring

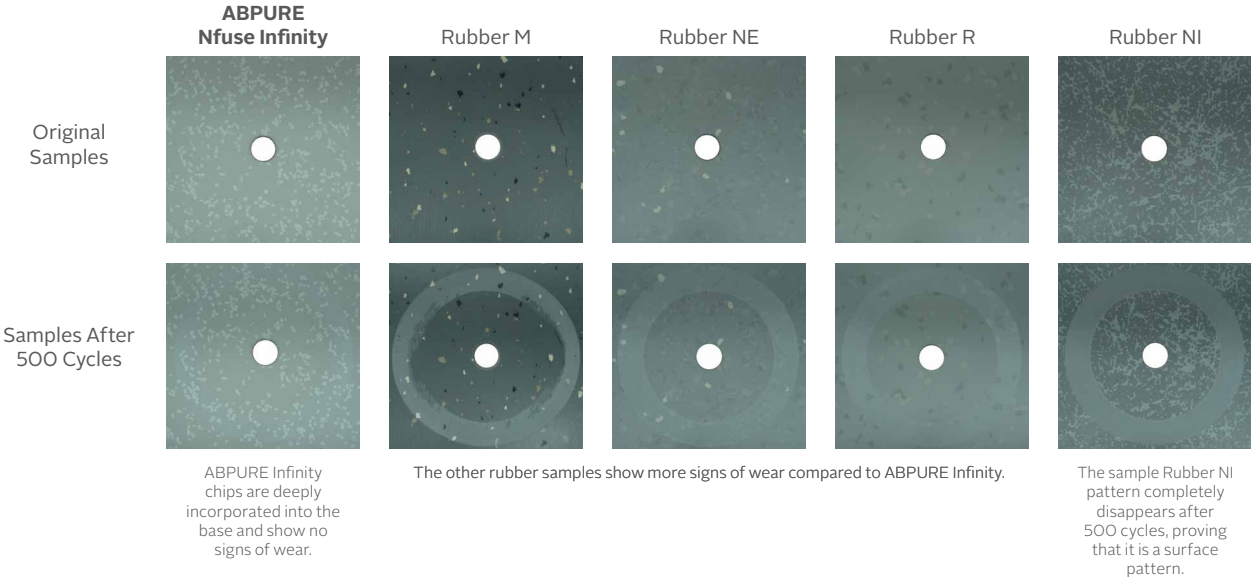


Durability Put to the Test

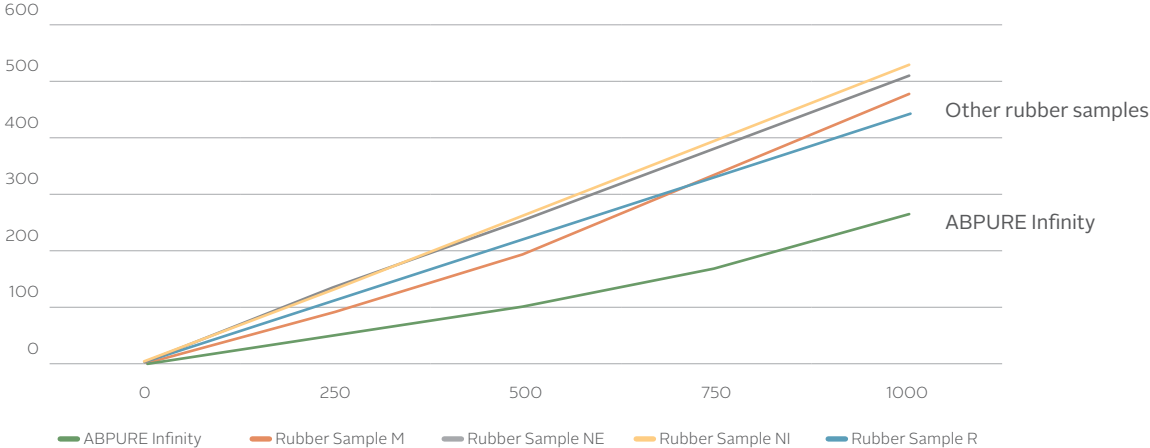
Designed for high traffic and demanding environments such as hospitals and schools.

- Superior resistance to indentations and heavy loads up to 2,000 PSI according to ASTM F 970 modified standard
- Resistant to rolling loads, from medical equipment and hospital beds to folding cafeteria tables on wheels
- Limited 10-year warranty from manufacturer

ABPURE Infinity outperforms all other rubber flooring tested with the modified Taber abrasion* test, proving it to be the most resistant, durable rubber flooring.



Cumulative Mass Loss in mg After 250 Cycles



ABPURE Infinity is 2X more resistant to abrasion compared to other rubber floors

Cumulative Average Mass Loss in mg After 250 Cycles	Number of Cycles				
	0	250	500	750	1000
ABPURE Nfuse Infinity	0	50	101	170	268
Rubber Sample M	0	88	198	340	478
Rubber Sample NE	0	132	248	388	513
Rubber Sample NI	0	126	268	405	535
Rubber Sample R	0	110	215	337	437

*Modified Taber abrasion test ASTM D 3389 was conducted by resurfacing the abrasive wheel every 250 cycles.

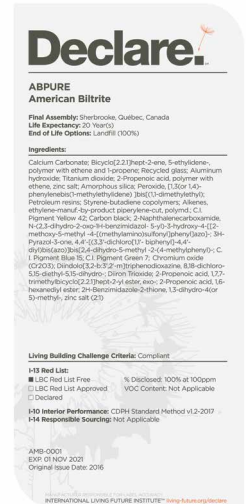


American Biltrite Flooring

ABPURE® INFINITY WITH NFUSE® TECHNOLOGY

TECHNICAL SPECIFICATIONS

Gauge	3 mm	0.118"
Size	1.5 m x 15.2 m	60" nominal x 50'
Product Classification		
ASTM F 1859	Rubber Sheet Floor	Type 1 (Homogeneous)
ASTM D 2047	Static Coefficient of Friction (leather / neolite)	≥ 0.7 / ≥ 1.0
ASTM D 3389	Abrasion Resistance (H-18,500 g @ 1,000 cycles)	Pass
ASTM E 648	Critical Radiant Flux CRF (W/cm ²)	≥ 0.45
ASTM E 662	Smoke Density	≤ 450
ASTM E 989 / E492	Sound Absorption (with a suspended ceiling)	IIC 59
ASTM F 925	Chemical Resistance	Exceeds
ASTM F 970	Static Load (modified at 2,000 psi)	≤ 0.005"
ASTM F 1514	Heat Stability	ΔE ≤ 8.0
ASTM F 1515	Light Stability	ΔE ≤ 8.0
ASTM G 21	Antimicrobial Resistance Test	Pass (28 days)
Indoor Air Quality (IAQ):		FloorScore Certified by SCS Certification
Volatile Organic Compounds (VOC's)		Registration Number SCS-FS-01492
Adhesives:	AD-777	Regular traffic
	AD-590	Heavy rolling loads, under patients' beds, non-acclimatized entrance zones
Limited Wear Warranty		10 years
Resistance to oils and greases	ABPURE is not recommended for environments where it could be exposed to oils and greases, whether mineral, animal or vegetable.	
Antimicrobial	IMPORTANT: All our ABPURE rubber flooring, through its composition and without the use of antimicrobial chemicals, does not promote microbial growth.	



Please note that technical website documents prevail.

ABPURE Infinity can be made in custom colors, 2 mm sheet, 18" X 18" and 36" X 36" tiles with minimum runs as low as 2200 sq. ft. / sku. Contact your regional sales manager so we can provide you with a custom solution.

® / ABPURE is a registered trademark of American Biltrite

® / Nfuse is a registered trademark of American Biltrite

american-biltrite.com



American Biltrite, 200 Bank Street, Sherbrooke, Quebec, Canada J1H 4K3
To order samples: flooring@american-biltrite.com | 1-800-437-8743 | Fax 1-800-810-5731 | Technical Services: 1-800-479-0190