



**AmericanBiltrite**  
Flooring



SONATA | ELEMENTS

LUXURY VINYL TILE

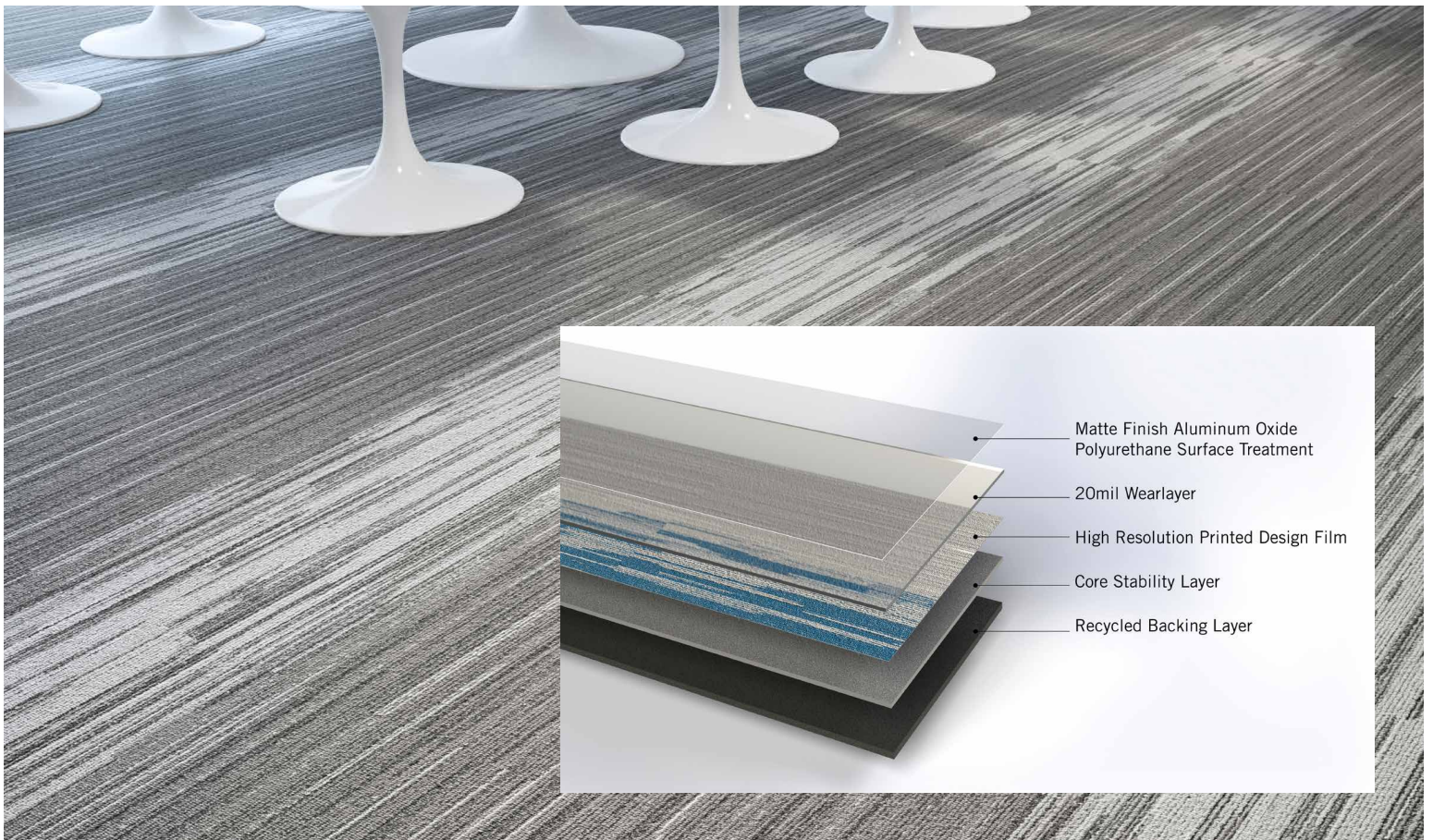
Sonata  
ELEMENTS

# Sonata

## ELEMENTS

The design sophistication and flexibility of carpet in a luxury vinyl tile.

Sonata Elements is an 18" x 36" Luxury Vinyl Tile with a 20-mil wear layer that combines the hygienic benefits of luxury vinyl tile with a striated textile design inspired by modular carpet tiles.



**SEL-2B** Medium Grey | Light Grey

# COLORWAYS

---



**SEL-1A** Light Grey



**SEL-1B** Light Grey | Medium Grey



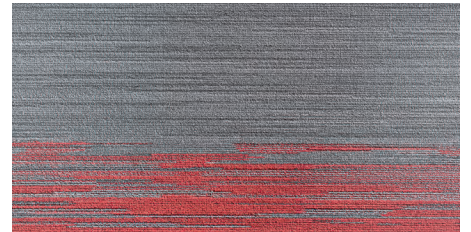
**SEL-1C** Light Grey | Blue



**SEL-2A** Medium Grey



**SEL-2B** Medium Grey | Light Grey



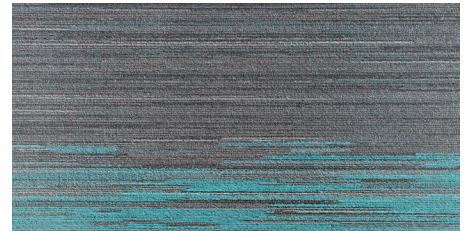
**SEL-2C** Medium Grey | Red



**SEL-3A** Dark Grey



**SEL-3B** Dark Grey | Light Grey



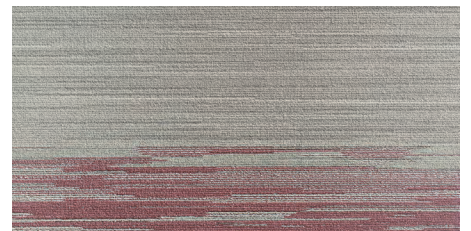
**SEL-3C** Dark Grey | Turquoise



**SEL-4A** Beige



**SEL-4B** Beige | Brown



**SEL-4C** Beige | Burgundy



**SEL-5A** Cocoa



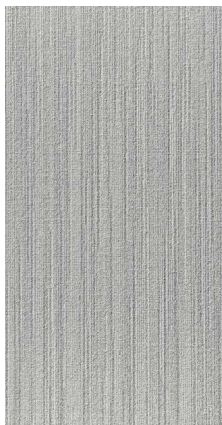
**SEL-5B** Cocoa | Greige



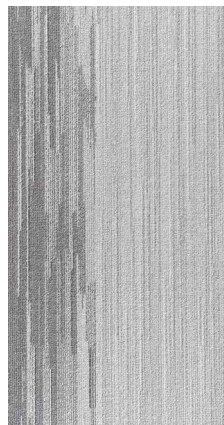
**SEL-5C** Cocoa | Green



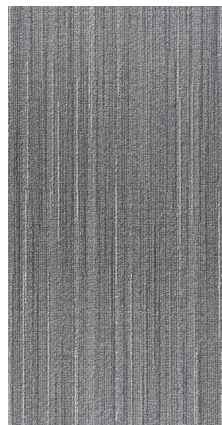
**SEL-1C**  
Light Grey | Blue



**SEL-1A**  
Light Grey

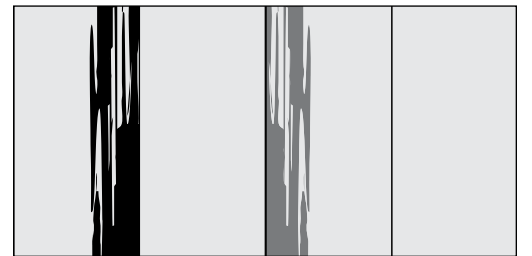


**SEL-1B**  
Light Grey | Medium Grey

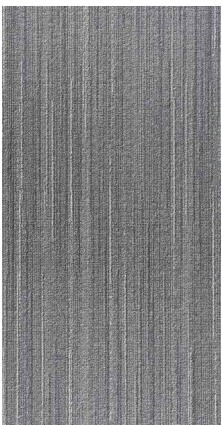


**SEL-2A**  
Medium Grey

Flooring pattern



**DOUBLE/SINGLE**

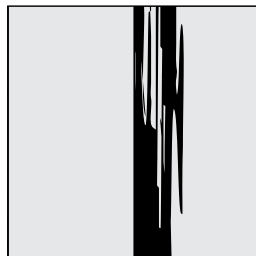


**SEL-2A**  
Medium Grey

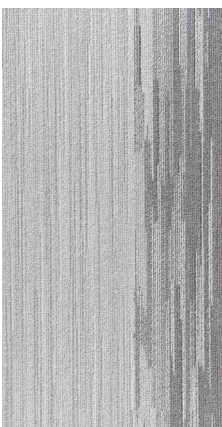


**SEL-2C**  
Medium Grey | Red

Flooring pattern



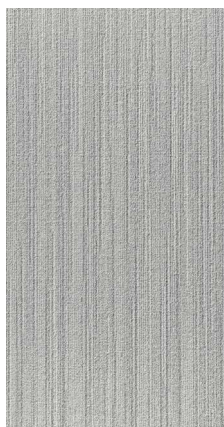
**SINGLE STRIPE**



**SEL-1B**  
Light Grey | Medium Grey

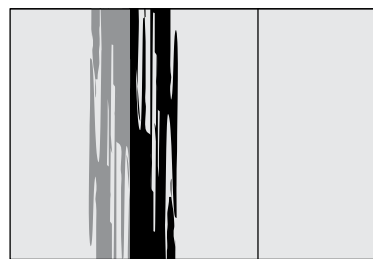


**SEL-1C**  
Light Grey | Blue



**SEL-1A**  
Light Grey

Flooring pattern



**MIRROR STRIPE**



**SEL-5C**  
Cocoa | Green

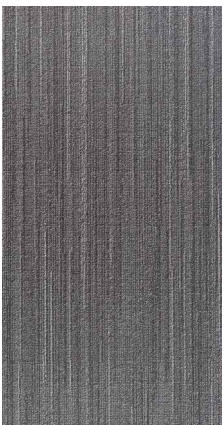


**SEL-5A**  
Cocoa

Flooring pattern



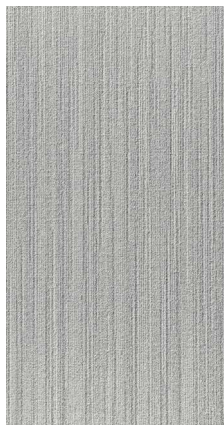
**INVERSED STAGGER**



**SEL-3A**  
Dark Grey



**SEL-3C**  
Dark Grey | Turquoise



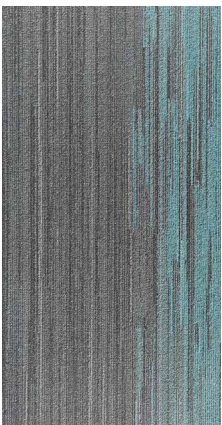
**SEL-1A**  
Light Grey

Flooring pattern



**SINGLE CORRIDOR**



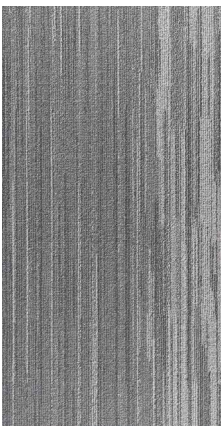


**SEL-3C**  
Dark Grey | Turquoise

Flooring pattern



**FLIPPED MIRROR**



**SEL-2B**  
Medium Grey | Light Grey

Flooring pattern



**MIRROR**

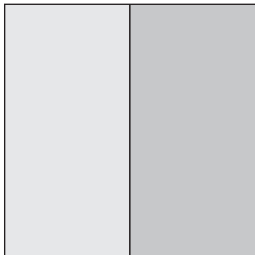


**SEL-4A**  
Beige



**SEL-5A**  
Cocoa

Flooring pattern



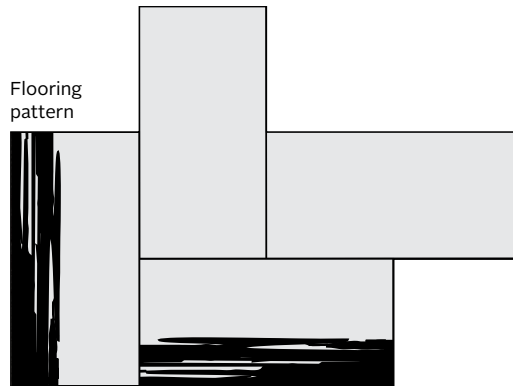
**INTERMITTENT CHECKER**



**SEL-4C**  
Beige | Burgundy



**SEL-4A**  
Beige

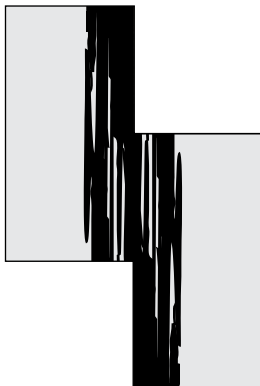


**ZIG-ZAG**



**SEL-4B**  
Beige | Brown

Flooring pattern



**BRICK STYLE**

# FLOORING PATTERNS

---



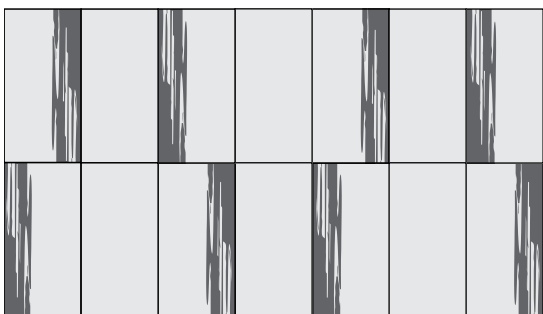
**DOUBLE/SINGLE** PAGE 4



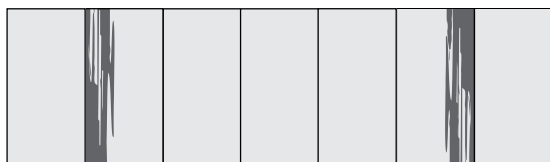
**SINGLE STRIPE** PAGE 5



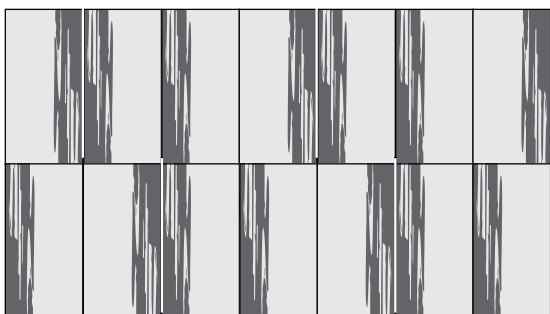
**MIRROR STRIPE** PAGE 6



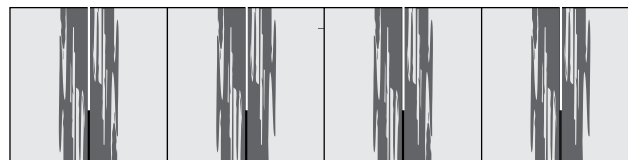
**INVERSED STAGGER** PAGE 7



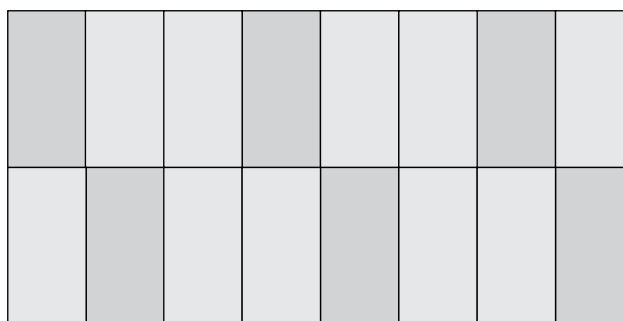
**SINGLE CORRIDOR** PAGE 8



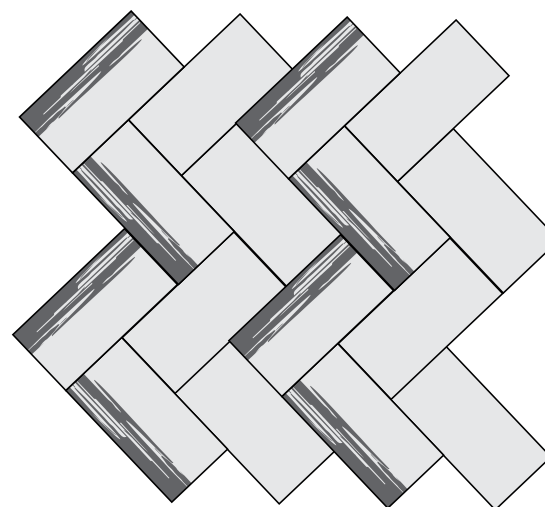
**FLIPPED MIRROR** PAGE 9



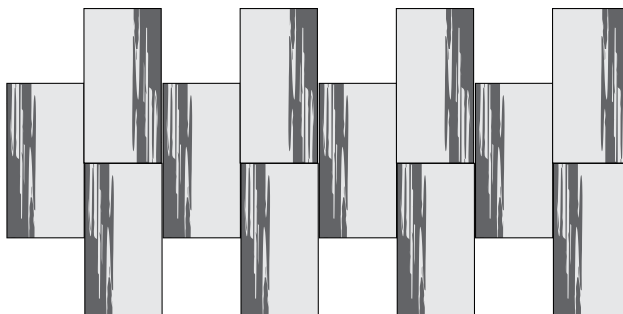
**MIRROR** PAGE 10



**INTERMITTENT CHECKER** PAGE 11



**ZIG-ZAG** PAGE 12

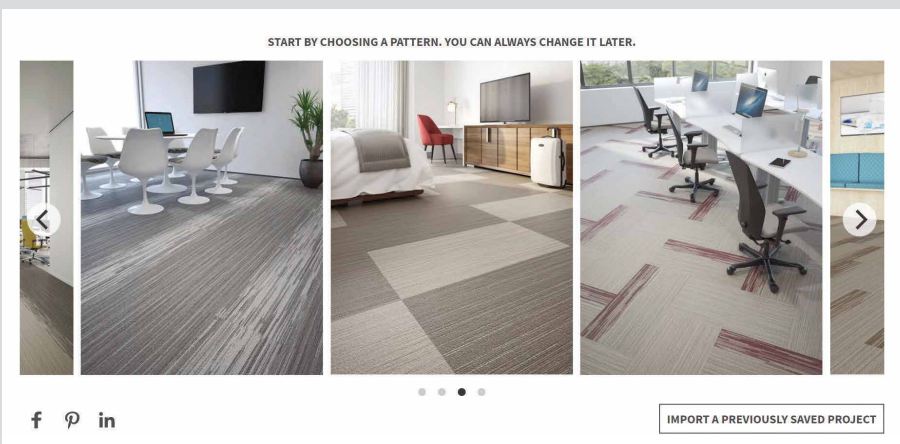


**BRICK STYLE** PAGE 13

# FLOOR CREATOR

## Discover the Sonata Elements LVT Floor Creator App and create unlimited unique flooring designs.

Visit [sonata.american-biltrite.com](http://sonata.american-biltrite.com) to access the app.



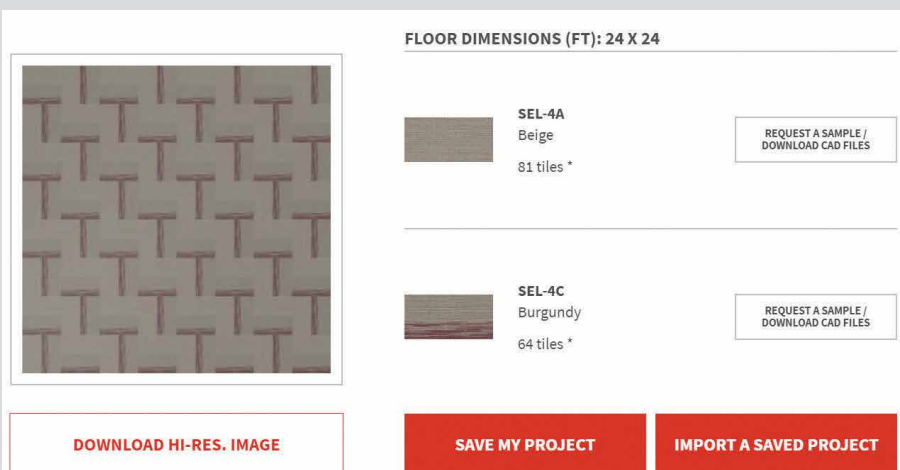
Start by choosing one of the ten flooring sample patterns.

**You can easily modify the patterns to create your own unique design.**



Specify a floor size according to your project requirements. The tiles can be installed at different angles and even flipped 180.

Pick from fifteen tile colors— five cool and warm neutral base colors supported by ten tone-on-tone accent tiles.



The app will calculate the quantities per color required for your project.

You can easily save and re-upload the project into the app for later use. The app also allows you to download CAD files and request samples.



# American Biltrite Flooring

## SONATA® | ELEMENTS™

### TECHNICAL SPECIFICATIONS

<b>Gauge</b>	<b>0.098"</b>	<b>2.50 mm</b>
<b>Size</b>	<b>18" x 36"</b>	<b>457 mm x 915 mm</b>
<b>Wear Layer Thickness</b>	<b>0.020"</b>	<b>0.5 mm</b>
<b>ASTM F 1700</b>	Product Classification: Solid Vinyl Floor Tile	Class III, Type A or B
<b>ASTM D 2047</b>	Static Coefficient of Friction (leather)	≥ 0.5
<b>ASTM D 3389</b>	Abrasion Resistance (H-22, 500 g @ 1,000 cycles)	PASS
<b>ASTM E 648</b>	Critical Radiant Flux CRF (W/cm <sup>2</sup> )	≥ 0.45
<b>ASTM E 662</b>	Smoke Density	≤ 450
<b>ASTM F 925</b>	Chemical Resistance	Exceeds
<b>ASTM F 970</b>	Static Load (modified at 2,500 psi)	≤ 0.005"
<b>ASTM F 1514</b>	Heat Stability	ΔE ≤ 8.0
<b>ASTM F 1515</b>	Light Stability	ΔE ≤ 8.0
<b>ASTM F 1914</b>	Indentation	Residual < 8%
<b>ASTM F 2055</b>	Squareness	0.010" maximum
<b>Indoor Air Quality (IAQ)</b>	FloorScore Certified by SCS Certification	
<b>Volatile Organic Compounds (VOC's)</b>	Registration Number SCS-FS-03325	
<b>Maintenance</b>	Very low	
<b>PU (Polyurethane) surface treatment containing Aluminum Oxide</b>	Facilitates maintenance	
<b>Adhesives</b>	PS-30	Regular traffic
	AD-535	Heavy traffic/rolling loads
<b>Limited Wear Warranty</b>	10 years for commercial installations 20 years for residential installations	

Please note that technical Website documents prevail.

® / SONATA is a registered trademark of American Biltrite TM / SONATA ELEMENTS is an American Biltrite trademark name

[american-biltrite.com](http://american-biltrite.com)



American Biltrite, 200 Bank Street, Sherbrooke, Quebec, Canada J1H 4K3

To order samples: [flooring@american-biltrite.com](mailto:flooring@american-biltrite.com) | 1.800.437.8743 | Fax 1.800.810.5731 | Technical Services: 1.800.479.0190

FOL-E0-ELE