



AmericanBiltrite
Flooring



SONATA | WOOD & STONE

LUXURY VINYL TILES & PLANKS

Sonata

Sonata

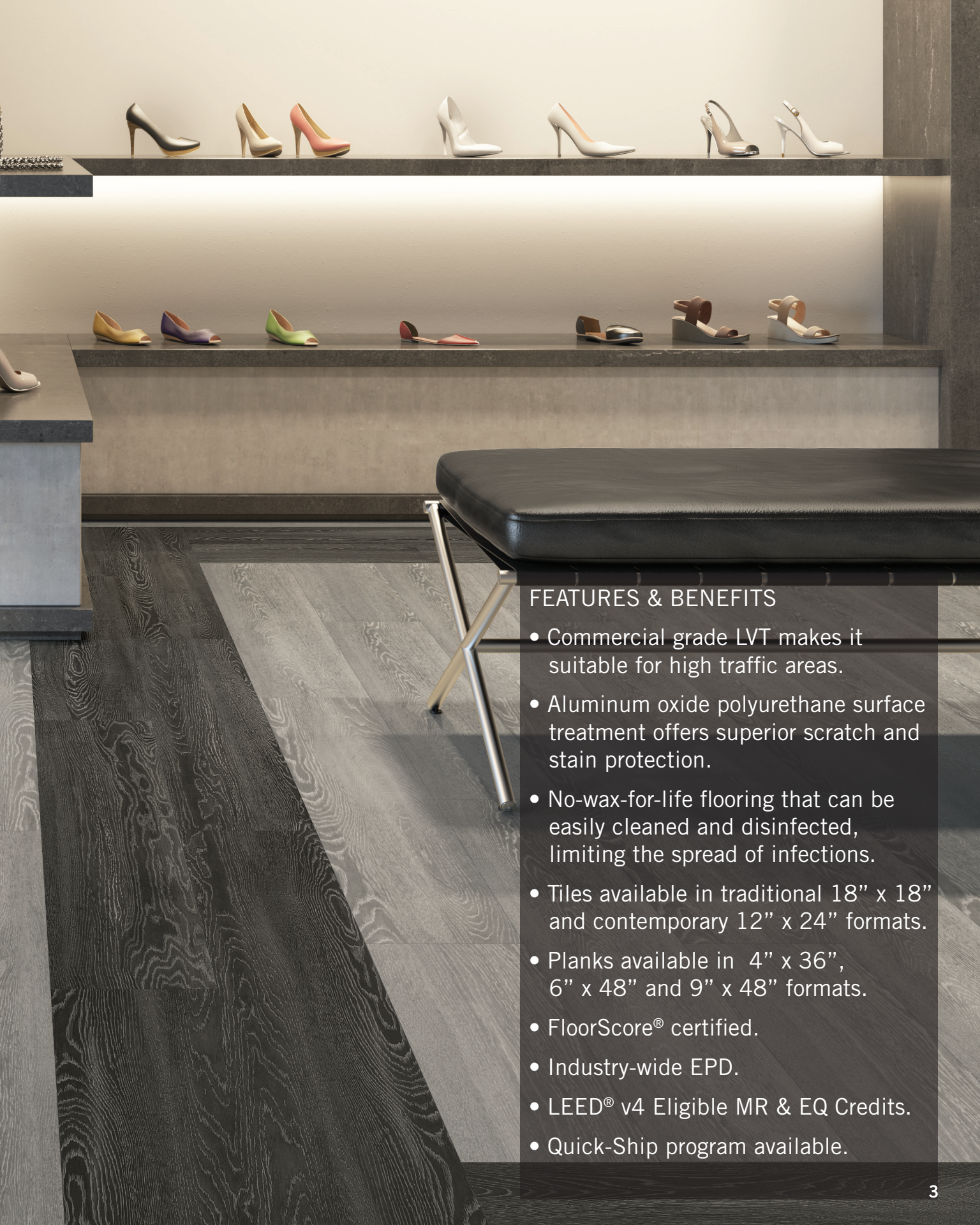
WOOD & STONE

Sonata® will have everyone singing the praises with its line of 2.5 mm luxury vinyl tiles and planks with a 20 mil wear layer. Developed for medium to heavy commercial use, the collection comes in a timeless and elegant line of wood planks and stone designs.

The line also features an aluminum oxide polyurethane surface treatment for superior scratch and stain protection. With Sonata, architects and designers now have everything they need to create beautiful, affordable, long-lasting flooring that's music to everyone's ears.

CEO-01 Light Grey | CEO-03 Dark Grey

Plank size: 9" x 48"



FEATURES & BENEFITS

- Commercial grade LVT makes it suitable for high traffic areas.
- Aluminum oxide polyurethane surface treatment offers superior scratch and stain protection.
- No-wax-for-life flooring that can be easily cleaned and disinfected, limiting the spread of infections.
- Tiles available in traditional 18" x 18" and contemporary 12" x 24" formats.
- Planks available in 4" x 36", 6" x 48" and 9" x 48" formats.
- FloorScore® certified.
- Industry-wide EPD.
- LEED® v4 Eligible MR & EQ Credits.
- Quick-Ship program available.

EUROPEAN WALNUT

Plank size: 6" x 48"



CEW-03 Light Brown



CEW-01 Taupe



CEW-02 Grey



CEW-04 Dark Brown



CBZ-01 Light Beige



CBZ-02 Dark Brown



CCM-01 Natural



CCM-02 Reddish Brown



CCM-03 Brown

S A P E L E M A H O G A N Y

Plank size: 6" x 48"



CSM-01 Charcoal



CSM-02 Dark Brown



CCK-02 Golden Brown



CCK-01 Natural



CCK-03 Dark Brown

NORDIC CHERRY

Plank size: 4" x 36"



CNC-01 Beige



CNC-02 Light Grey



CNC-03 Auburn

TIMELESS TRAVERTINE

Tile size: 18" x 18"



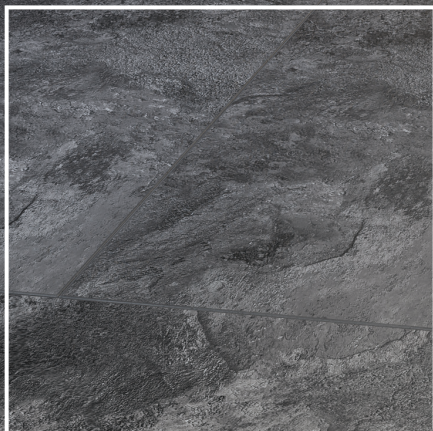
CTT-03 Beige



CTT-02 Cream

RUSTIC SLATE

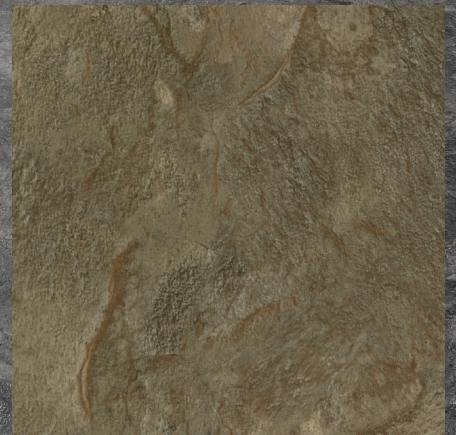
Tile size: 18" x 18"



CRS-06 Dark Grey



CRS-01 Light Grey



CRS-07 Warm Grey

METRO STRANDS

Tile sizes: 18" x 18"
12" x 24"



CMS-01 Taupe

CMS-02 Dark Brown

COSMO STONEWOOD

Tile sizes: 18" x 18"
12" x 24"



CCS-02 Grey

CCS-06 Bronze



CUS-04 Graphite



American Biltrite Flooring

SONATA® | WOOD & STONE

TECHNICAL SPECIFICATIONS

Gauge		0.098"	2.50 mm
Size		18" x 18"	457 mm x 457 mm
		12" x 24"	305 mm x 610 mm
		4" x 36"	102 mm x 915 mm
		6" x 48"	152 mm x 1219 mm
		9" x 48"	229 mm x 1219 mm
Product Classification			
ASTM F 1700	Solid Vinyl Floor Tile		Class III, Type A or B
Wear Layer Thickness		0.020"	0.5 mm
ASTM D 2047	Static Coefficient of Friction (leather)		≥ 0.5
ASTM D 3389	Abrasion Resistance (H-22, 500 g @ 1,000 cycles)		PASS
ASTM E 648	Critical Radiant Flux CRF (W/cm ²)		≥ 0.45
ASTM E 662	Smoke Density		≤ 450
ASTM F 925	Chemical Resistance		Exceeds
ASTM F 970	Static Load (modified at 2,500 psi)		≤ 0.005"
ASTM F 1514	Heat Stability		ΔE ≤ 8.0
ASTM F 1515	Light Stability		ΔE ≤ 8.0
ASTM F 1914	Indentation		Residual < 8%
ASTM F 2055	Squareness		0.010" maximum
Indoor Air Quality (IAQ)		FloorScore Certified by SCS Certification	
Volatile Organic Compounds (VOC's)		Registration Number SCS-FS-03325	
Maintenance		No wax for life, easy maintenance	
PU (Polyurethane) surface treatment containing Aluminum Oxide		Facilitates maintenance	
Adhesives	PS-30	Regular traffic	
	AD-535	Heavy traffic/rolling loads	
Limited Wear Warranty		10 years for commercial installations 20 years for residential installations	

Please note that technical website documents prevail.

® / SONATA is a registered trademark of American Biltrite.

american-biltrite.com



American Biltrite, 200 Bank Street, Sherbrooke, Quebec, Canada J1H 4K3
To order samples: flooring@american-biltrite.com | 1.800.437.8743 | Fax 1.800.810.5731 | Technical Services: 1.800.479.0190



AmericanBilrite
Flooring

® / SONATA is a registered trademark of American Bilrite.

american-bilrite.com

American Bilrite, 200 Bank Street, Sherbrooke, Quebec, Canada J1H 4K3
To order samples: flooring@american-bilrite.com | 1.800.437.8743 | Fax 1.800.810.5731 | Technical Services: 1.800.479.0190

Printed in Canada BRO-E0-SON Issued: 12/2020