



Acoustic vinyl

**sarlon**<sup>®</sup> 15 dB | 19 dB  Fully adhered flooring

**modul'up**<sup>®</sup> 19 dB | compact  **FASTFIT**<sup>®</sup>  
Rapid, reusable flooring



creating better environments

**Forbo**

FLOORING SYSTEMS

In this sample book you will find the full range of items that are available in no less than 4 different high performance constructions. The diversity in constructions all come with their own benefits and advantages, all available in this wide range of designs and colours as shown in this book.

### XTREM PUR

- EXTREMELY HIGH-PERFORMANCE LACQUER PROTECTION WITH
- Best possible resistance against stains for easy maintenance
  - Durable resistance against scuffs and scratches
  - Easy to clean, hygienic surface, which prevents the growth of bacteria
  - Natural matt appearance enhances the design and R10 enhanced slip resistance



### sarlon® 19 dB

- WELL PROVEN ACOUSTIC HIGH TRAFFIC PRODUCT
- Superior acoustic sound reduction of 19 dB
  - Best residual indentation for a 19 dB acoustic product
  - High performance characteristics on all relevant features



### sarlon® 15 dB

- THE OPTIMAL COMBINATION OF ACOUSTIC AND HIGH LOAD REQUIREMENTS
- Low residual indentation, suitable for heavy loads
  - 15 dB acoustic performance for additional comfort
  - A unique product proposition in the market



Both constructions have very low emissions, are phthalate free and made with green energy and meet all relevant environmental and quality standards.

### modul'up® 19 dB

- THE ADHESIVE FREE ACOUSTIC SHEET SOLUTION
- Rapid installation with minimal downtime and disturbance, and can be walked on immediately after installation
  - Long term benefit of very quick removal, replacement and end of life recycling, saving money over time
  - No adhesive needed, reducing disruption and avoiding lingering adhesive odours
  - As part of Forbo's Fast Fit collection, Modul'up can reduce downtime by over 50% compared to standard, glued down products



### modul'up® compact

- THE ADHESIVE FREE COMPACT SHEET SOLUTION
- Speed of installation and renewal reduces downtime and is immediately ready to use after installation
  - Compact and strong solution for heavy traffic and intense use
  - Possibility to use over existing flooring, no need to remove on many occasions



Modul'up products are introduced as an output of our circular economy design concept and do not require any adhesive for installation.

All four products have very low emissions, are phthalate free, are made with green electricity and meet all relevant environmental and quality standards.

## sarlon® modul'up®

### The Acoustic collection

The known high quality acoustic vinyl of Sarlon and the market leading concept of Modul'up are combined into one dedicated collection. It offers the highest diversity, in meeting your specific project requirements, in today's environment.

The diversity in design in this range with over 90 designs and colour options gives you enough choice for any dynamic in your building. The constellation of the design concept is built in such a way that next to offering very strong individual solutions on the different types of design there are also strong links created to connect the whole concept.

Each item in this sample book is available in all four constructions; **Sarlon 19 dB**, **Sarlon 15 dB**, **Modul'up 19 dB** and **Modul'up Compact**. Underneath each sample, you will find a single colourway number, which can then be combined with one of the construction codes listed below:

**Sarlon 19 dB**  **T4319**

**Sarlon 15 dB**  **T4315**

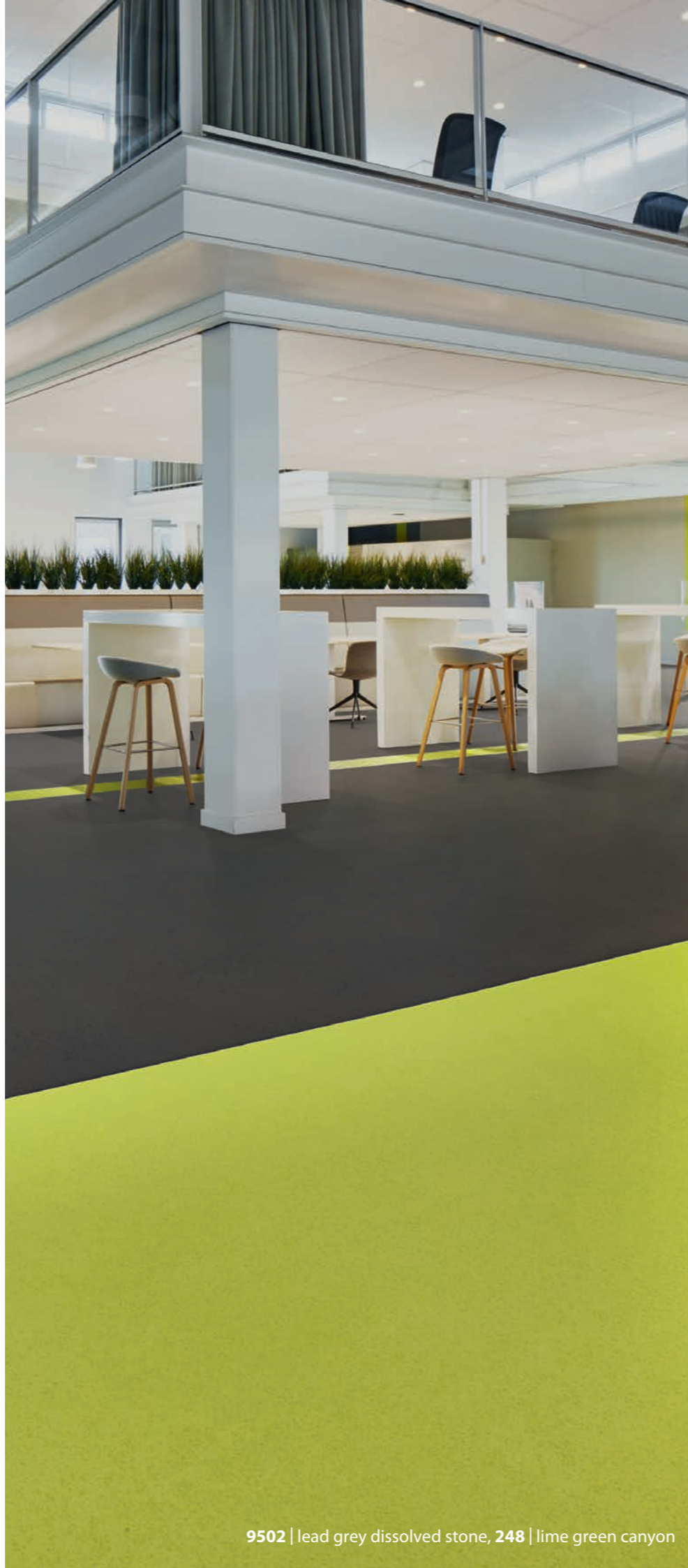
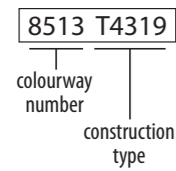
**Modul'up 19 dB**  
**FASTFIT**  
*Rapid, reusable flooring*  **UP4319**

**Modul'up Compact**  
**FASTFIT**  
*Rapid, reusable flooring*  **UP43C**

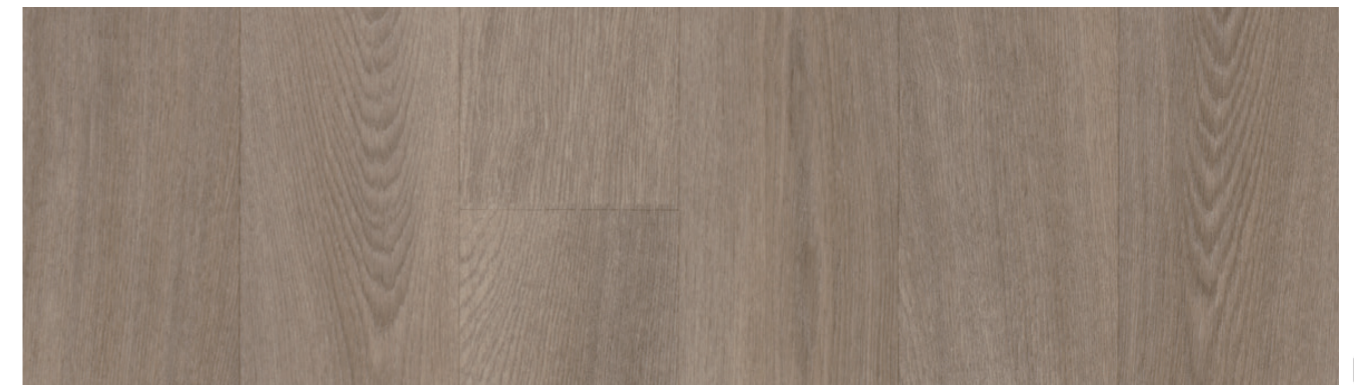
**Example:**

If you would like to order the colourway 'blond chill oak' in the Sarlon 19 dB construction, you would combine the colourway number '8513' and the construction code 'T4319' to arrive at the desired product code.

This is how you would specify this example order:

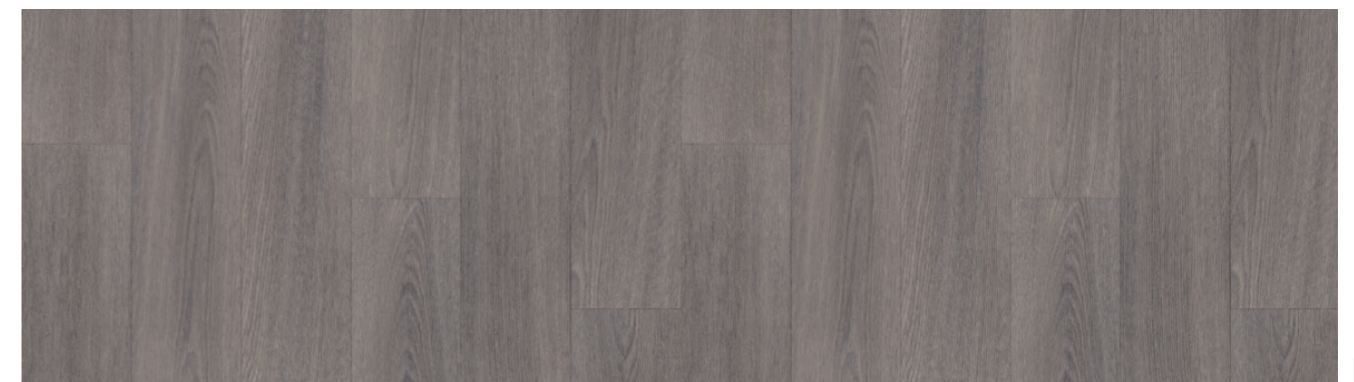


**8412** | grey silver oak



**8420** | clay oak xl

LRV 23



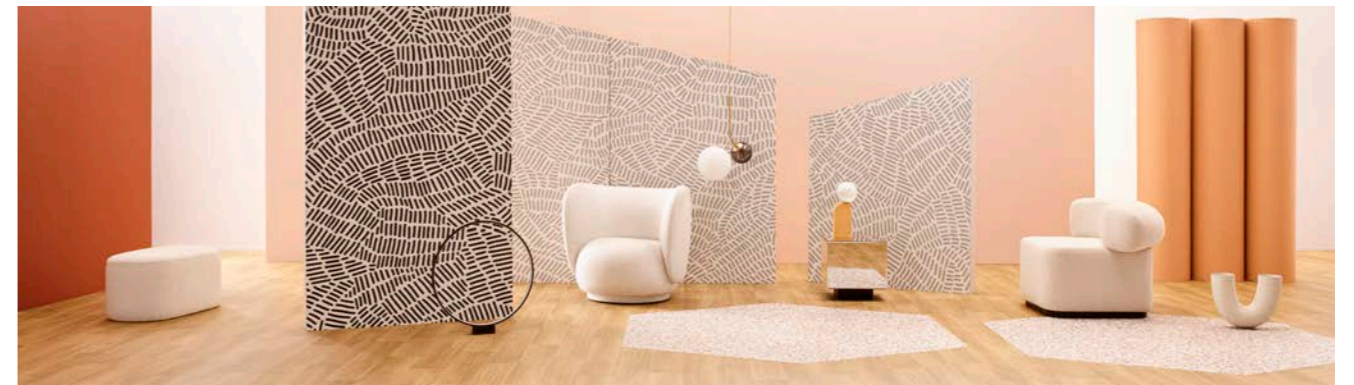
**8422** | carbon oak xl

LRV 16



8483 | scandinavian oak

LRV 32



8513 | blond chill oak, 9406 | coral terrazzo



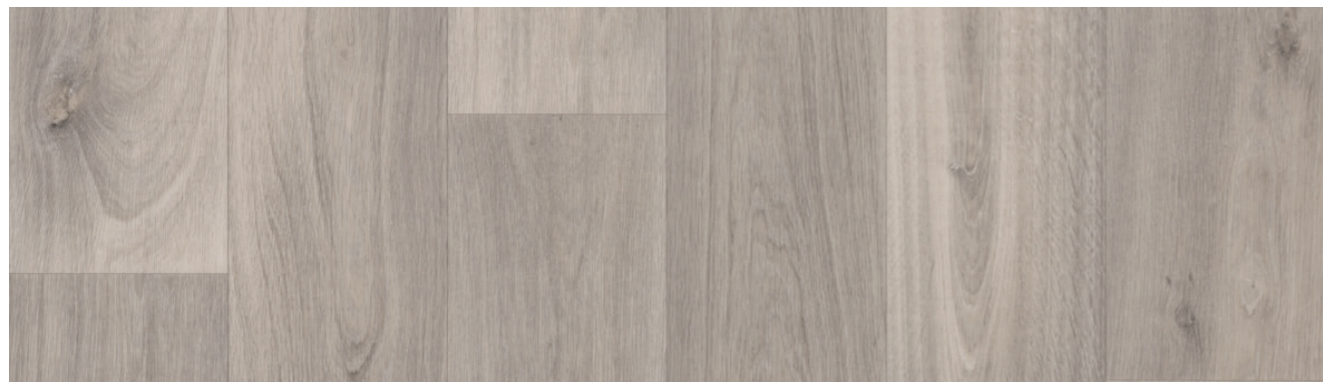
8413 | natural oak

LRV 32



8513 | blond chill oak

LRV 29



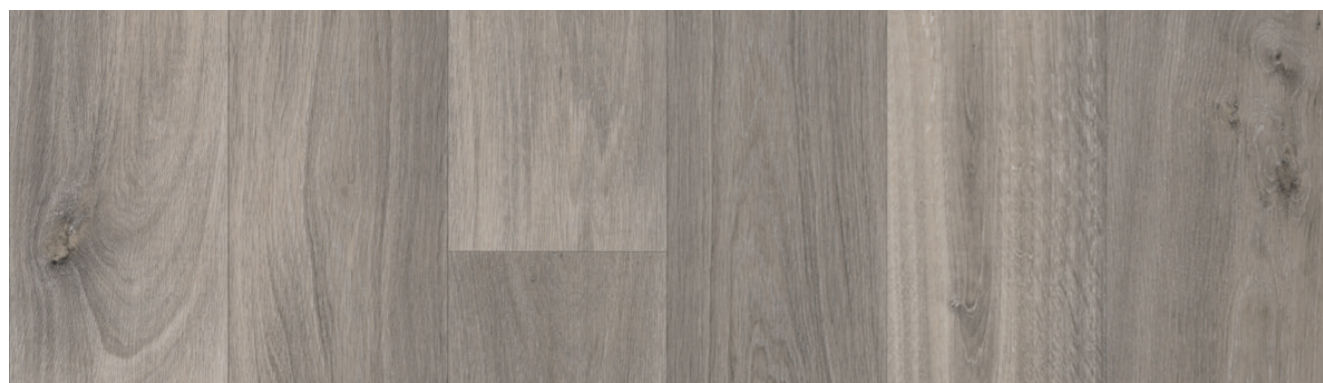
8421 | polar oak

LRV 39



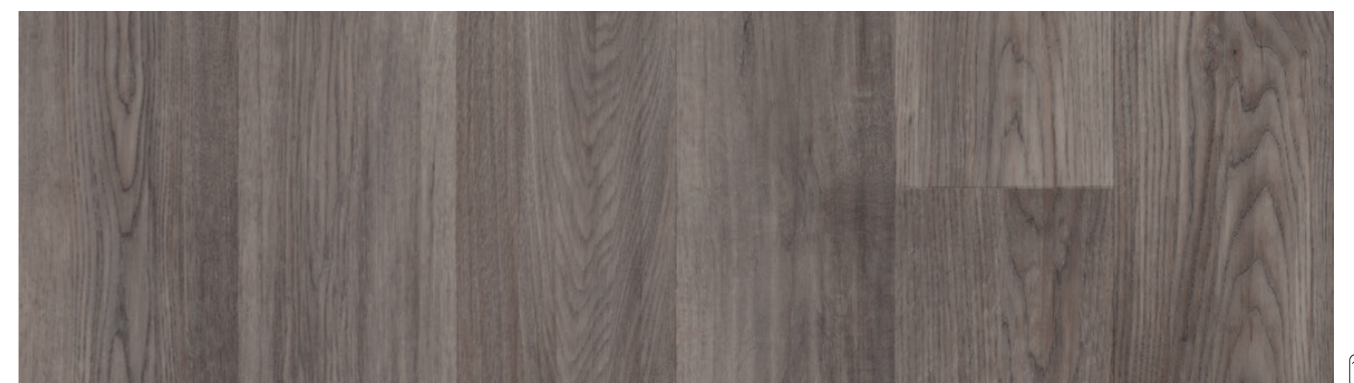
8514 | pure chill oak

LRV 27



8412 | grey silver oak

LRV 26

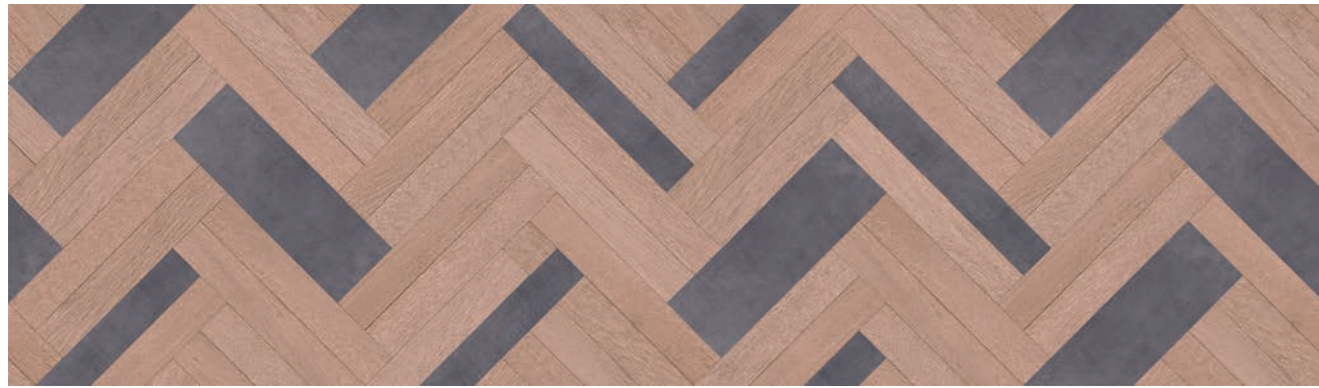


8512 | smoked chill oak

LRV 25



2 m



9201 | light hybrid wood concrete

LRV 22



311 | light grey zebrano

LRV 44



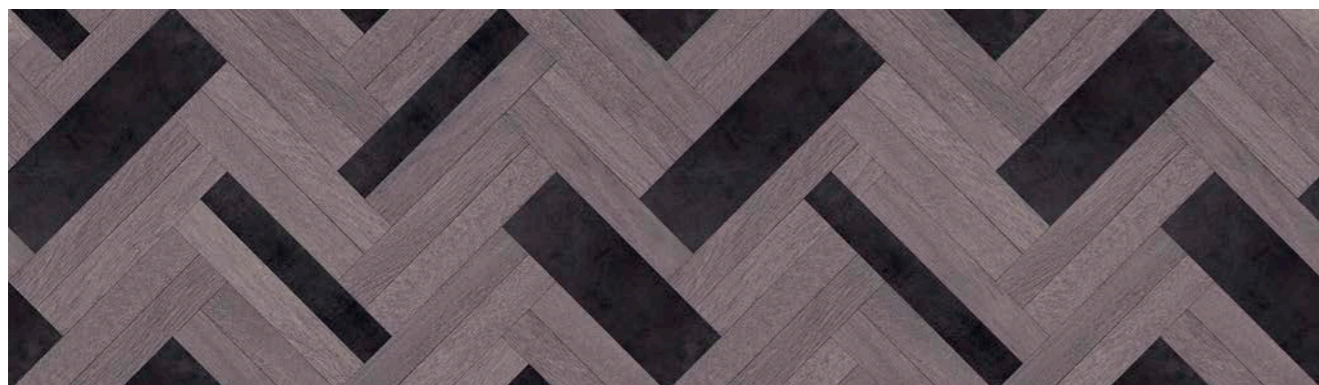
313 | sand zebrano

LRV 38



9209 | dark hybrid wood concrete

2 m



9209 | dark hybrid wood concrete

LRV 12



121 | grey linea

LRV 36



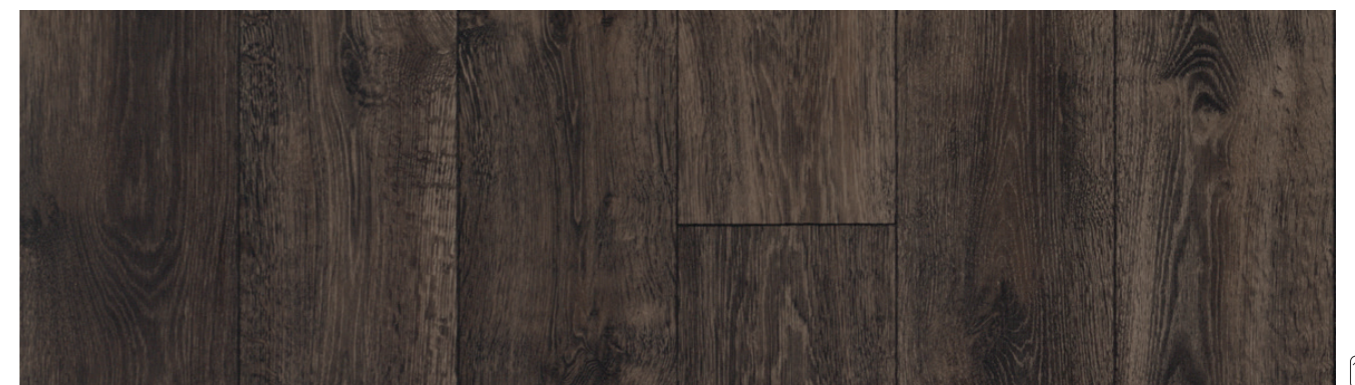
132 | charcoal linea

LRV 17



8224 | brown rustic oak

LRV 11



8229 | burned charcoal rustic oak

LRV 9

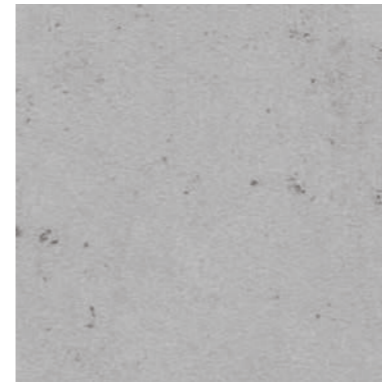




302 | light grey nairobi LRV 30



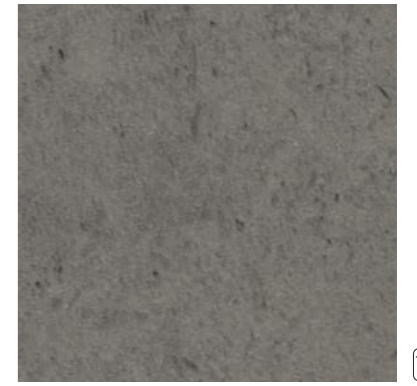
312 | anthracite nairobi LRV 22



651 | silver slabstone LRV 44



659 | mercury slabstone LRV 28



572 | medium grey cement LRV 25



303 | sand nairobi LRV 26



304 | taupe nairobi LRV 13



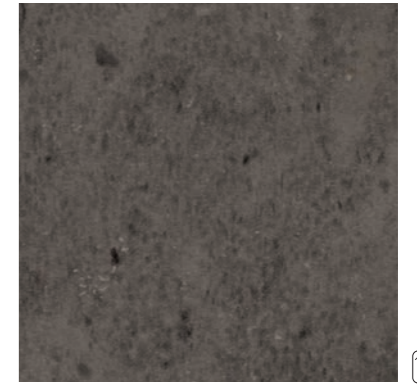
307 | pastel blue nairobi LRV 40



573 | clay cement LRV 41



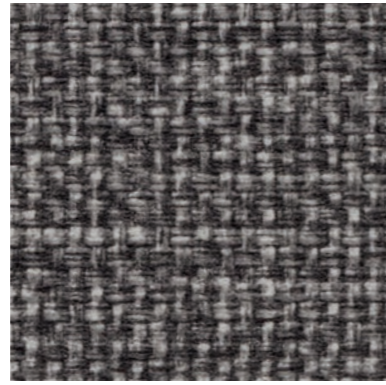
570 | chalk cement LRV 49



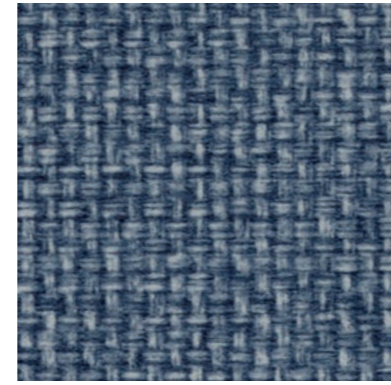
579 | slate cement LRV 15



333 | warm sand canvas LRV 28



339 | brown canvas LRV 13



337 | indigo blue canvas LRV 15



713 | peanut concrete LRV 28



651 | silver slabstone, 9402 | natural terrazzo



332 | light grey canvas LRV 20



342 | natural grey canvas LRV 26



771 | silver concrete LRV 28



761 | steel concrete LRV 16



742 | pewter concrete LRV 12





**9501** | neutral grey dissolved stone, **4806** | soft peach stardust, **886** | red uni



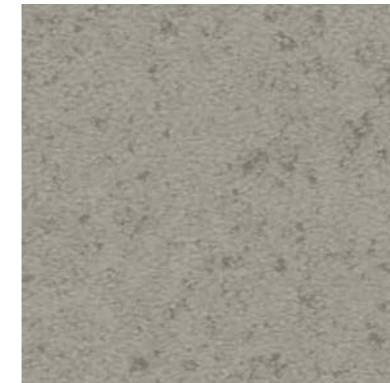
**200** | ivory canyon

LRV 50



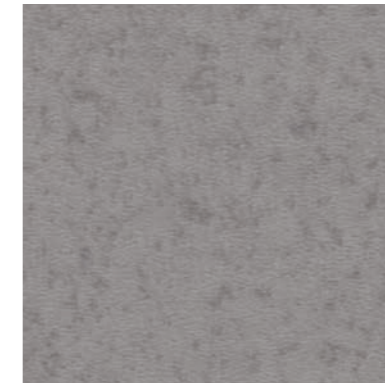
**223** | sand canyon

LRV 53



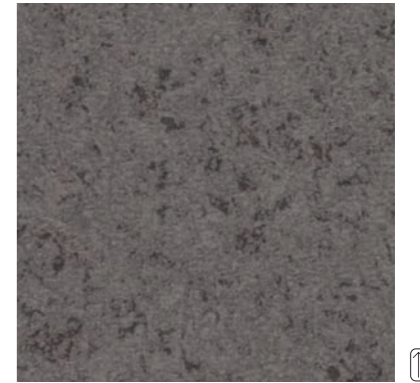
**211** | light grey canyon

LRV 34



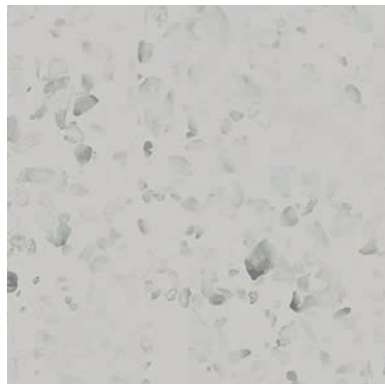
**212** | grey canyon

LRV 27



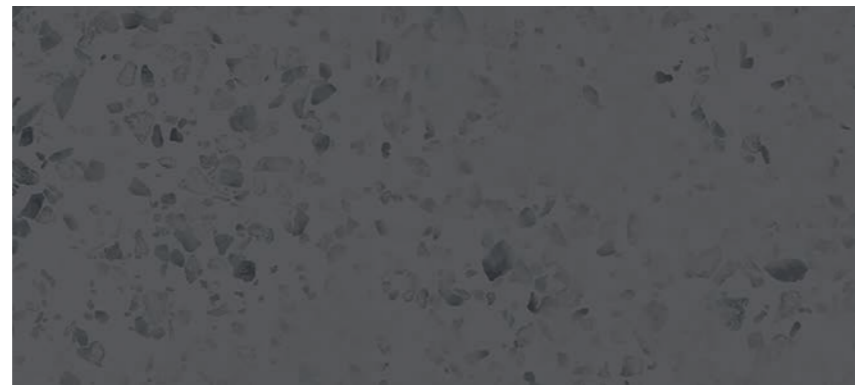
**209** | medium grey canyon

LRV 19



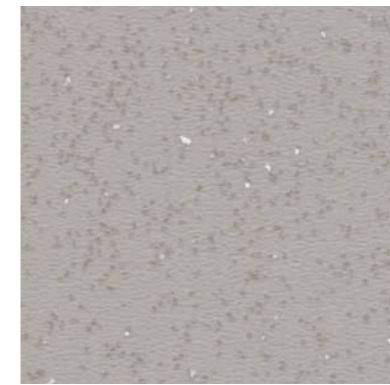
**9501** | neutral grey dissolved stone

LRV 45



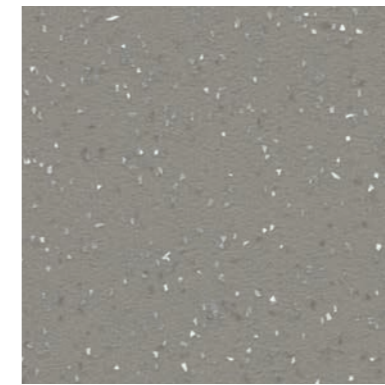
**9502** | lead grey dissolved stone

LRV 13



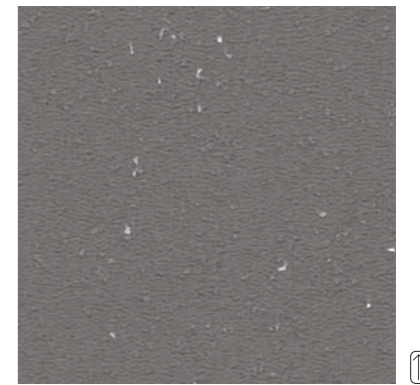
**3801** | pearl cristal

LRV 41



**3812** | light grey cristal

LRV 29



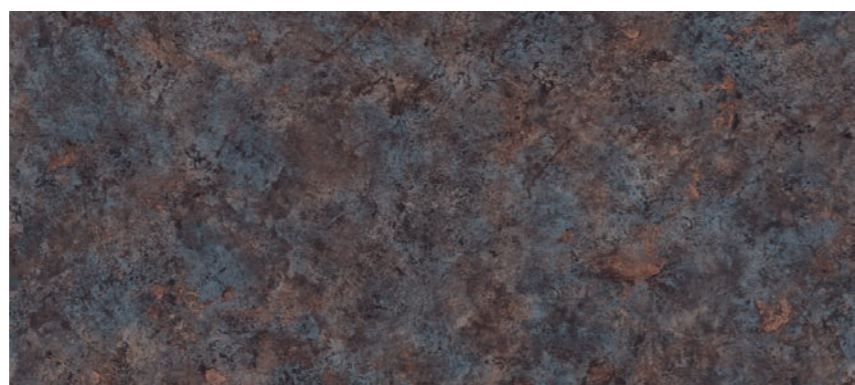
**3819** | medium grey cristal

LRV 18



**904** | graphite stromboli

LRV 12



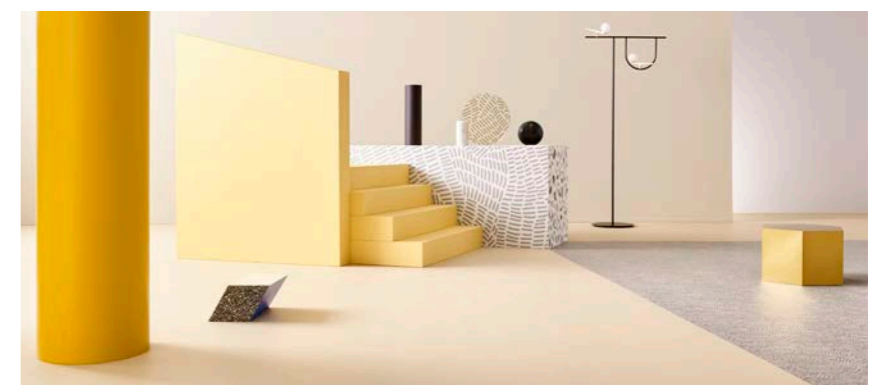
**902** | bronzite stromboli

LRV 11



**3811** | grey beige cristal

LRV 47



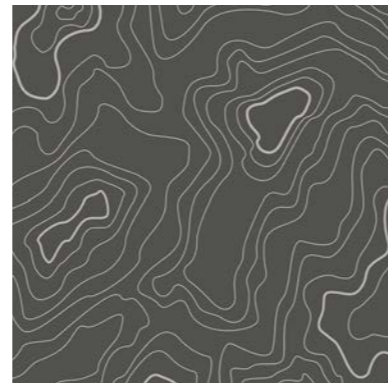
**223** | sand canyon, **409** | black & white doodle



863 | beige grey uni LRV 39



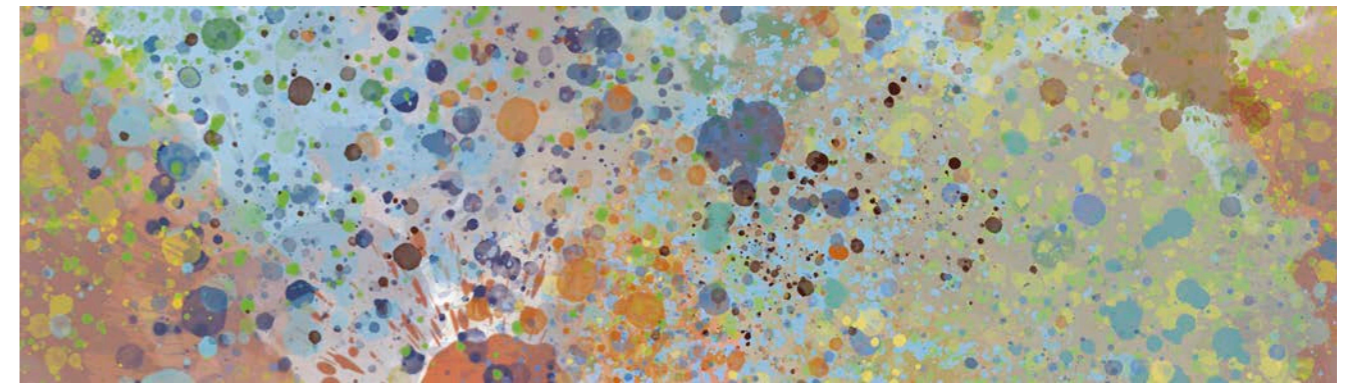
922 | steel grey topography LRV 29



919 | grey topography LRV 13



← 2 m →



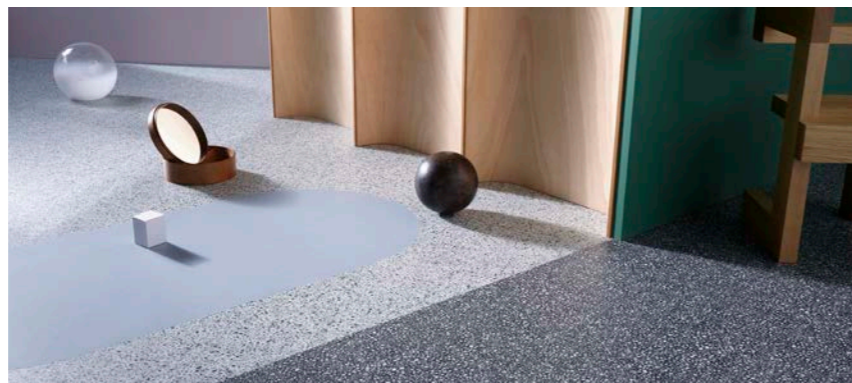
9100 | multi color splash



LRV 31



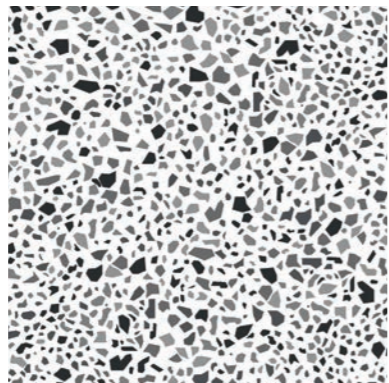
861 | light grey uni LRV 41



9602 | grey graphito, 9609 | black graphito, 307 | pastel blue nairobi



862 | stone grey uni LRV 27



9602 | grey graphito LRV 44



402 | grey & white doodle LRV 48



9100 | multi color splash

← 2 m →



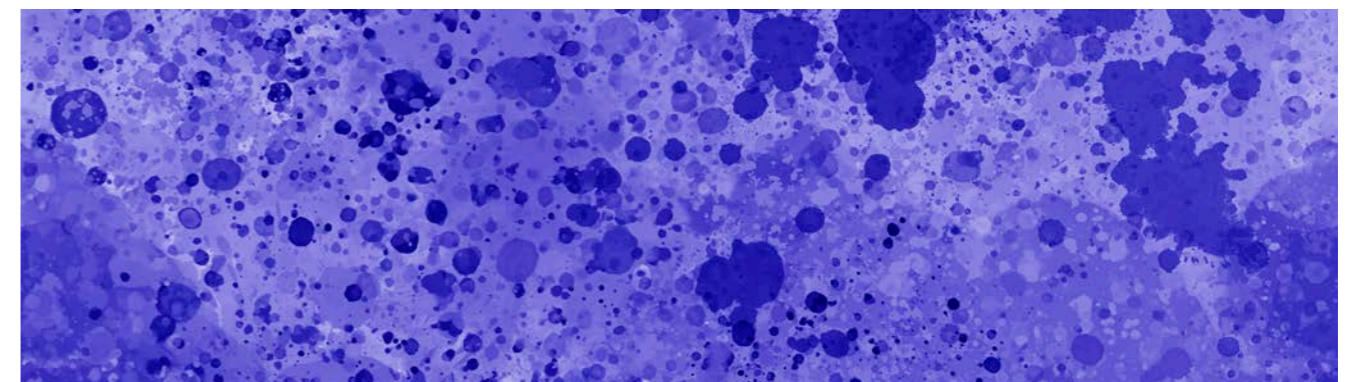
869 | charcoal uni LRV 13



9609 | black graphito LRV 18



409 | black & white doodle LRV 33



9107 | indigo color splash

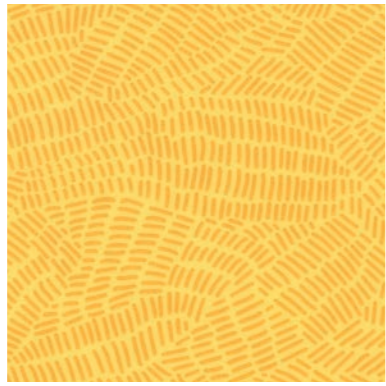


LRV 14

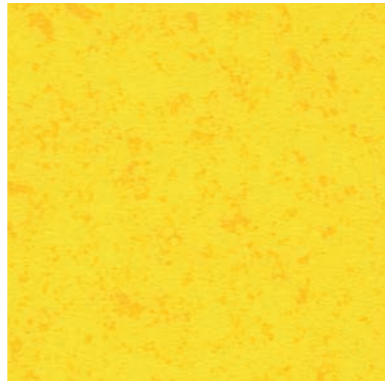




865 | yellow uni LRV 61



405 | yellow doodle LRV 55



235 | lemon canyon LRV 60



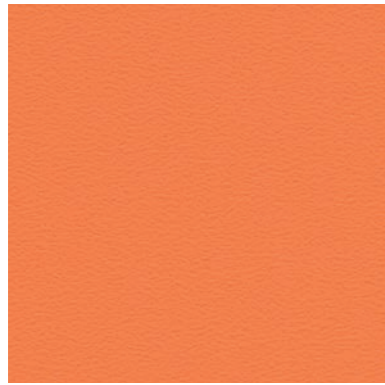
868 | lime uni LRV 48



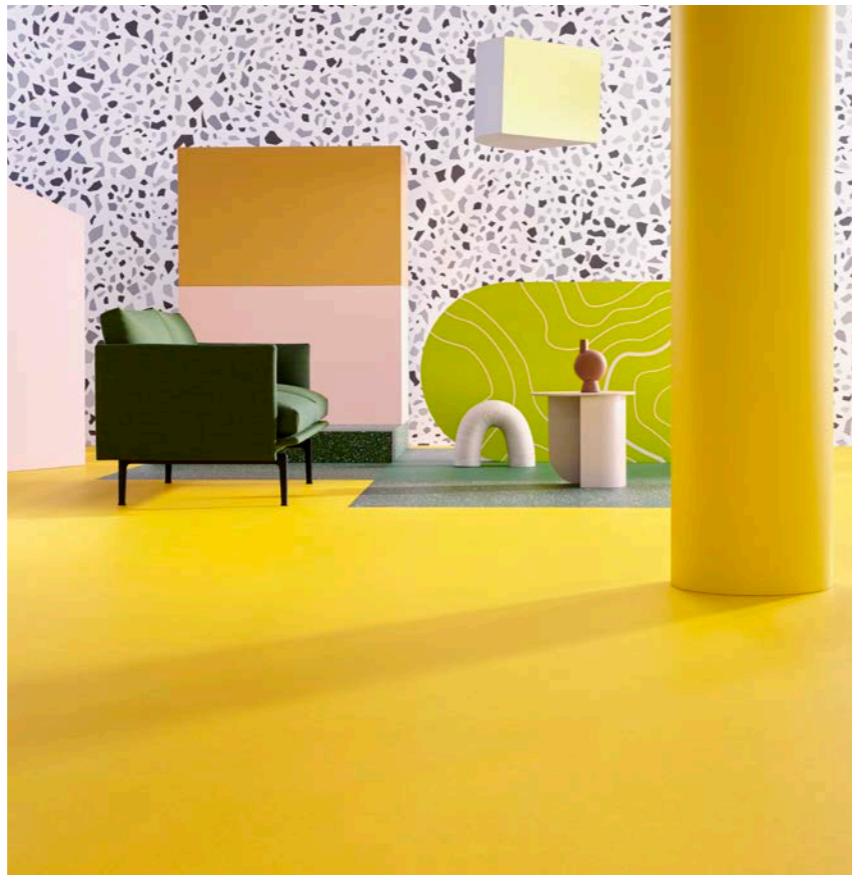
928 | lime topography LRV 54



248 | lime green canyon LRV 49



866 | mandarine uni LRV 33



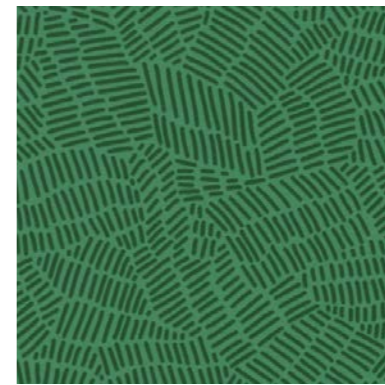
9608 | green graphito, 878 | dark green uni, 235 | lemon canyon



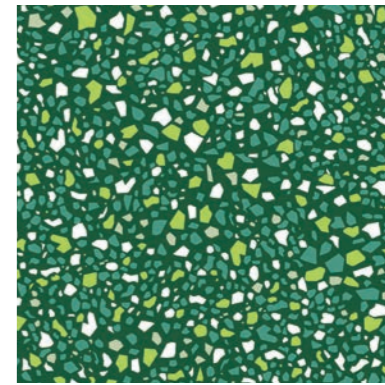
876 | orange uni LRV 22



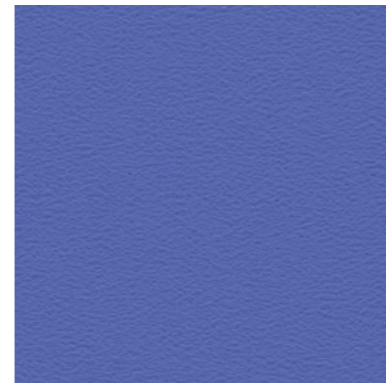
878 | dark green uni LRV 14



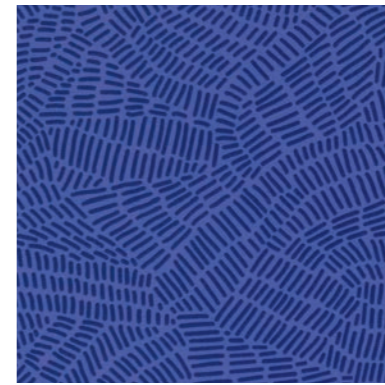
408 | dark green doodle LRV 13



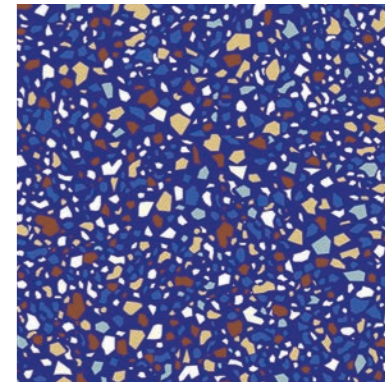
9608 | green graphito LRV 17



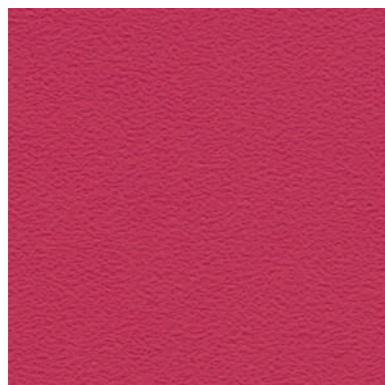
867 | blue uni LRV 17



407 | blue doodle LRV 10



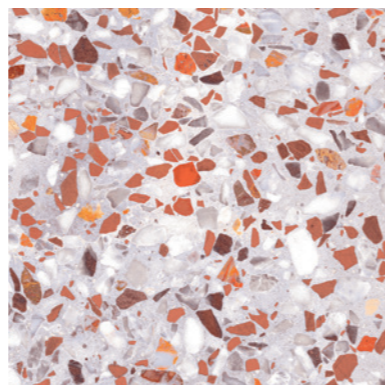
9607 | blue graphito LRV 15



886 | red uni LRV 13



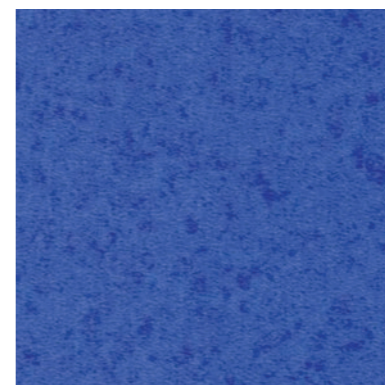
406 | red doodle LRV 27



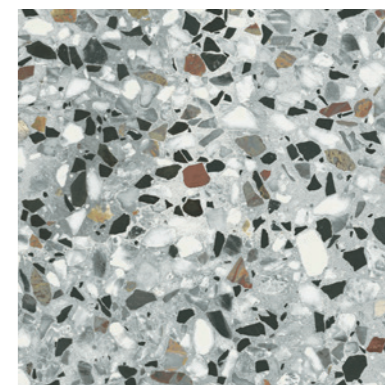
9406 | coral terrazzo LRV 46



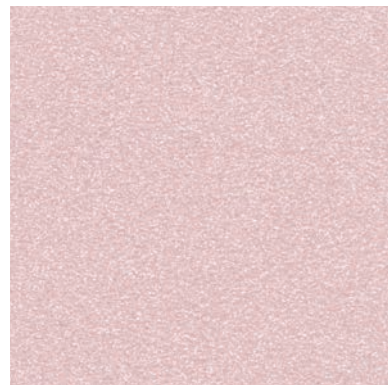
877 | dark blue uni LRV 6



267 | cobalt blue canyon LRV 42



9402 | natural terrazzo LRV 39



4807 | lilac stardust LRV 64



4803 | vanilla stardust LRV 69



4806 | soft peach stardust LRV 57



4808 | soft pistache stardust LRV 69



4804 | copper stardust, 4806 | soft peach stardust



4818 | lime stardust LRV 70



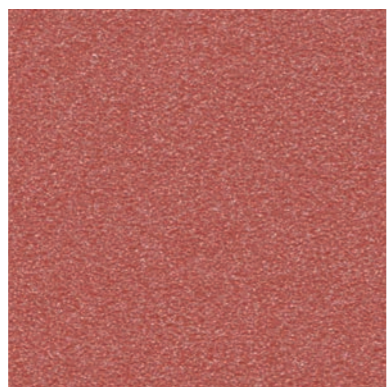
4805 | golden stardust LRV 52



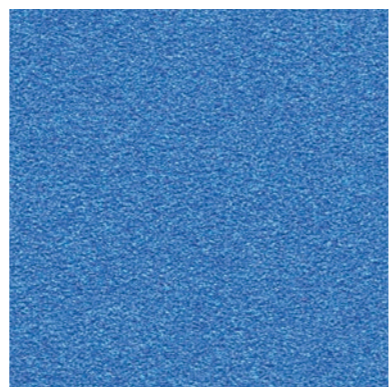
4817 | soft blue stardust LRV 61



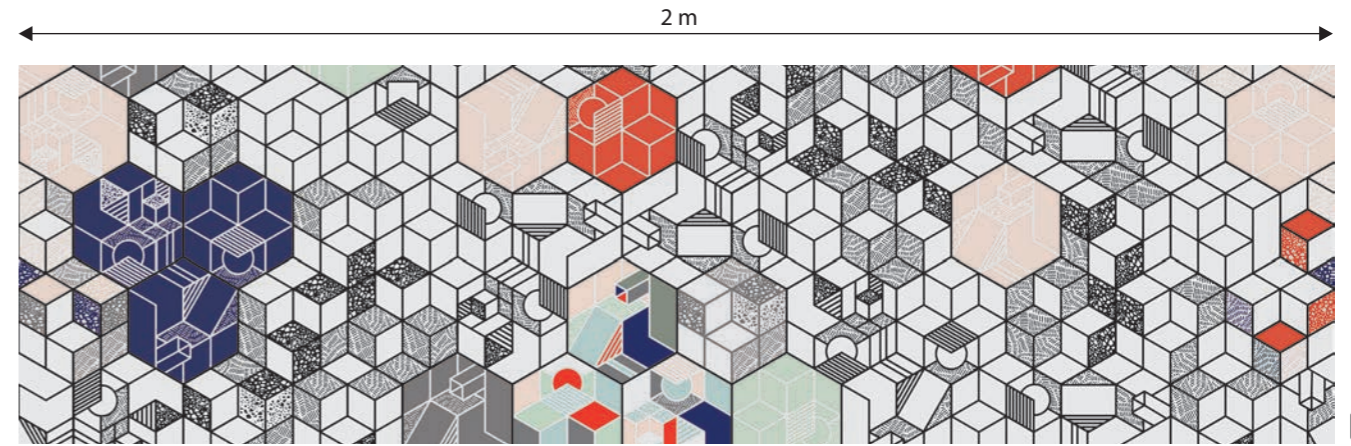
4801 | silver stardust LRV 35



4804 | copper stardust LRV 20



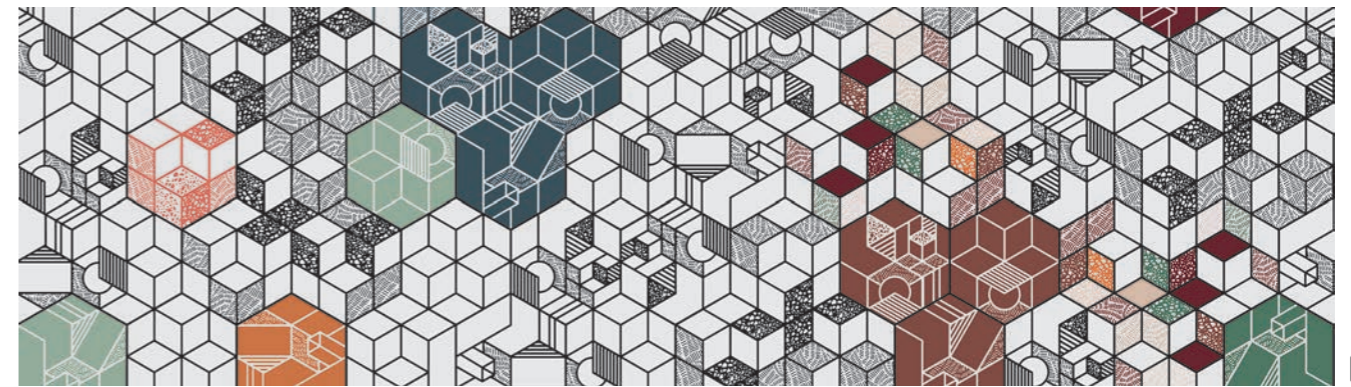
4827 | deep blue stardust LRV 24



9307 | pastel kubik LRV 31



9307 | pastel kubik, 877 | dark blue uni



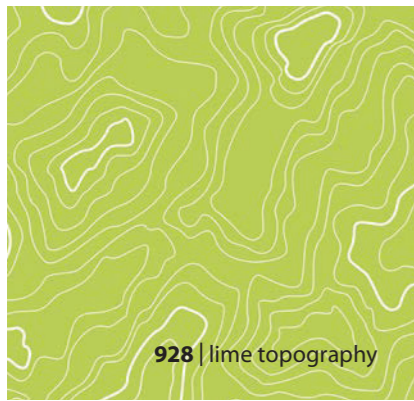
9309 | dark kubik LRV 40



9100 | multi color splash



402 | grey & white doodle



928 | lime topography



9107 | indigo color splash



223 | sand canyon, 409 | black & white doodle



4803 | vanilla stardust, 307 | pastel blue nairobi



235 | lemon canyon



9307 | pastel kubik



9100 | multi color splash



409 | black & white doodle, 928 | lime topography



9201 | light hybrid wood concrete



761 | steel concrete, 4804 | copper stardust





4817 | soft blue stardust, 4827 | deep blue stardust



303 | sand nairobi, 8514 | pure chill oak

9406 | coral terrazzo, 659 | mercury slabstone



9607 | blue graphito, 637299 | cement medium grey, nose black



9309 | dark kubik, 4804 | copper stardust

# Technical specifications

Sarlon 15 dB, Sarlon 19 dB and Modul'up 19 dB meet the requirements of EN 651 and ISO 11638  
Modul'up Compact meets the requirements of EN 10582



		Sarlon 15 dB	Sarlon 19 dB	Modul'up 19 dB	Modul'up Compact	
	Total thickness	EN ISO 24346	2.6 mm	3.4 mm	3.45 mm	2.0 mm
	Wear layer thickness	EN ISO 24340	0.70 mm	0.70 mm	0.70 mm	0.70 mm
	Commercial use	EN ISO 10874	34	34	34	34
	Industrial use	EN ISO 10874	42	42	42	43
	Packaging		Rolls	Rolls	Rolls	Rolls
	Roll length	EN ISO 24341	+/- 25 ml	+/- 25 ml	+/- 25 ml	+/- 25 ml
	Roll width	EN ISO 24341	2 m	2 m	2 m	2 m
	Total weight	EN ISO 23997	2,700 g/m <sup>2</sup>	2,900 g/m <sup>2</sup>	2,830 g/m <sup>2</sup>	2,600 g/m <sup>2</sup>
	Impact sound reduction	EN ISO 717-2	ΔLw = 15 dB	ΔLw = 19 dB	ΔLw = 19 dB	ΔLw = 4 dB
	In-room impact noise	NF S 31-074	Ln,e,w < 65 dB, Class A	Ln,e,w < 65 dB, Class A	Ln,e,w < 65 dB, Class A	Ln,e,w < 75 dB, Class B
	Sound absorption	EN ISO 354 EN ISO 11654	α <sub>w</sub> = ± 0.05	α <sub>w</sub> = ± 0.05	α <sub>w</sub> = ± 0.05	α <sub>w</sub> = ± 0.05
	Residual indentation typical value <i>Requirement</i>	EN ISO 24343-1	0.05 mm ≤ 0.20 mm	0.08 mm ≤ 0.20 mm	0.08 mm ≤ 0.20 mm	0.02 mm ≤ 0.10 mm
	Slip resistance	DIN 51130	R10	R10	R10	R10
	Abrasion resistance	EN 660-2	T	T	T	T
	Castor chair resistance	ISO 4918	Yes	Yes	Yes	Yes
	Furniture leg resistance	EN ISO 16581	compliant	compliant	compliant	compliant
	Dimensional stability	EN ISO 23999	≤ 0.10 %	≤ 0.10 %	≤ 0.10 %	≤ 0.10 %
	Colour fastness to light <i>Requirement</i>	EN ISO 105-B02	7 ≥ 6	7 ≥ 6	7 ≥ 6	7 ≥ 6
	Stain resistance	EN ISO 26987	Excellent	Excellent	Excellent	Excellent
	Anti-bacterial activity <sup>(3)</sup>	ISO 22196 or ISO 846	>99 % inhibits growth	>99 % inhibits growth	>99 % inhibits growth	>99 % inhibits growth
	Surface treatment		XtremPUR™	XtremPUR™	XtremPUR™	XtremPUR™
	Emissions into air : TVOC* at 28 days	EN 16516	≤ 0.01 mg/m <sup>3</sup>	≤ 0.01 mg/m <sup>3</sup>	≤ 0.02 mg/m <sup>3</sup>	≤ 0.02 mg/m <sup>3</sup>
	<b>Creating better environments</b>					
	Renewable electricity		Sarlon and Modul'up are manufactured using 100% electricity made from renewable sources			
	Back to the Floor		Installation off cuts can be collected via Back to the Floor. Modul'up is recyclable at end of life.			
	Ska rating		Sarlon and Modul'up meet the Ska Rating criteria for M12 soft floor coverings in office, retail and higher education schemes			
	REACH (European regulation)	1907/2006/CE	compliant <sup>(1)</sup>	compliant <sup>(1)</sup>	compliant <sup>(1)</sup>	compliant <sup>(1)</sup>
	Compliance EN 14041		0200860-DOP-010	0200859-DOP-010	0200859-DOP-010	0200862-DOP-010
	Reaction to fire	EN 13501-1	B <sub>fl</sub> - s1, L, NCS	B <sub>fl</sub> - s1, L, NCS	C <sub>fl</sub> - s1, L, NCS	B <sub>fl</sub> - s1, L, NCS
	Slip resistance	EN 13893	μ ≥ 0.30	μ ≥ 0.30	μ ≥ 0.30	μ ≥ 0.30
	Body voltage	EN 1815	≤ 2 kV	≤ 2 kV	≤ 2 kV	≤ 2 kV
	Thermal conductivity <sup>(2)</sup>	EN 12524 (EN ISO 10456)	0.25 W/(m.K)	0.25 W/(m.K)	0.25 W/(m.K)	0.25 W/(m.K)

<sup>(1)</sup> The articles (products) do not contain substances of the candidate list published by ECHA (SVHC substances of very high concern) to be declared in accordance with REACH.  
<sup>(2)</sup> The products are suitable for underfloor heating.  
<sup>(3)</sup> To strictly follow the Forbo cleaning recommendation process is the best protection against infection. Please visit [www.forbo-flooring.co.uk/acousticdownloads](http://www.forbo-flooring.co.uk/acousticdownloads) to access our full Cleaning and Maintenance instructions  
\* TVOC : total volatile organic compounds

All Forbo Flooring Systems' sales organisations worldwide have a certified Quality Management System in accordance with ISO 9001.  
All Forbo Flooring Systems' manufacturing operations have a certified Environmental Management System in accordance with ISO 14001.  
The Life Cycle Assessment (LCA) of Forbo Flooring Systems' products is documented in individual Environmental Product Declarations (EPD's) which can be found on our website [www.forbo-flooring.co.uk](http://www.forbo-flooring.co.uk)  
Sarlon and Modul'up are manufactured in a facility certified to SA 8000\* and OHSAS 18001.



**UK**  
Forbo Flooring UK Limited  
High Holborn Road,  
Ripley, Derbyshire, DE5 3NT

**London EC1 showroom**  
79 St John Street, Clerkenwell  
London EC1M 4NR  
Tel. 0207 553 9300

**For commercial enquiries :**  
If calling from the North,  
London & South East  
Tel. 0800 0282 162  
If calling from Scotland,  
Midlands & South West  
Tel. 0800 0935 258

**Nuway enquiries :**  
Tel. 01773 740 688  
Fax 01773 740 640

**Residential enquiries :**  
Tel. 0800 0935 846  
Fax 01592 643 999

E-mail : [info.flooring.uk@forbo.com](mailto:info.flooring.uk@forbo.com)  
[www.forbo-flooring.co.uk](http://www.forbo-flooring.co.uk)

**Samples :**  
**Tel. 0800 731 2369**  
**Email: [samples.uk@forbo.com](mailto:samples.uk@forbo.com)**

**Ireland**  
Forbo Ireland Ltd.  
2 Deansgrange Business Park  
Blackrock  
Co Dublin  
Tel. 00353 1 2898 898  
Fax 00353 1 2898 177  
E-mail : [info.ireland@forbo.com](mailto:info.ireland@forbo.com)  
[www.forbo-flooring.ie](http://www.forbo-flooring.ie)

Whilst Forbo Flooring UK Limited does its best to ensure that the contents of this samplebook are correct and accurate at the time of publication, to the fullest extent permitted by law, Forbo Flooring UK Limited makes no, and expressly disclaims all, guarantees of any kind, expressed or implied in respect of the information, content, materials or products displayed in this samplebook and does not represent that the information is accurate, complete or current and you are advised to visit our website at [www.forbo-flooring.co.uk](http://www.forbo-flooring.co.uk) for up-to-date details or corrections to such contents.

**Registered office :**  
Forbo Flooring UK Limited  
High Holborn Road  
Ripley  
Derbyshire DE5 3NT  
Registered in England 9200318



FLOORING SYSTEMS

creating better environments