

CENTURA



ROPPE.
Proven. Flooring. Experiences.

MULTI-USE FLOORING

RUBBER TILE AND VINYL SHEET

MULTI-USE FLOORING

RUBBER TILE AND VINYL SHEET

TUFLEX® SPARTUS

MULTI-USE RUBBER TILE

TUFLEX® SPARTUS MARBLE

MULTI-USE RUBBER TILE

Tuflex® Spartus multi-use rubber tiles, developed for sports and commercial applications, have been proven in the industry since 1957. Tuflex® Spartus tiles are manufactured using a simultaneous vulcanization process and a new, industry-leading Red List Chemical Free formulation that is FREE of tire-derived crumb rubber – the first in the industry! Using manufacturing waste from our own RLCF rubber tile and tread products ensures that we know what the formulation consists of and the improved benefits it will provide. Choose from 14 chip combinations and marble options using five of the most popular Roppe colors.



Tuflex® Spartus
933 Oceania with
Logo 100 Black,
186 Red, 170 White



Tuflex® Spartus Marble,
M916 Ash Marble



ShockGuard, 669 Battleship

On the Cover: 031 Fiesta,
933 Oceania, Custom Red



Gallant, M677 Gingerbread,
M627 Mariner, M137 Cinnabar



Armour, 627 Mariner

GALLANT MULTI-USE RUBBER TILE

Gallant is a multi-use rubber tile that is perfect for areas with high traffic, rolling loads or light free weights, including education, retail, and sports facilities, plus others. The formulation is durable, provides comfort underfoot, and has sound control properties. It's an affordable and sustainable solution when considering durability in heavy-use spaces, plus it provides low maintenance and long life cycle. The product will retain elastic recovery for decades over competitive vinyl sports flooring. Available in seven tonal marble colors.

ARMOUR MULTI-USE RUBBER TILE

Armour is a multi-use rubber tile with superior surface durability that can be used anywhere with high traffic from shoes/boots with protrusions, blades, metal spikes, wheels or abrasive materials, including arenas/rinks, field houses, indoor skate parks, stadium concourses, plus others. It features an enhanced formulation that offers increased durability and damage resistance, plus increased longevity and minimal maintenance. It does not contain recycled content and is the only Red List Chemical Free sports flooring product on the market with as much as 38% biobased content. Available in seven of our most popular solid colors.

SHOCKGUARD MULTI-USE VINYL SHEET

ShockGuard is a new durable athletic flooring solution designed for training facilities, gyms, studios, courts, locker rooms and multi-use recreation spaces. Constructed of seven layers to deliver maximum impact resistance, reducing fatigue, and preventing injuries. It is also the thickest ASTM F2772 Class 2 vinyl sheet flooring available. EverProtect, our factory applied permanent polyurethane finish enhances resilience and protects the floor during use and between cleanings. Available in three wood grain options plus seven accent colors for adding custom logos and line kits.

SHOCKGUARD

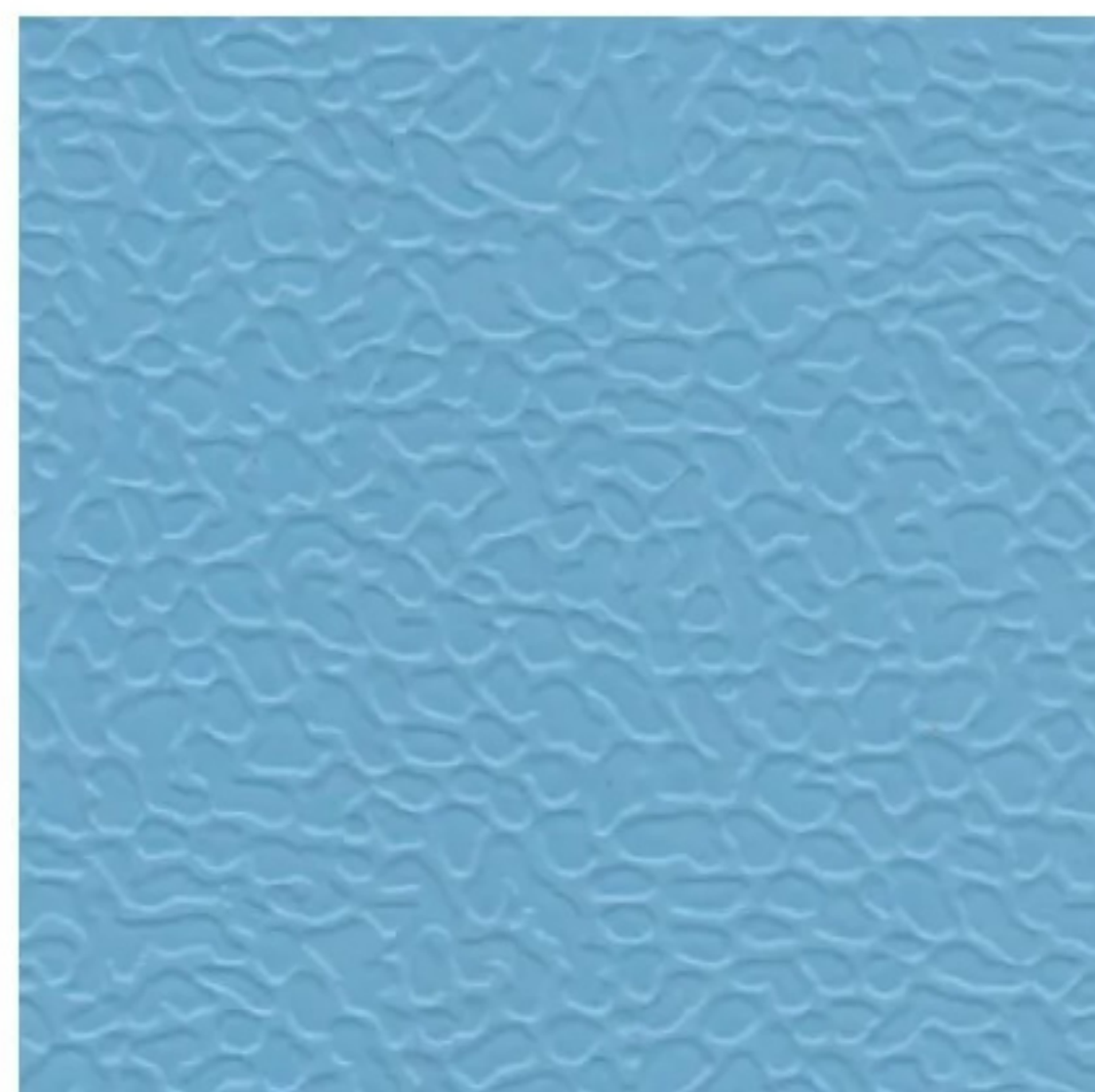
MULTI-USE VINYL SHEET

ROPPE

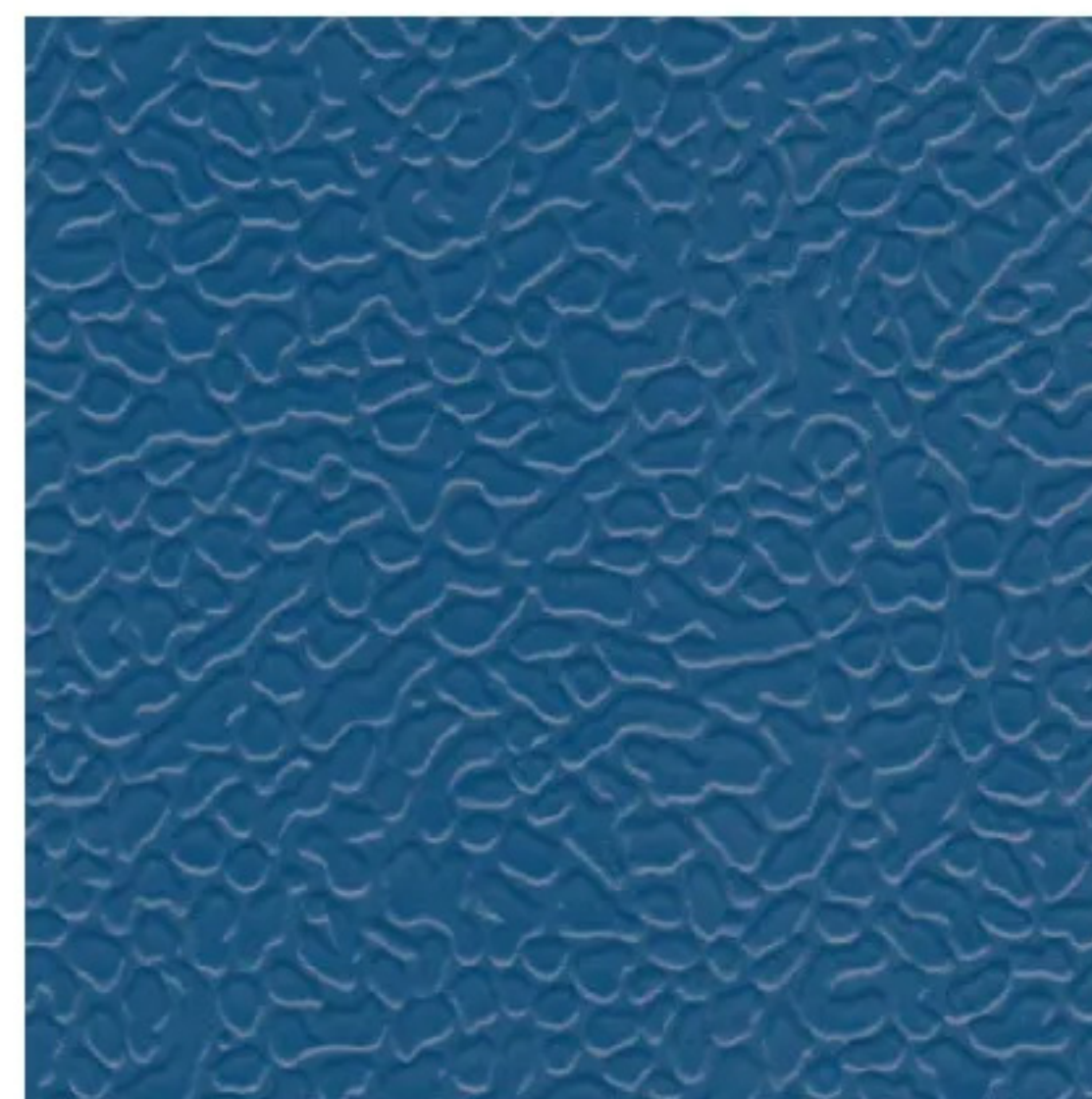
Proven. Flooring. Experiences.



670 asphalt



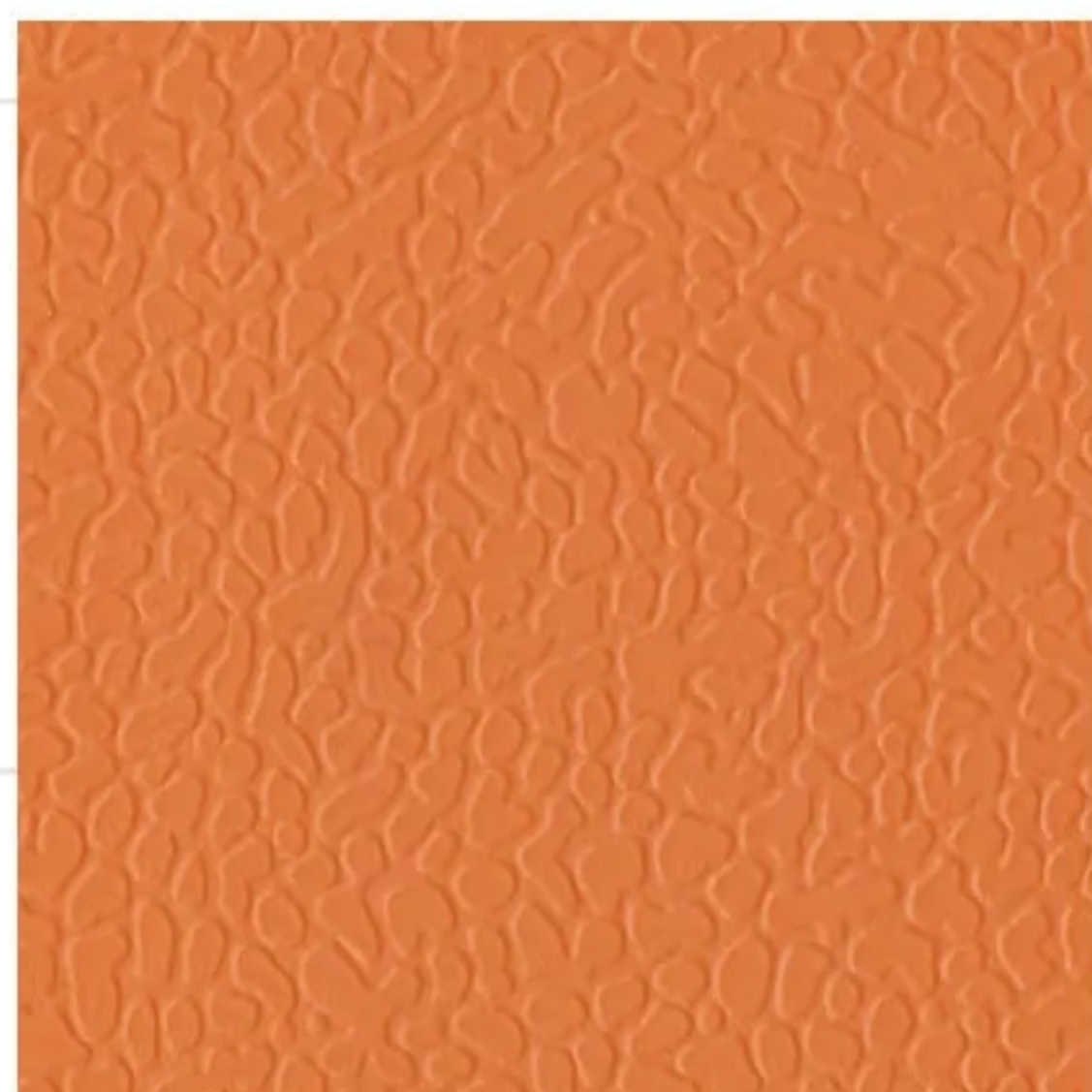
920 sky blue



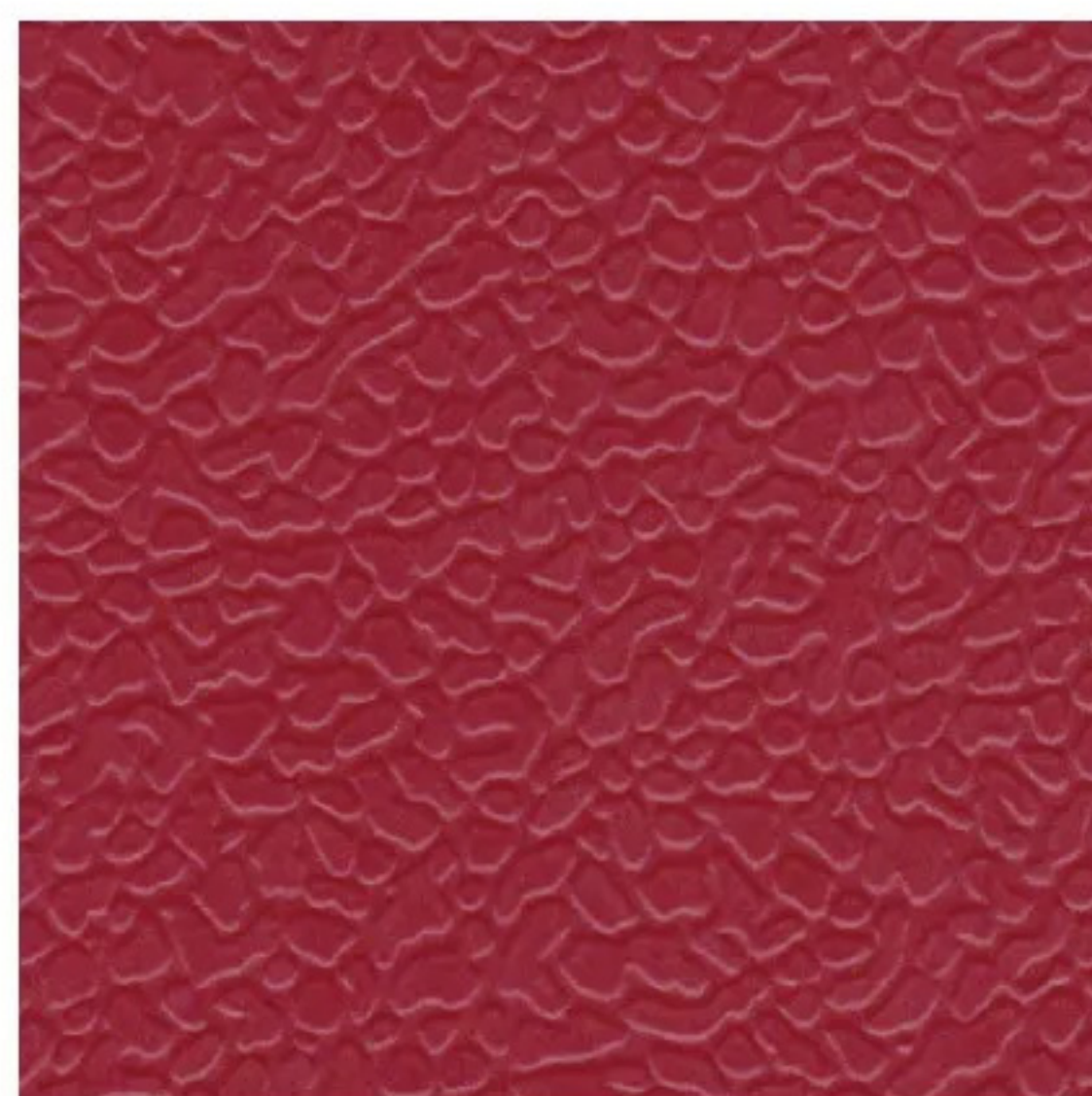
922 regatta



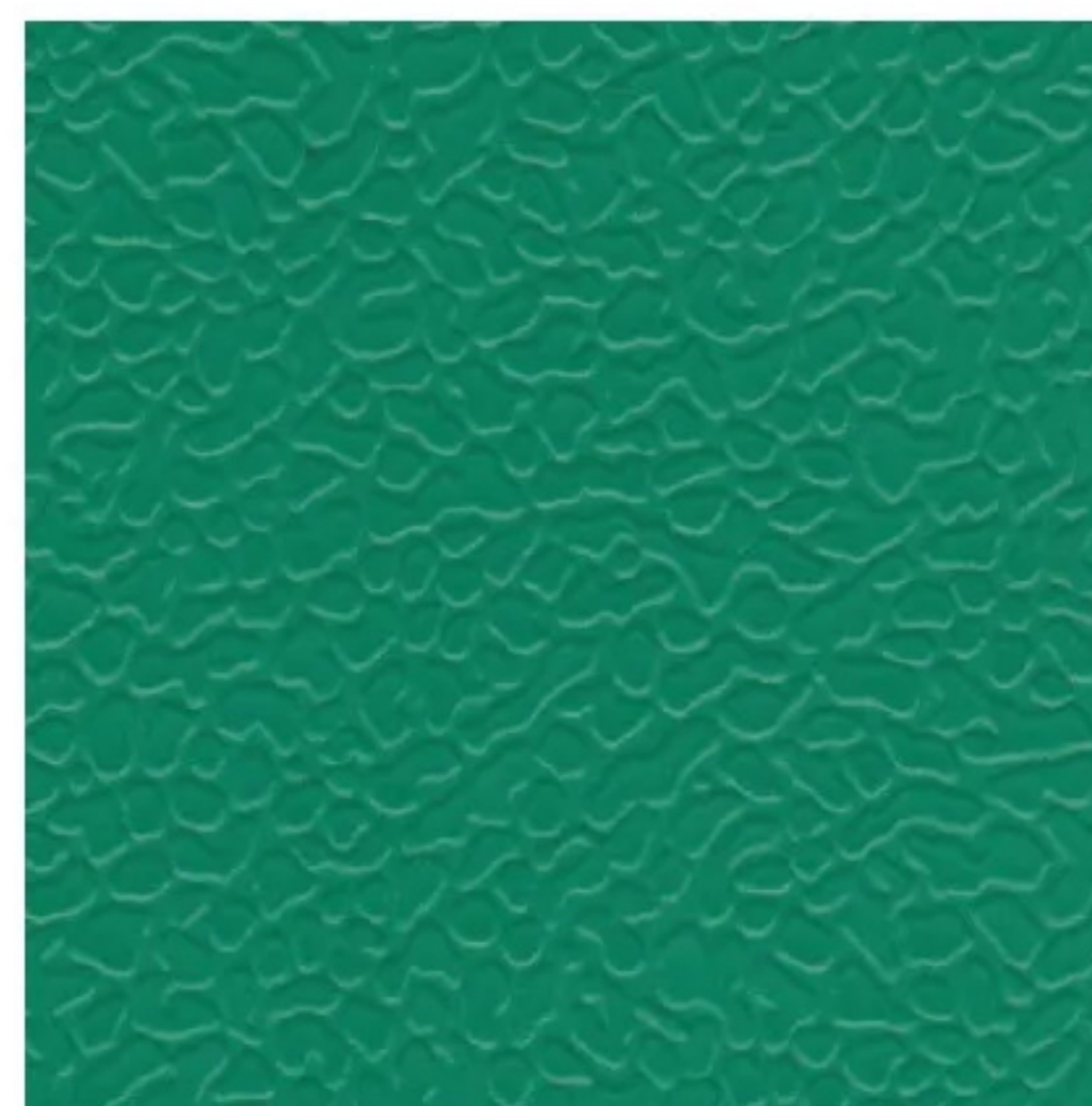
669 battleship



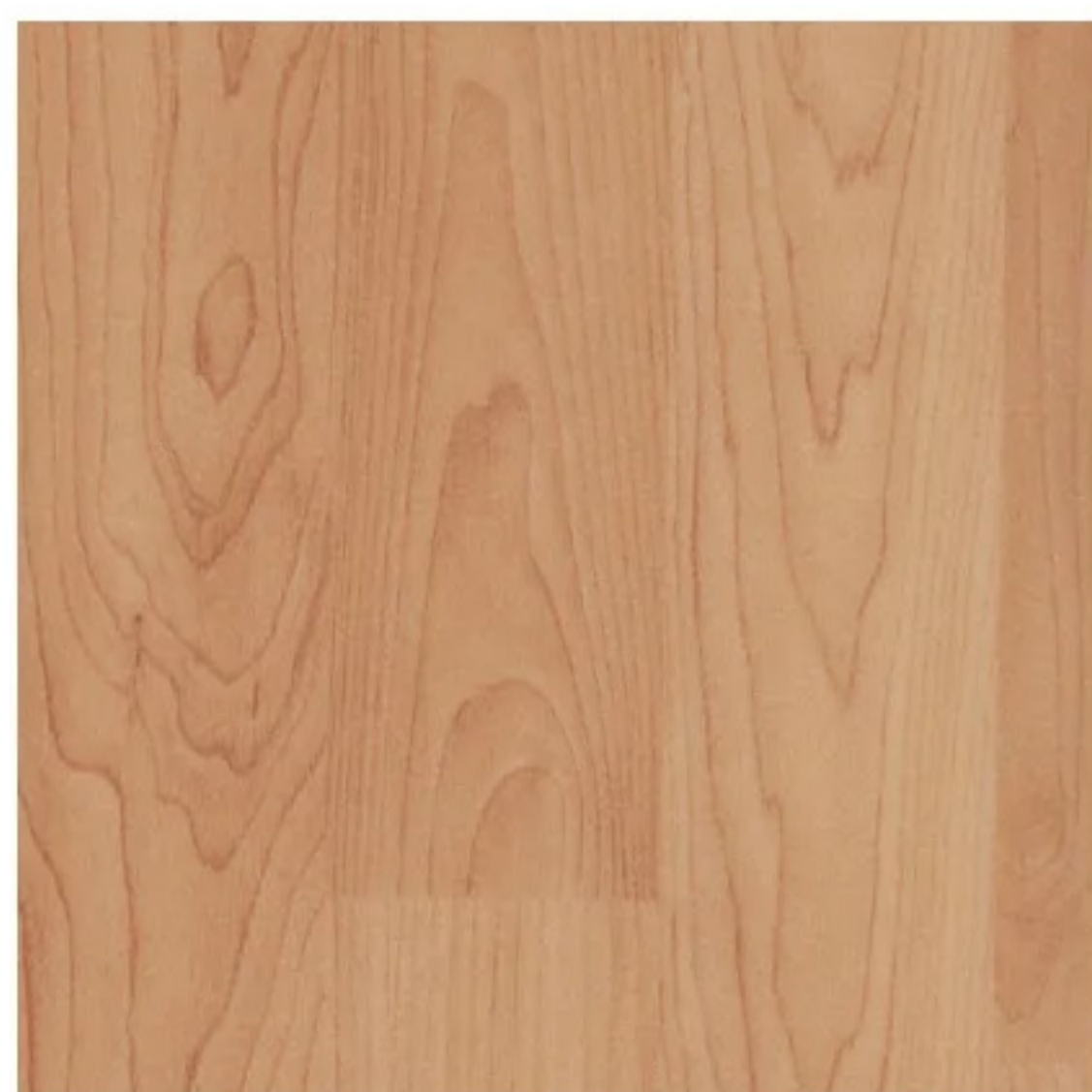
923 carrot



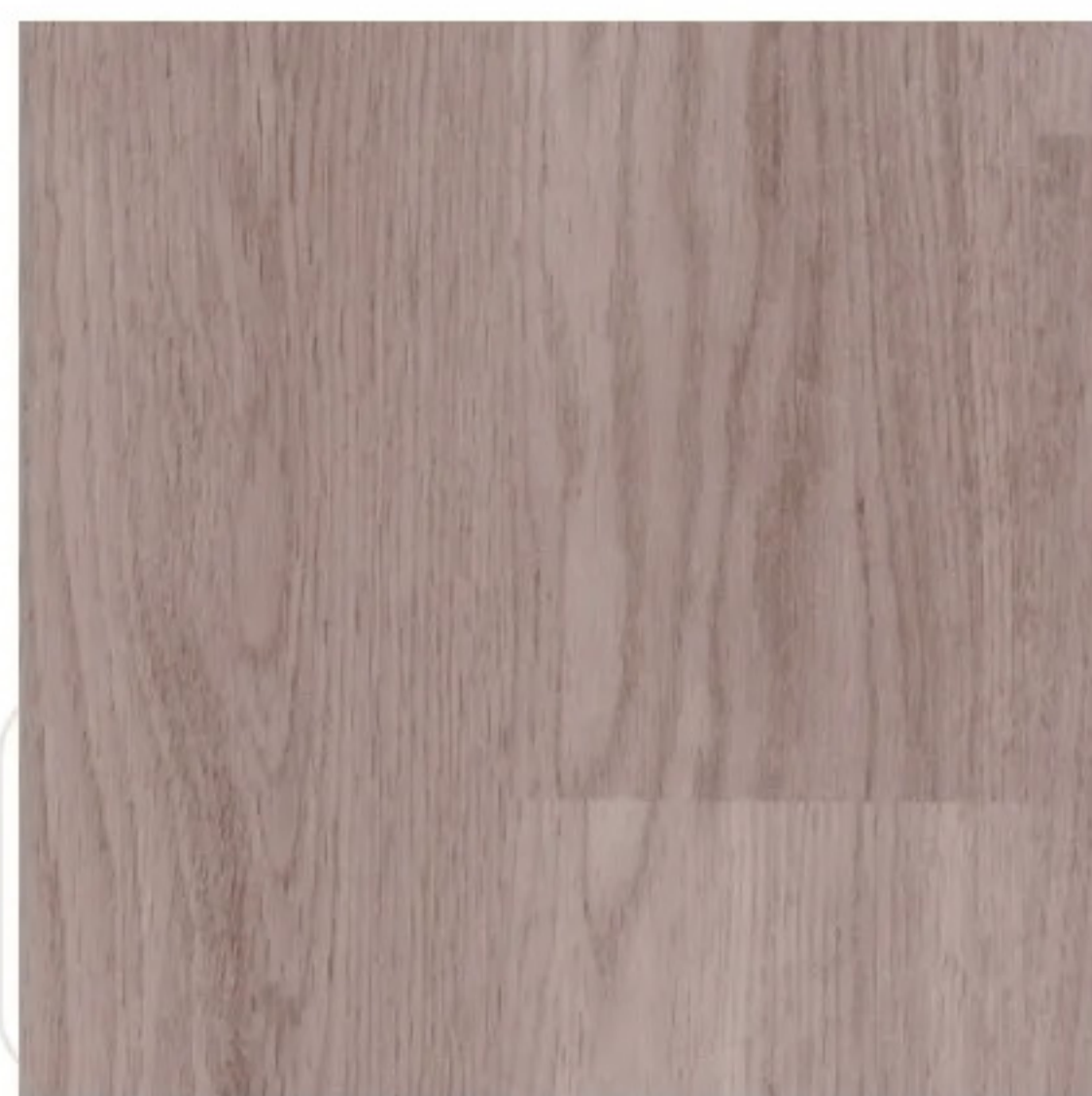
186 red



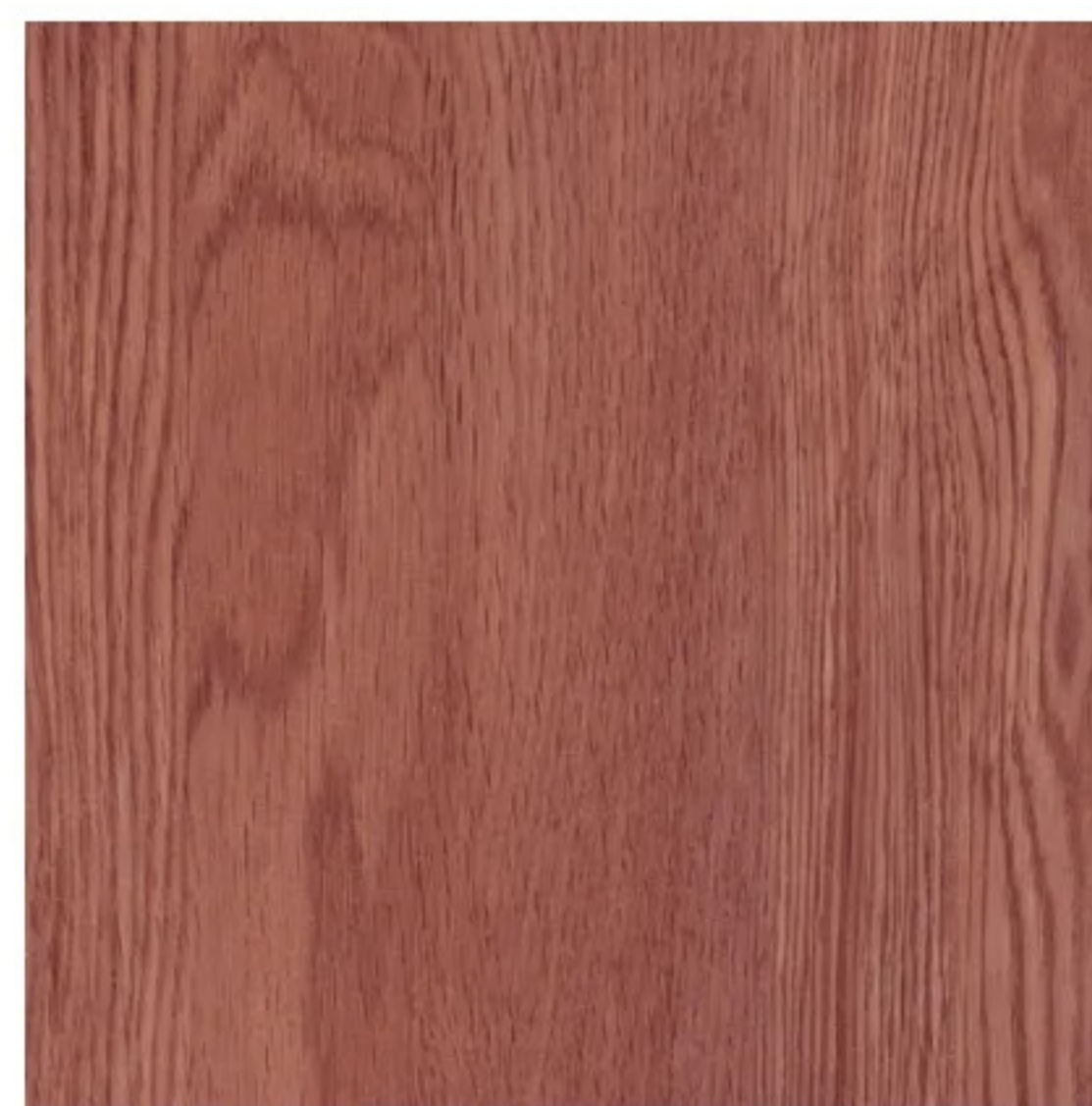
683 irish green



917 golden



918 hazel



919 cinnamon

SHOCKGUARD SPECS

**Solid Colors
Sheet Size**

5'11" x 49'

**Wood Grain
Colors
Sheet Size**

5'11" x 85'

Gauge

9/32" (7 mm)

Surface

Hammered



CERTIFIED BY
SCS Global Services

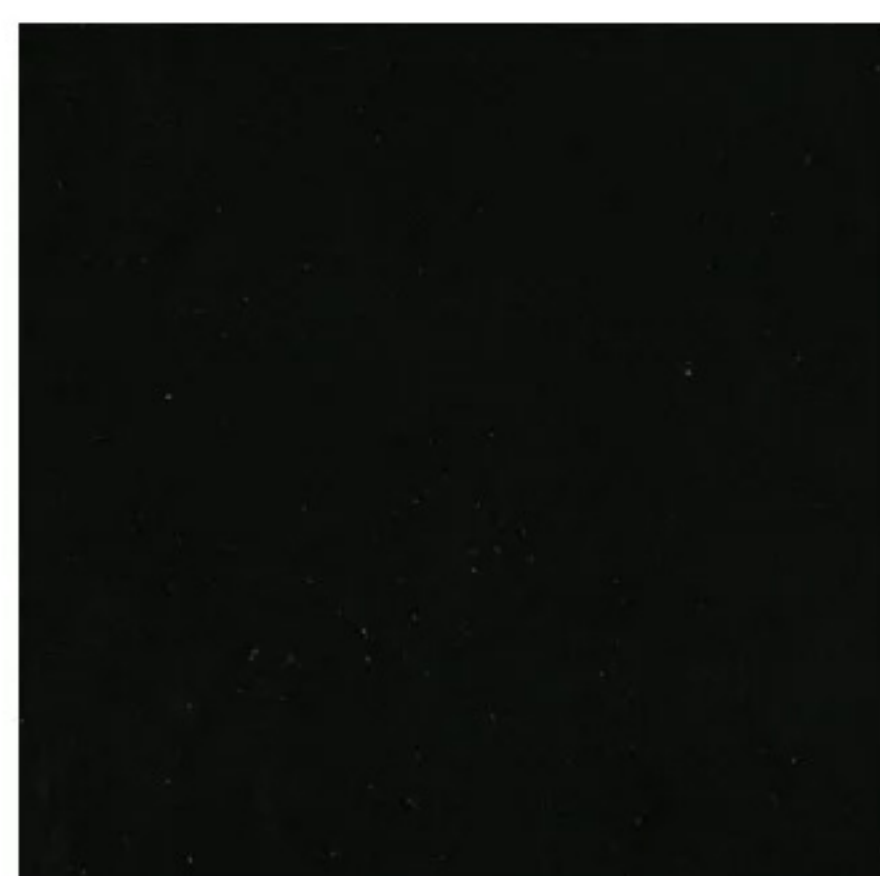
EVERPROTECT FINISH

EverProtect ensures resistance to chemicals, scratches and stains, offering robust protection and ease of maintenance thus providing a healthy & hygienic flooring for situational use involving pedestrian and rolling traffic. It never needs to be waxed or polished for the life of the product providing life-cycle cost savings to the building owner, comfortable feel underfoot and a pleasant, muted satin finish.



TUFLEX® SPARTUS

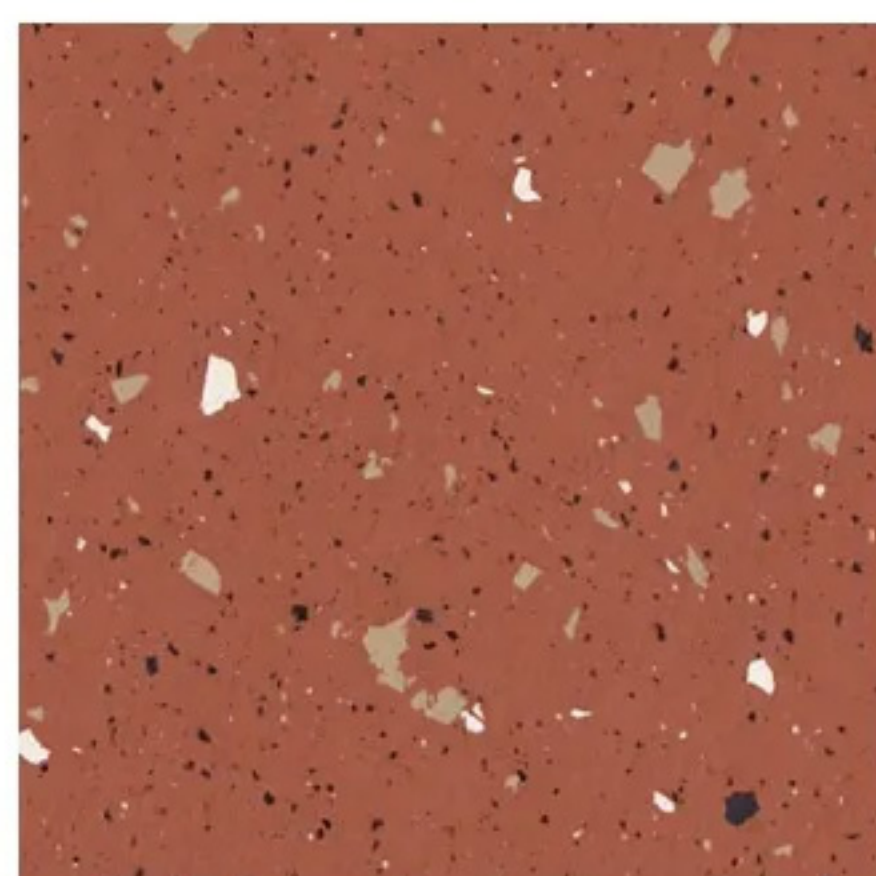
MULTI-USE RUBBER TILE



849 ebony



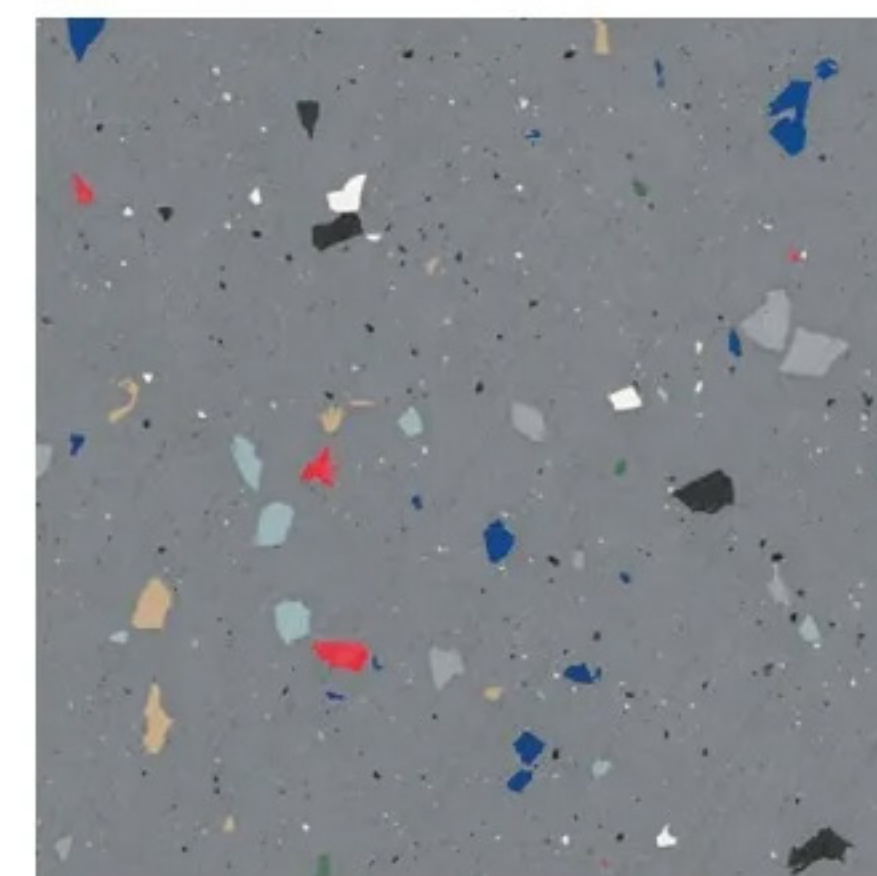
977 natural



901 adobe



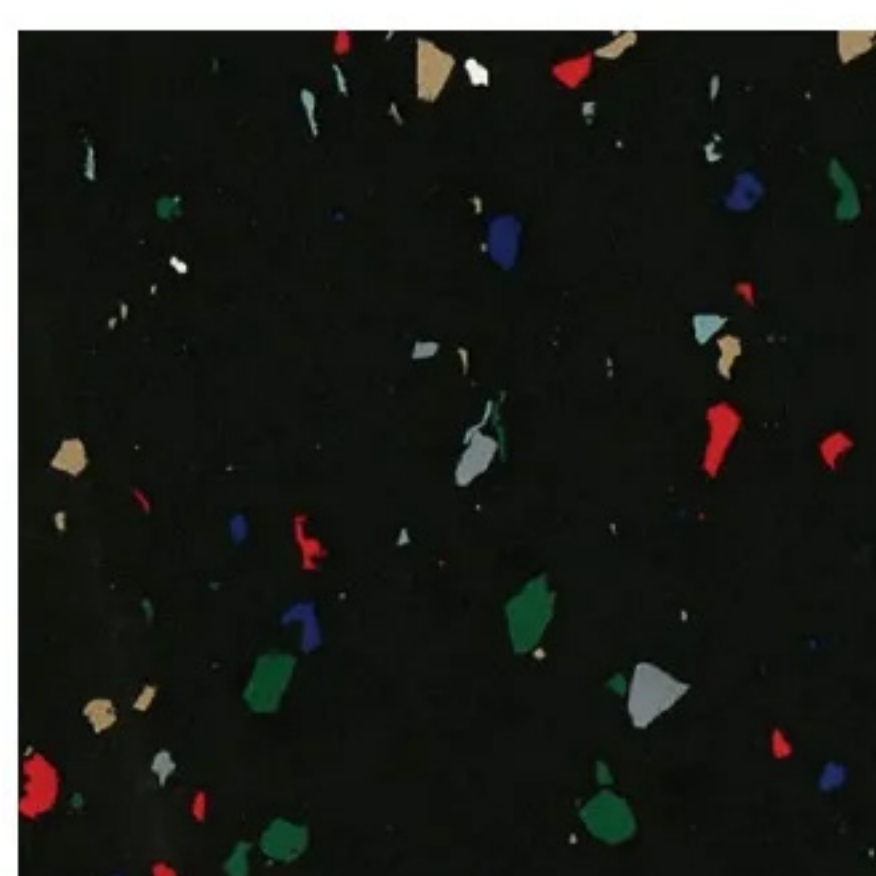
934 rouge



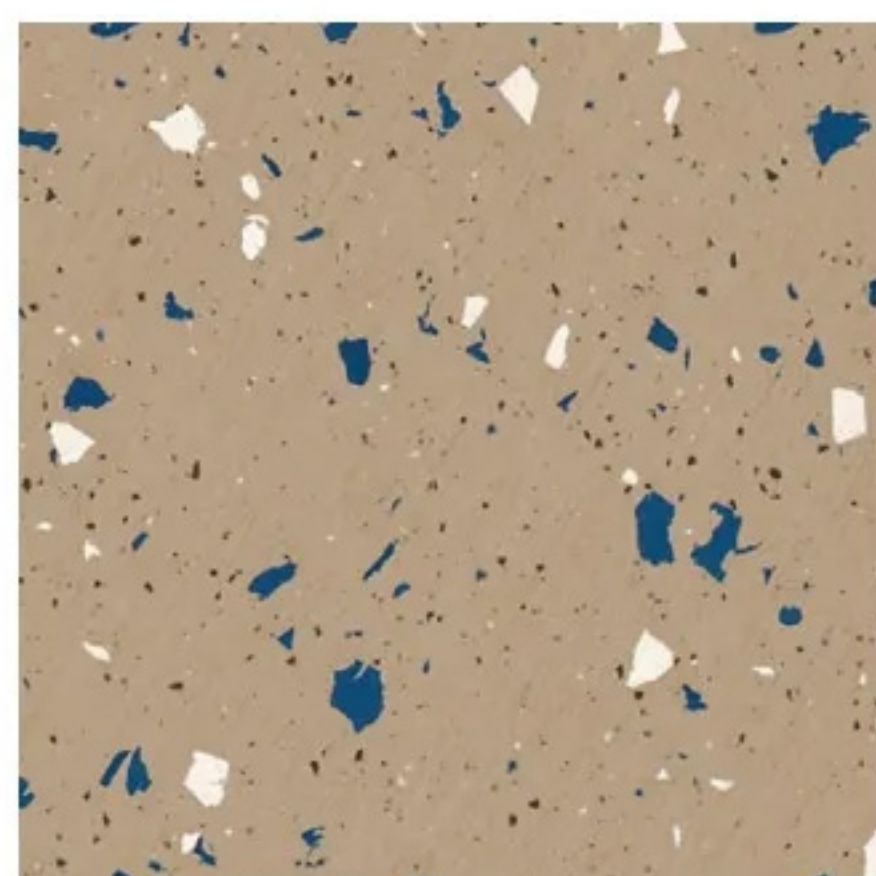
031 fiesta



982 taupe



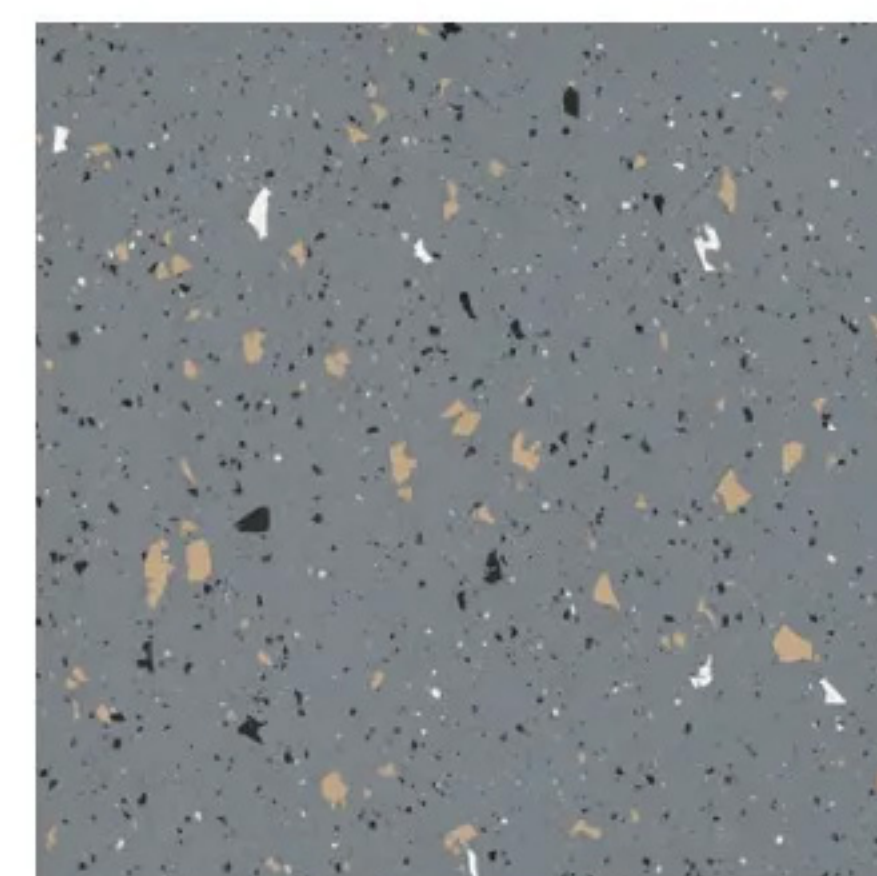
950 confetti



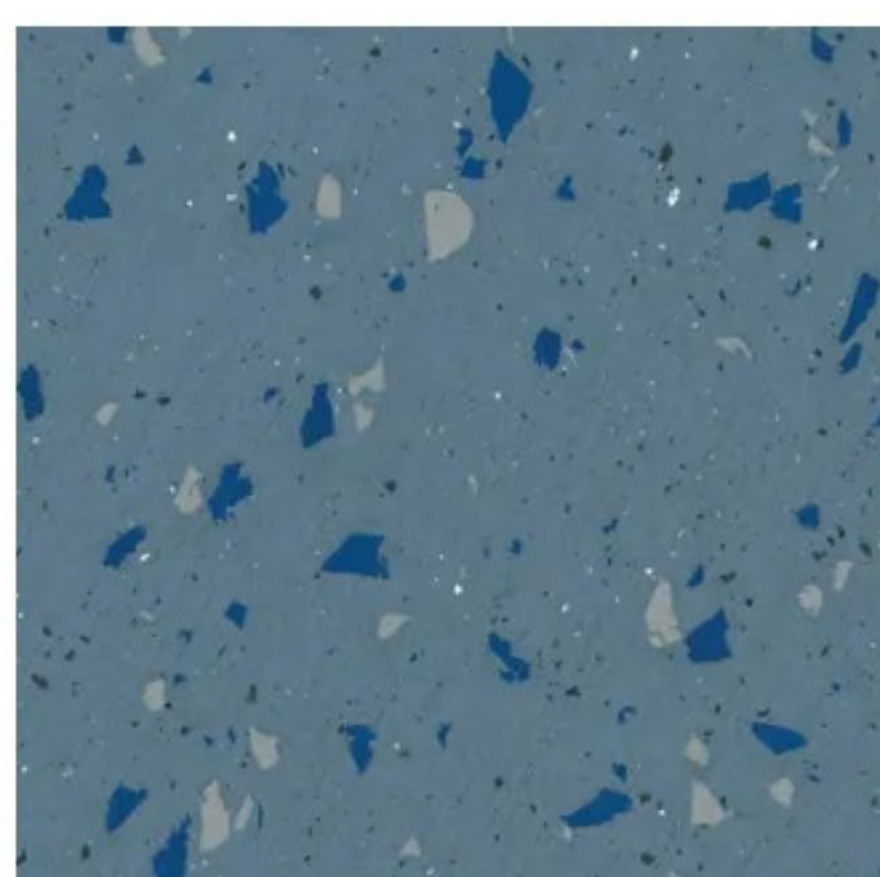
931 desert



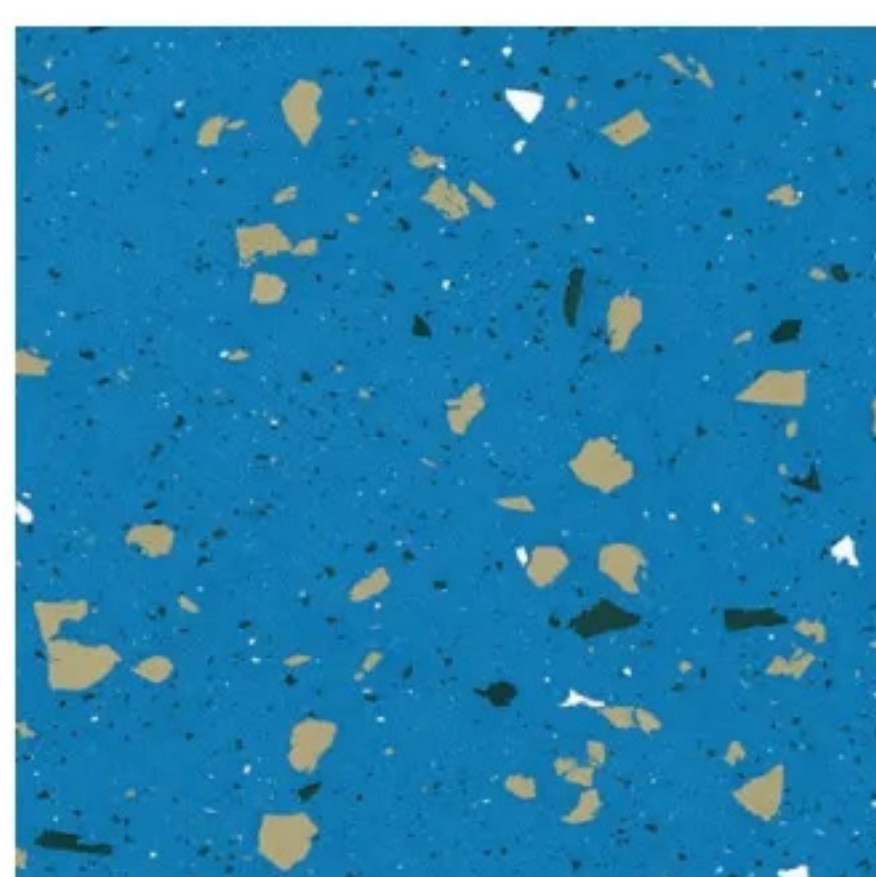
913 charcoal



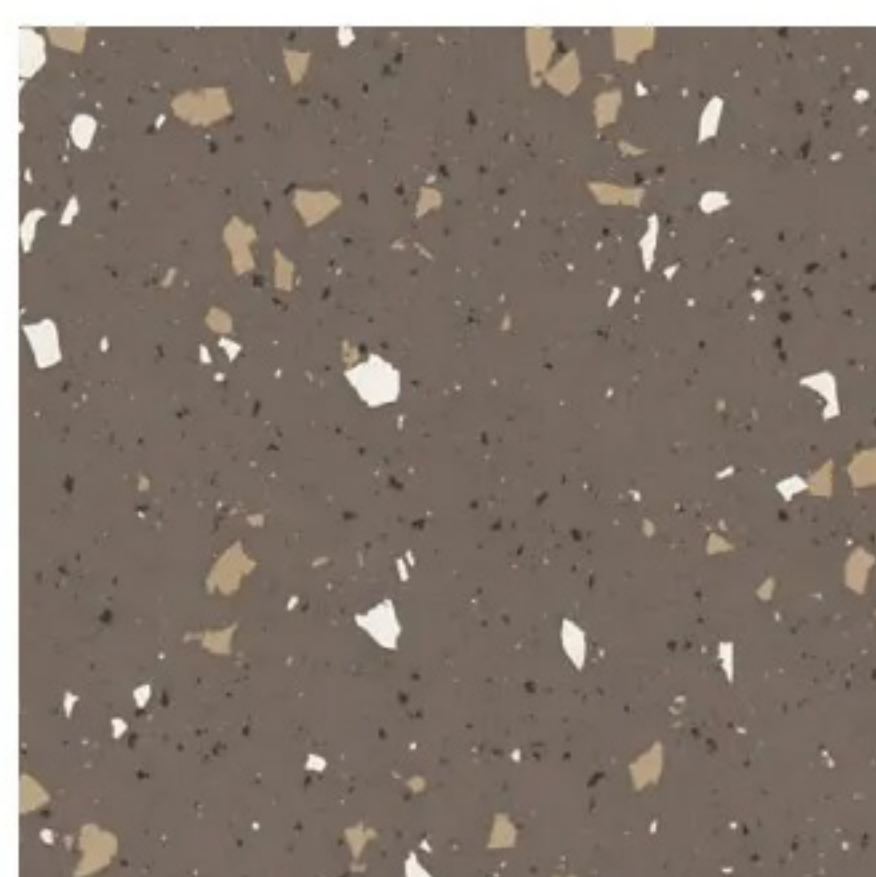
916 ash



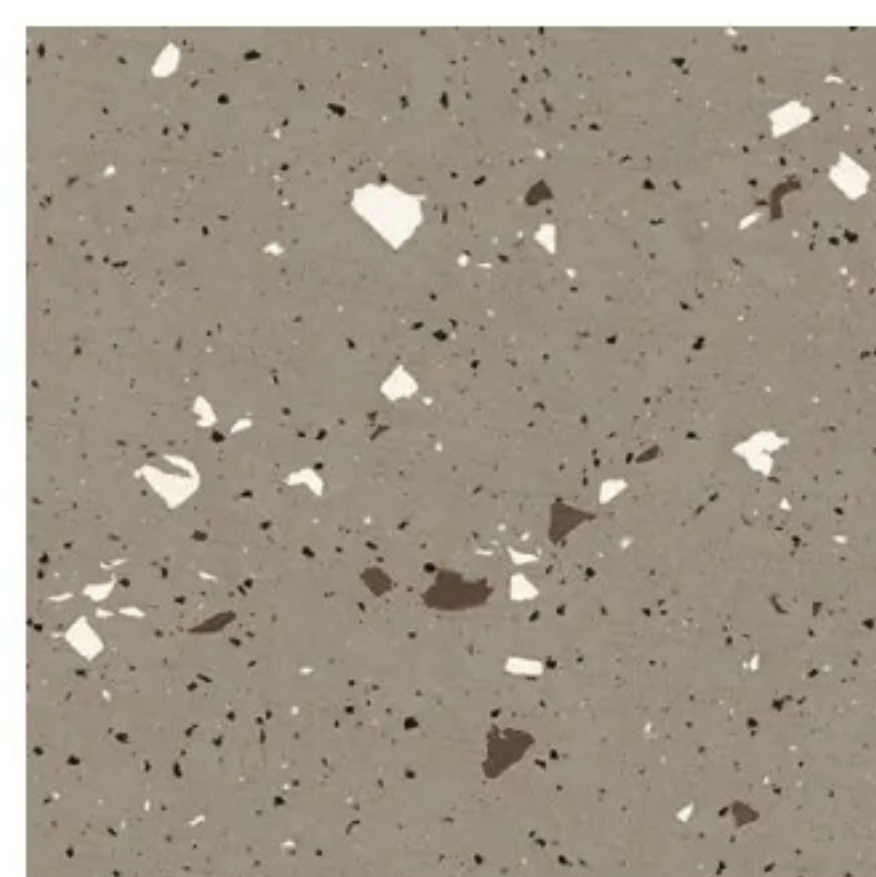
933 oceania



911 seabreeze



932 cocoa



936 dusk



TUFLEX® SPARTUS/TUFLEX® SPARTUS MARBLE SPECS

Square Size	27" x 27" nominal (686 mm x 686 mm nominal)
Interlocking Square Size	25-3/4" x 25-3/4" nominal (609.6 mm x 609.6 mm nominal)
Gauge	3/8" (9.5 mm)
Surface	Smooth

TUFLEX® SPARTUS / TUFLEX® SPARTUS MARBLE CERTIFICATIONS AND FEATURES

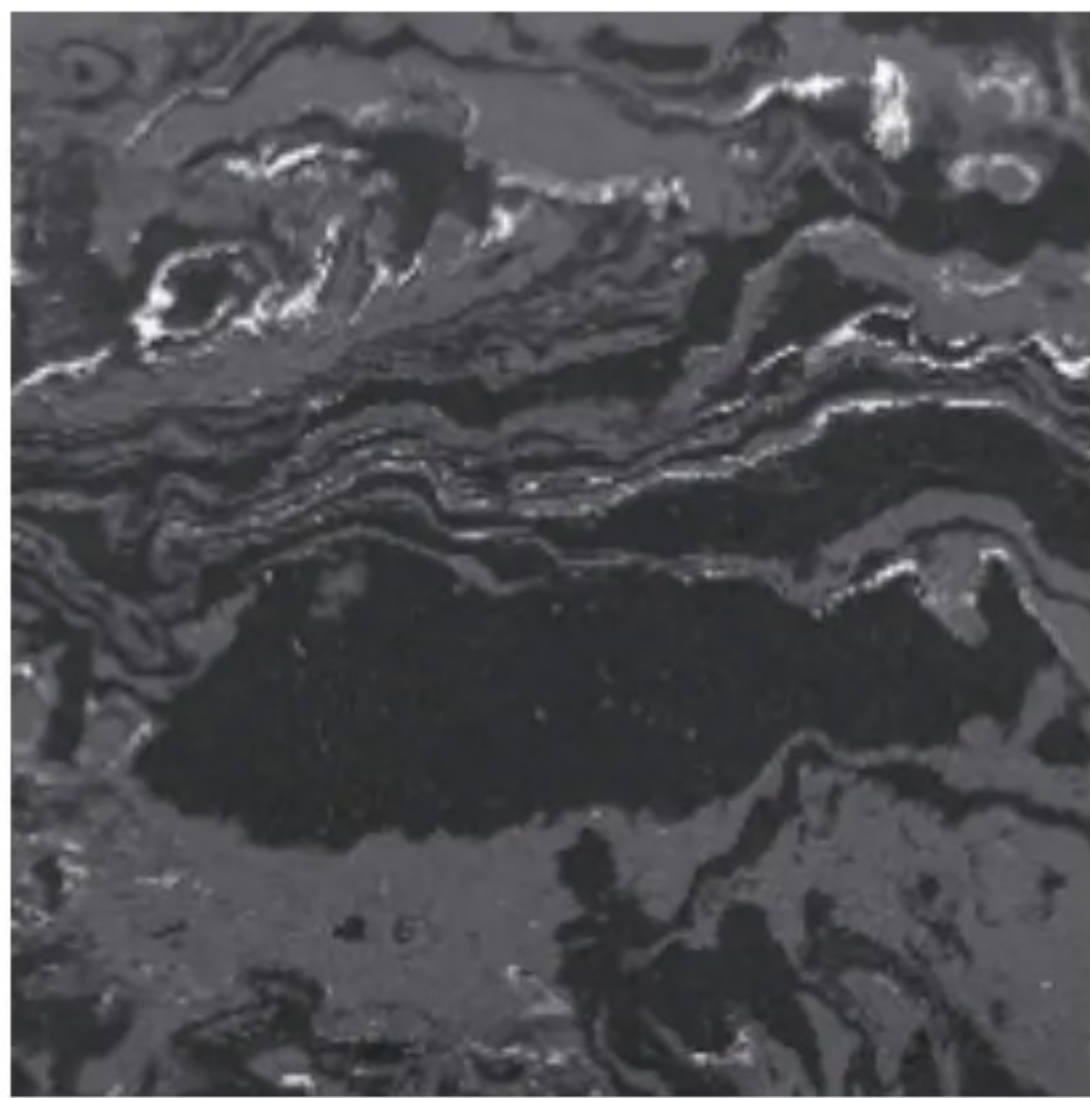


Health Product Declaration® is available at roppe.com

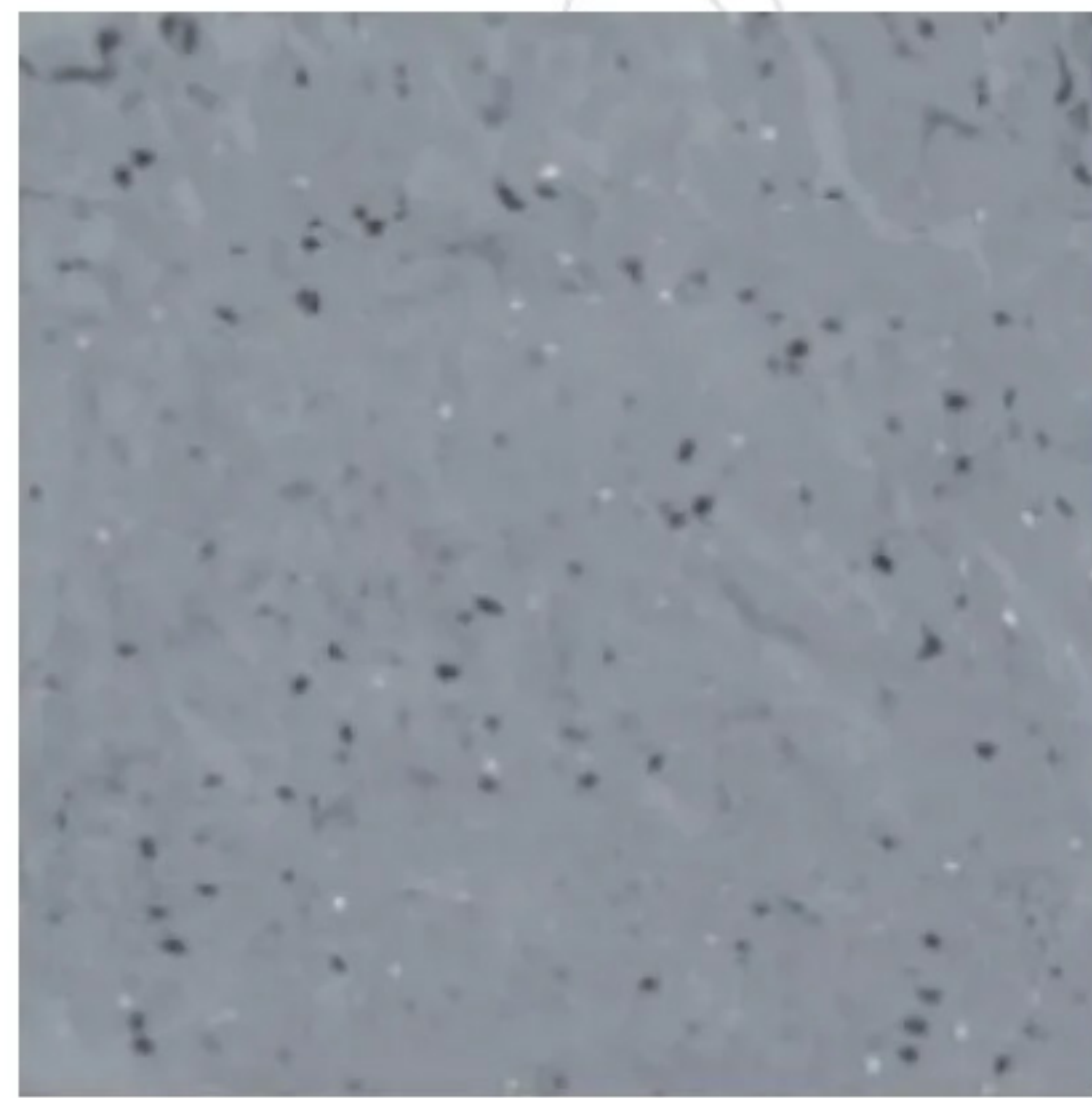
TUFLEX® SPARTUS MARBLE

MULTI-USE RUBBER TILE

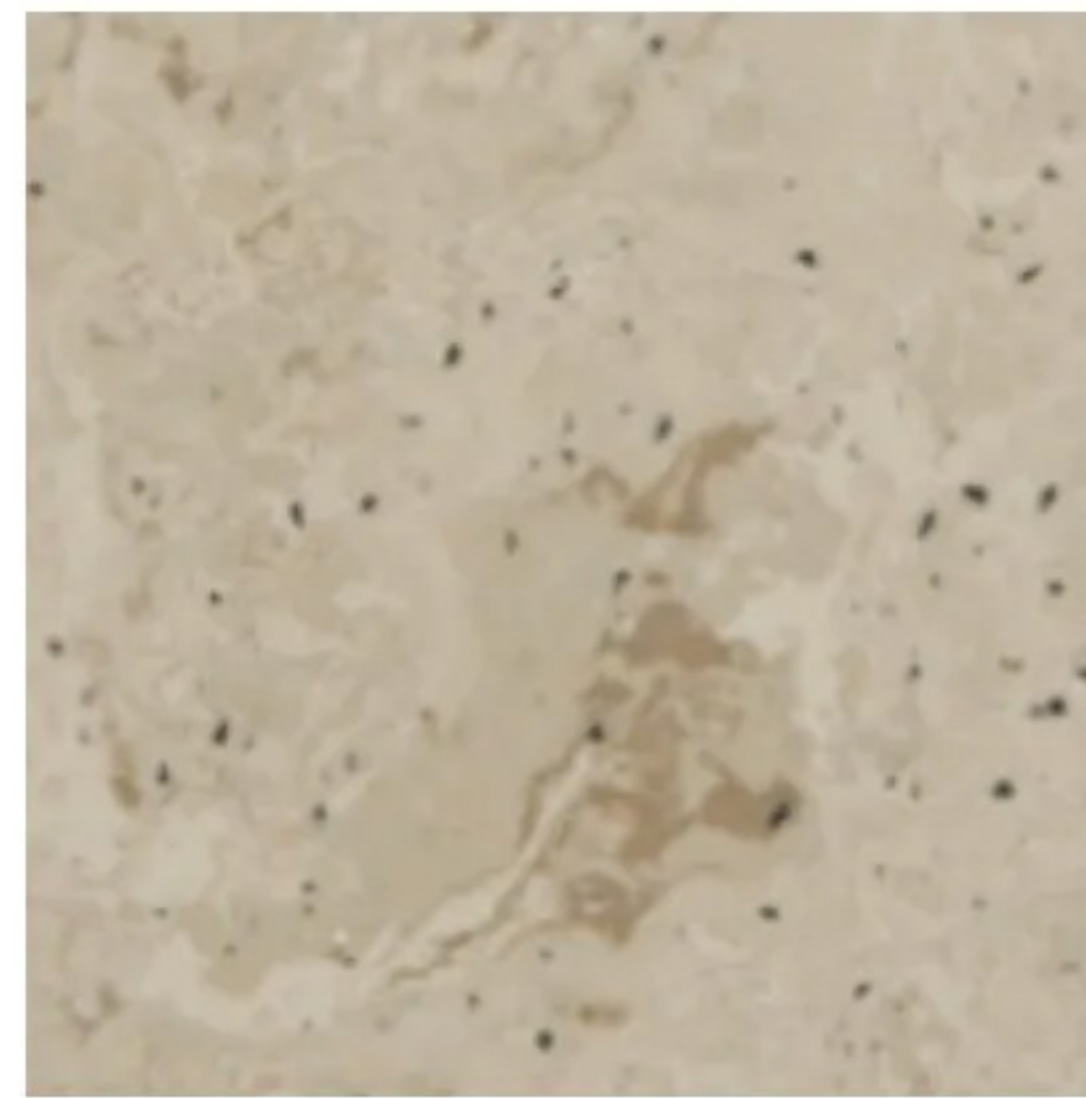
proudly made in the
USA



M977 natural marble

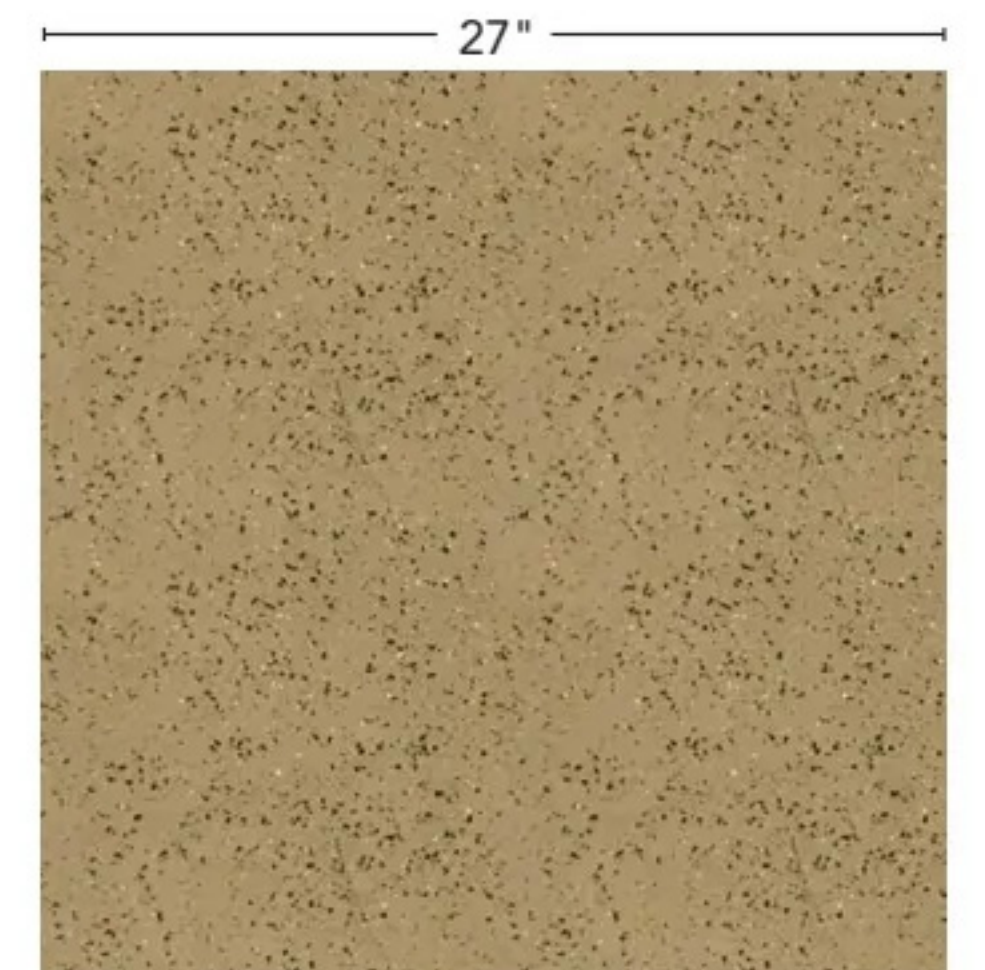


M916 ash marble



M931 desert marble

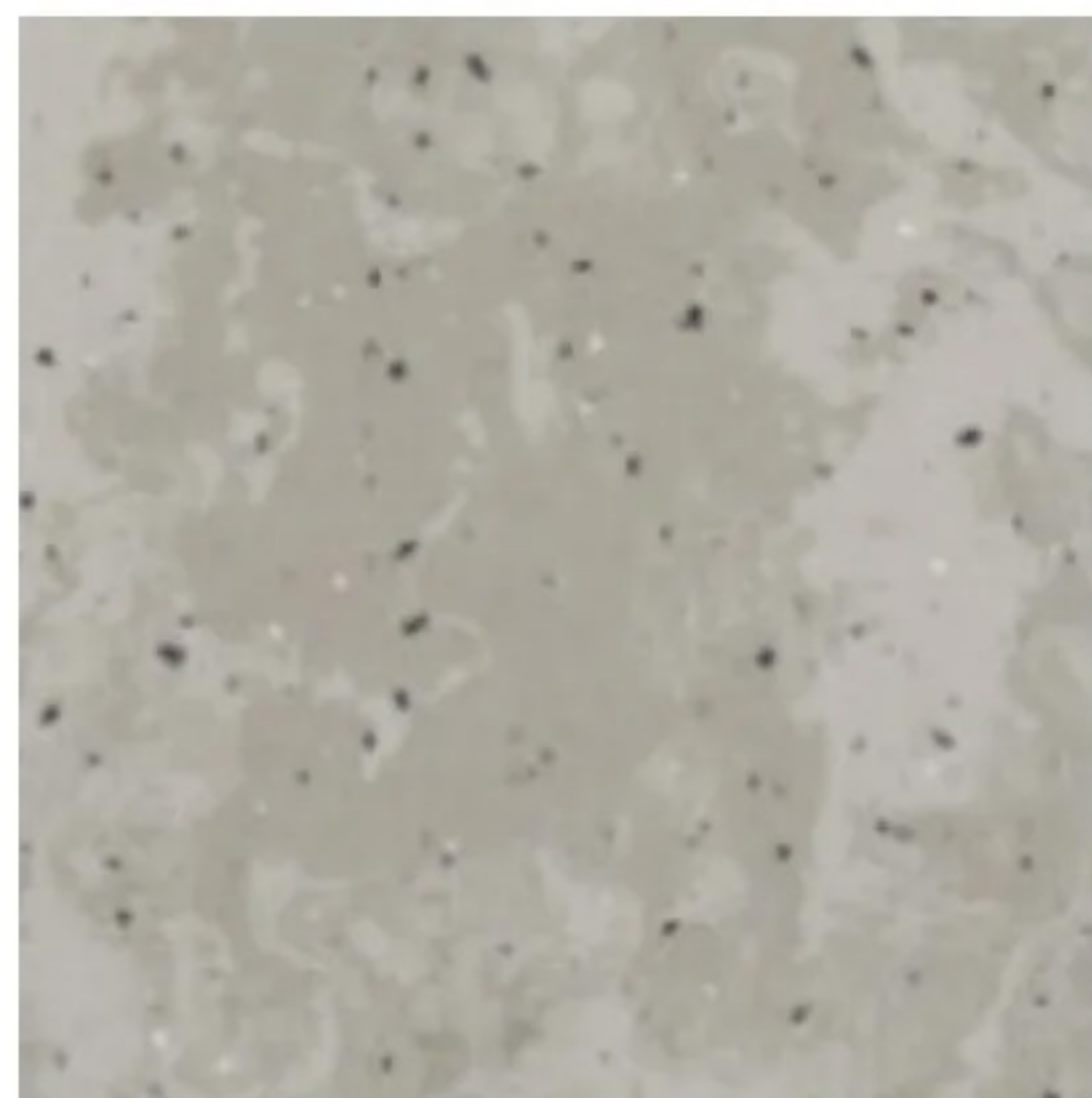
**AVAILABLE FOR TUFLEX® SPARTUS
AND TUFLEX® SPARTUS MARBLE**
Square edge or interlocking styles.



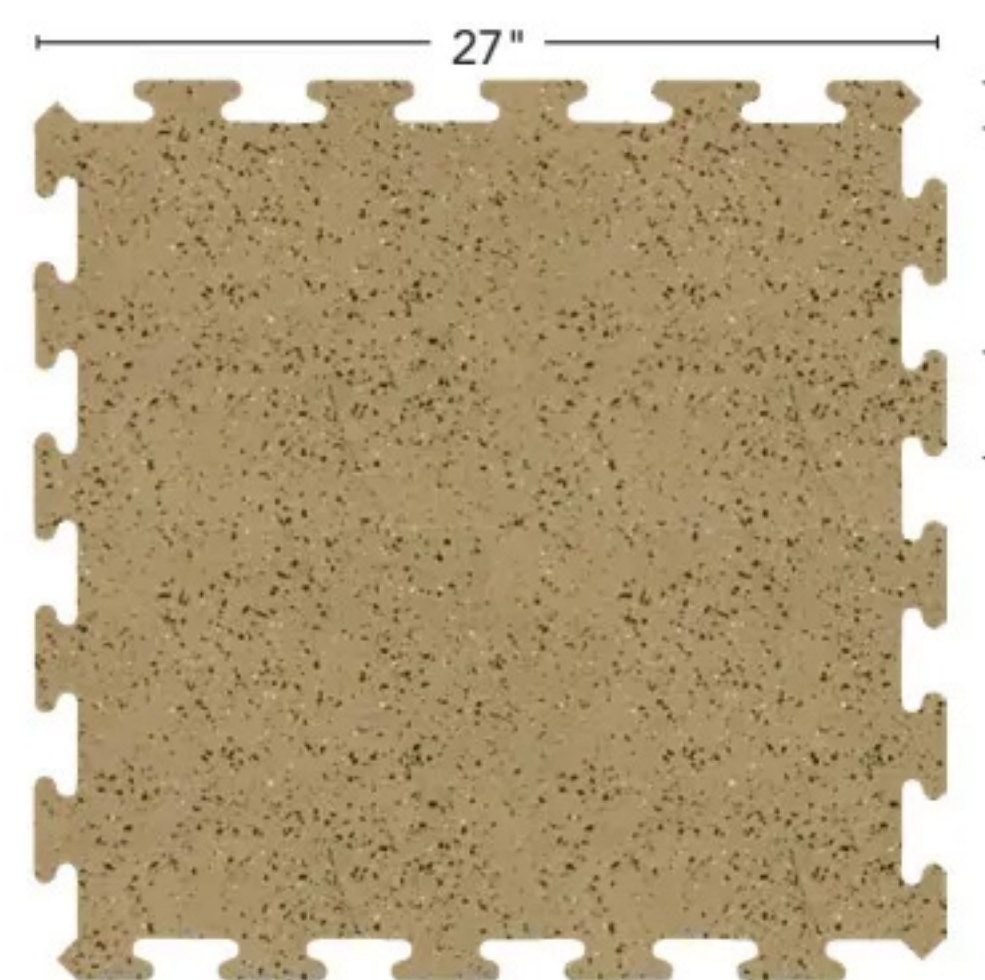
27" x 27" square edge, 5.06 sq. ft. per tile



M932 cocoa marble



M936 dusk marble

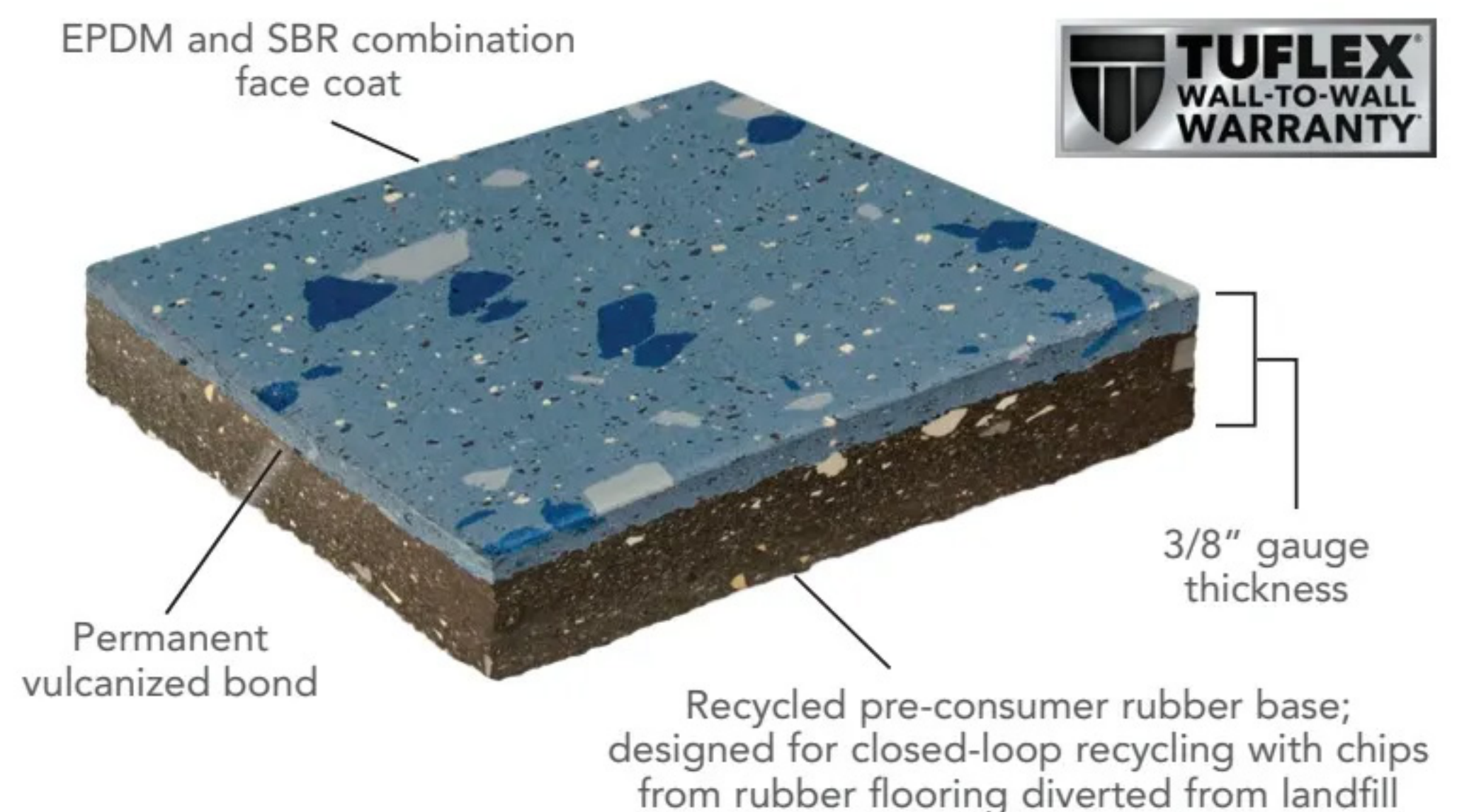


25-3/4" x 25-3/4" interlocking, 4.6 sq. ft. per tile



Tuflex® Spartus Marble, M932 Cocoa Marble

GUARANTEED NOT TO CUP, CROWN OR BUCKLE. EVER.



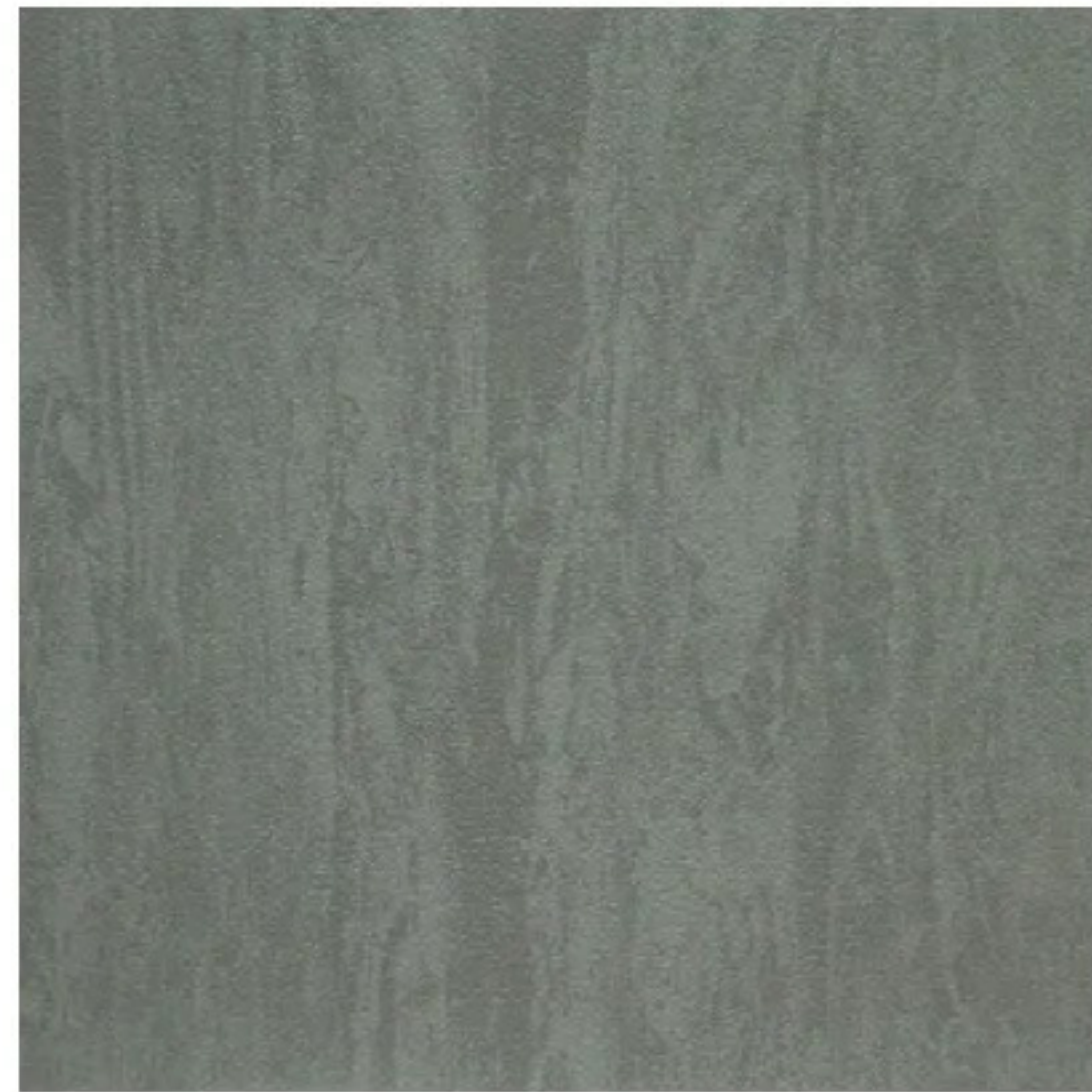
GALLANT

MULTI-USE RUBBER TILE

proudly made in the
USA



M100 black



M123 charcoal



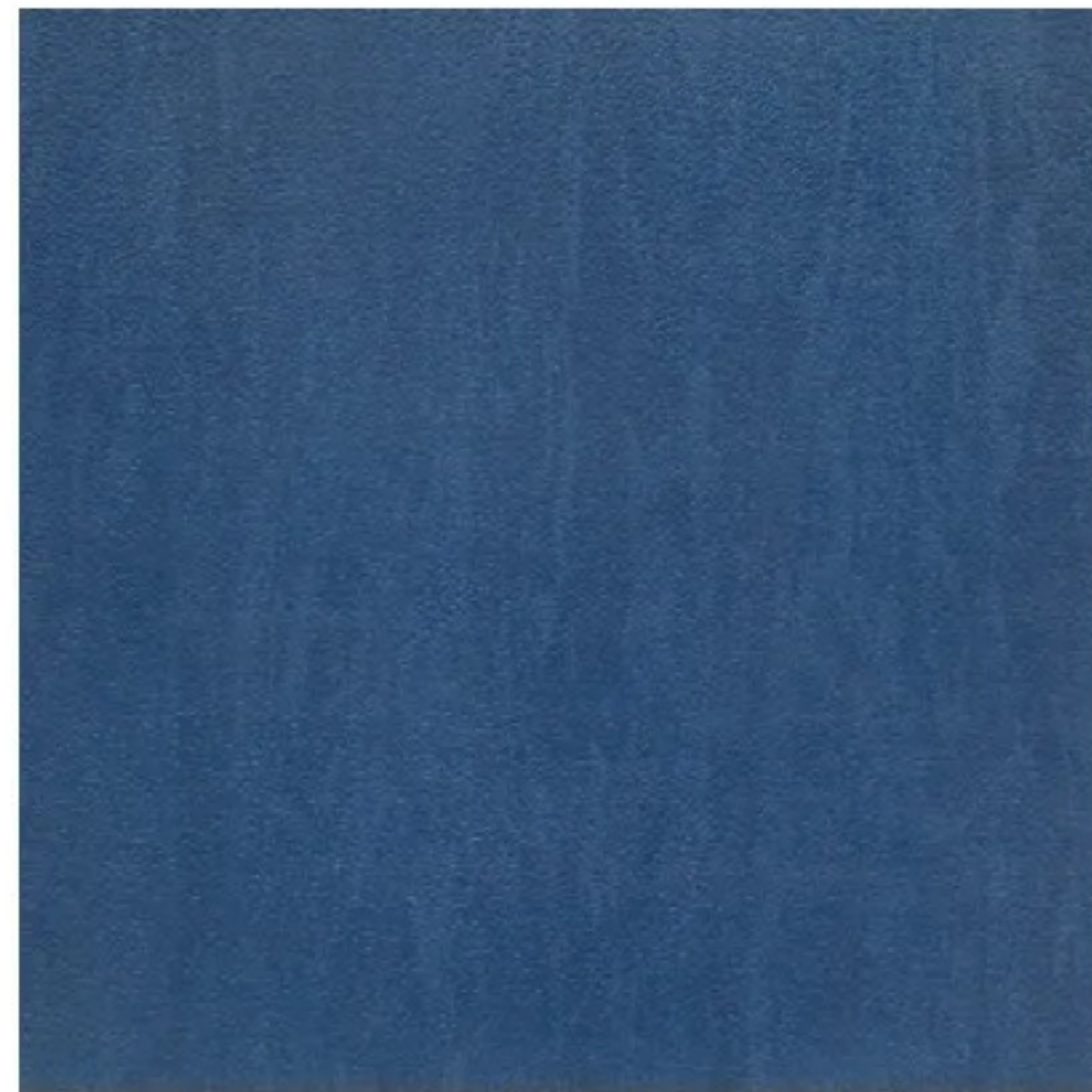
M174 smoke



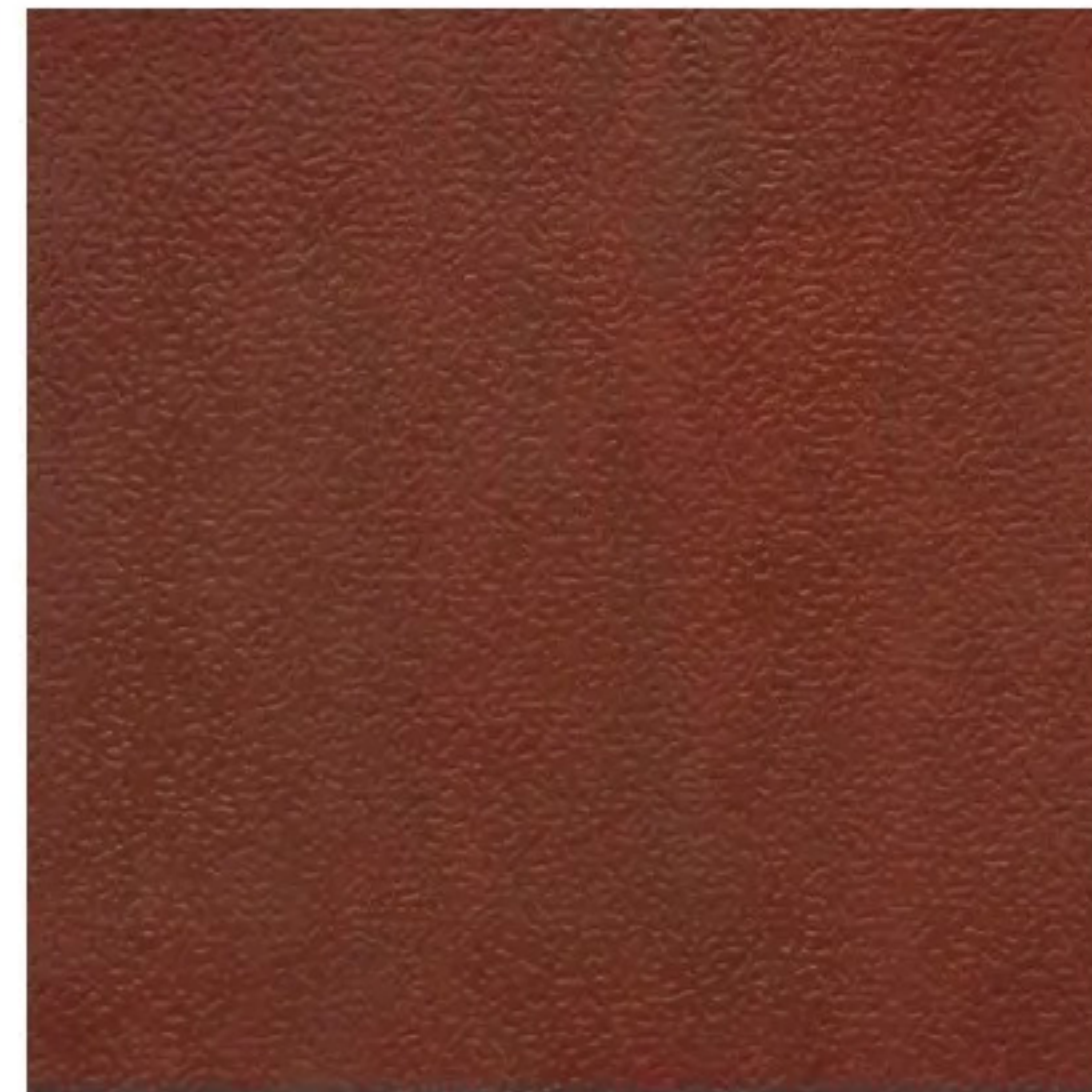
M194 burnt umber



M677 gingerbread



M627 mariner



M137 cinnabar

GALLANT SPECS

Size	24" x 24"
Gauge	1/4" (6.3 mm)
Surface	995 Hammered



PVC FREE

ASTM

floor score

TESTED BY SCS Global Services



VERIFIED SUSTAINABILITY



MEMBER



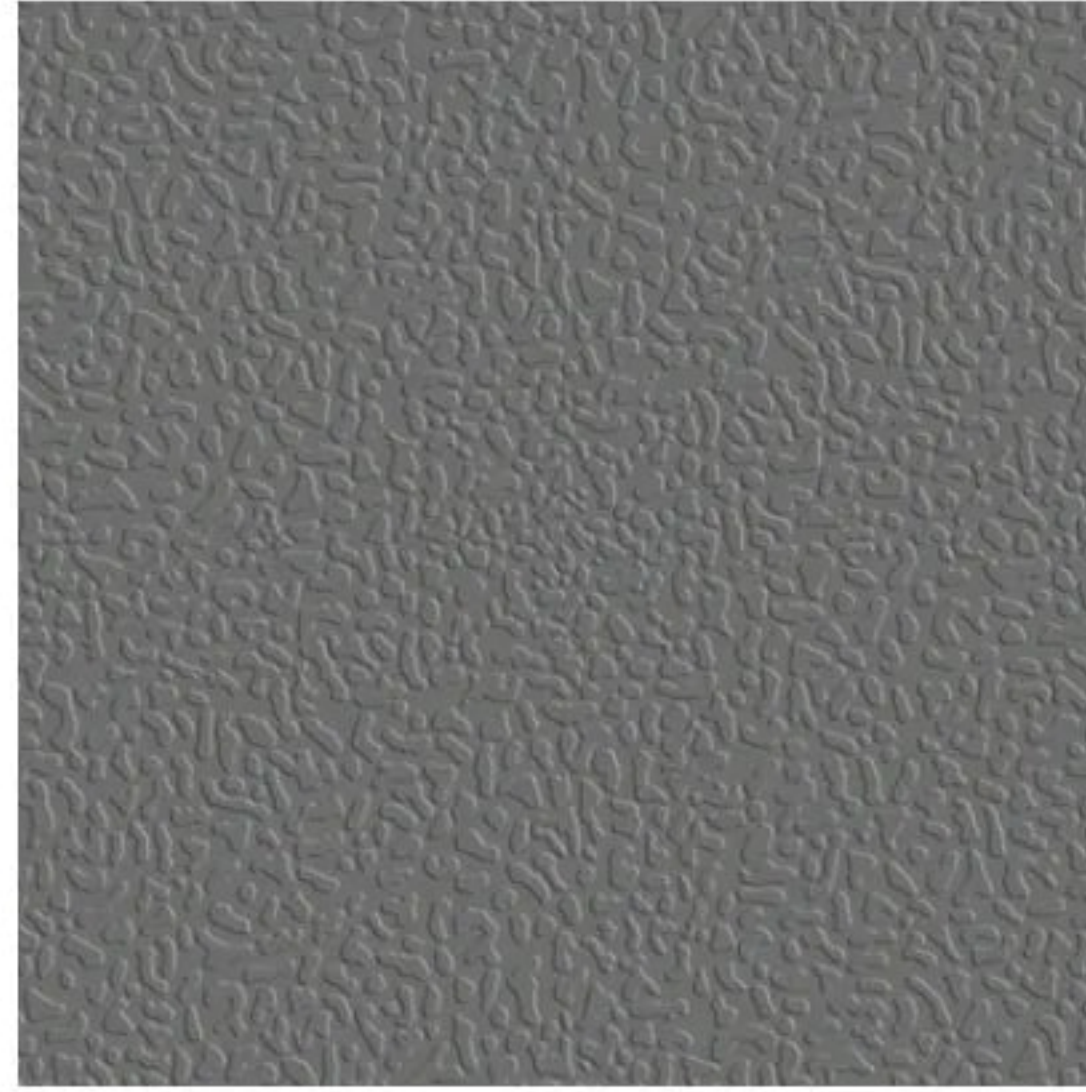
RESPONSIBILITY



Gallant, M194 Burnt Umber



100 black



123 charcoal



174 smoke



194 burnt umber



677 gingerbread



627 mariner



137 cinnabar



ARMOUR SPECS

Size	19-11/16" x 19-11/16" (50 cm)
Gauge	1/4" (6.3 mm)
Surface	993 Textured



MULTI-USE FLOORING

RUBBER TILE AND VINYL SHEET



Red List Chemical Free

Rubber products are free of Red List chemicals, PVC, phthalates and halogens.



Sustainable Solutions

Tuflex® Spartus, Tuflex® Spartus Marble, Gallant and Armour are made in the U.S.A. and meet FloorScore®, NSF/ANSI 332 Level 1 and CHPS criteria.



High-Performance Sheet Vinyl

ShockGuard's multi-layered construction and 9/32" (7 mm) thickness delivers superior sound absorption and offers enhanced resilience to protect backs, knees and joints from shock, helping to prevent injuries. Logos and line kits available.



Rubber Tile Custom Color Matching

Multi-use rubber tile can be produced in custom colors to match your overall design palette, paint colors, school logo or corporate branding. Minimum order quantities apply, contact us for details.



Waterjet Cutting

Perfect for incorporating logos and mascots, and for wayfinding, our precision-engineered waterjet cutting capabilities provide seamless designs that are cut into the flooring in the manufacturing process, not on the jobsite for cleaner designs with no jagged edges and better accuracy.



Single Price Point

All colors available at a Single Price Point within your selected palette.



Installation



Roppe products are easy to install & maintain using our Excelsior™ Products. Visit roppe.com for the most current recommendations.



Maintenance

Find the most current lineup of Roppe product folders online at roppe.com.



Digital Folders

ROPPE
Proven. Flooring. Experiences.



Sustainable
Minds

ROPPE UNIVERSITY



proudly made in the
USA

185-670 4/24