



Acoustic vinyl

modul'up[®] 19dB | compact
sarlon[®] 19dB | 15dB



Loose lay flooring



Glue down flooring



25 x 2 m



modul'up® | sarlon®

Modul'Up: Expertise and Innovation in Loose lay Flooring Sarlon: Expertise and Heritage in Acoustic Flooring

The perfect blend of style and functionality that is our Modul'up and Sarlon flooring. Advanced acoustic technology ensures Sarlon's optimal sound absorption. Engineered for low indentation it withstands heavy traffic in the building while maintaining its pristine appearance.

When it comes to loose lay flooring, Modul'up stands unrivaled. Years of innovation and experience, brings the best-in-class solution, trusted and tested worldwide. With its adhesive-free installation it allows continuous operation, ensuring cost savings and a sustainable, circular solution.

Elevate the aesthetic of any space with the extensive range of attractive designs all available in both Modul'up and Sarlon. Trust the experts of Forbo to deliver flooring that meets the highest standards in an extensive design collection that caters for every taste and style.

In this sample book you will find the full range of items that are available in no less than 4 different high performance constructions. The diversity in constructions all come with their own benefits and advantages, all available in this wide range of designs and colours as shown in this book.

Modul'up products are part of the circular economy product design concept and do not require any glue or adhesive tape.

All 4 products have 20% or more recycled content, very low emissions, are phthalate free and made with green energy and meet all relevant environmental and quality standards.

All products have the extremely high performance Xtrem PUR protection with:

- Best possible chemical resistance, blocking even the toughest stains for an easy maintenance
- Durable resistance against scuff, scratch and other appearance disturbances
- Easy to clean surface, giving no room for bacteria to grow, and perfectly hygienic
- Natural matt appearance to enhance the design and R10 slip resistance rating



modul'up® 19dB

THE BEST FULLY LOOSE LAID SHEET ACOUSTIC SOLUTION

- Quick installation, no downtime, immediate use possible
- Long term benefit of very quick replacement and removal, saving money over time
- Offering all benefits of the best performing acoustic in one product



modul'up® compact

THE BEST FULLY LOOSE LAID SHEET COMPACT SOLUTION

- Speed of installation and renewal reduces downtime, the floor is immediately ready for use
- Compact and strong solution for heavy traffic and intense use
- Installation over existing flooring is in many cases possible but also on new, not fully dried concrete floors, there is no risk since no adhesive is used



sarlon® 19dB

THE BEST ACOUSTIC HIGH TRAFFIC PRODUCT IN THE MARKET

- Highest acoustic sound reduction of 19dB
- Best residual indentation for a 19dB acoustic product
- High performance characteristics on all relevant aspects



sarlon® 15dB

THE BEST COMPROMISE ON ACOUSTIC AND HEAVY TRAFFIC REQUIREMENTS

- Lowest residual indentation for acoustic product, suitable for heavy loads
- 15dB acoustic performance for additional comfort at high performance
- A unique product proposition in the market

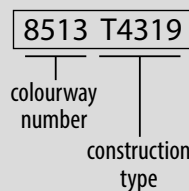
Each item in this samplebook is available in all 4 constructions; **Modul'up 19dB**, **Modul'up compact**, **Sarlon 19dB** and **Sarlon 15dB**.
Underneath each sample you only find the colour number.
To order the right construction, please add the following codes as suffix to the colour number.



Example:

When you want the item blond chill oak in Sarlon 19dB, you take colour number 8513 and add T4319 at the end.

This is how you would specify this example order:









8483 | Scandinavian oak

LRV 32%



8413 | natural oak

LRV 32%



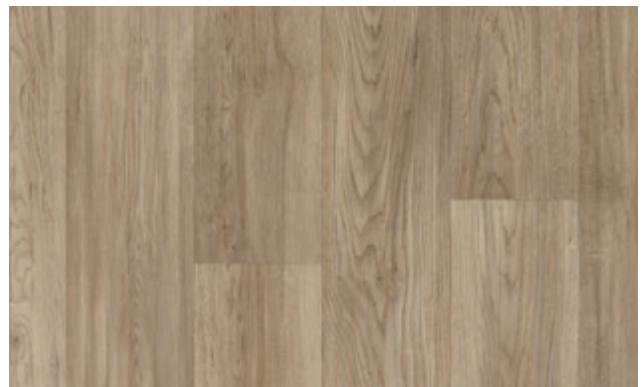
8421 | polar oak

LRV 39%



8513 | blond chill oak

LRV 29%



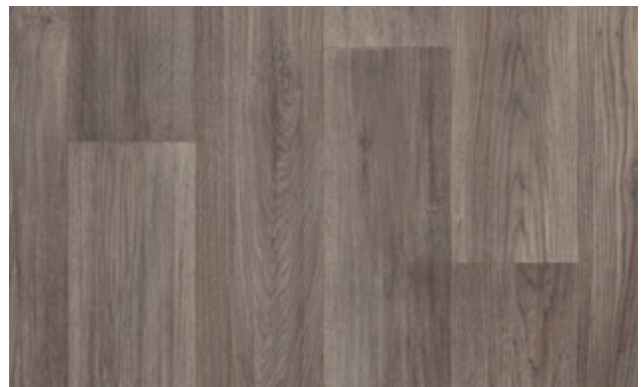
8514 | pure chill oak

LRV 27%



8521 | whitewashed chill oak

LRV 42%



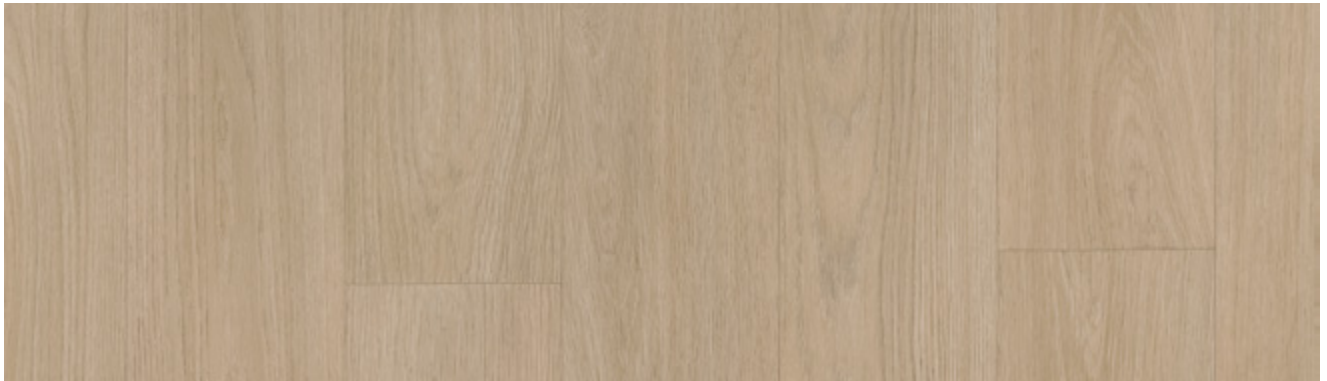
8512 | smoked chill oak

LRV 25%





8804 | natural boreal oak **0847** | soft blue uni



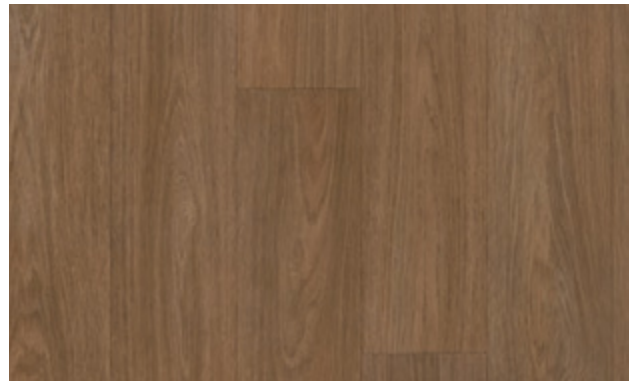
8804 | natural boreal oak

LRV 31%



8813 | classic boreal oak

LRV 23%



8803 | dark boreal oak

LRV 14%



8703 | natural narrow oak

LRV 37%



8701 | grey narrow oak

LRV 37%



8713 | medium narrow oak

LRV 32%



8723 | weathered narrow oak

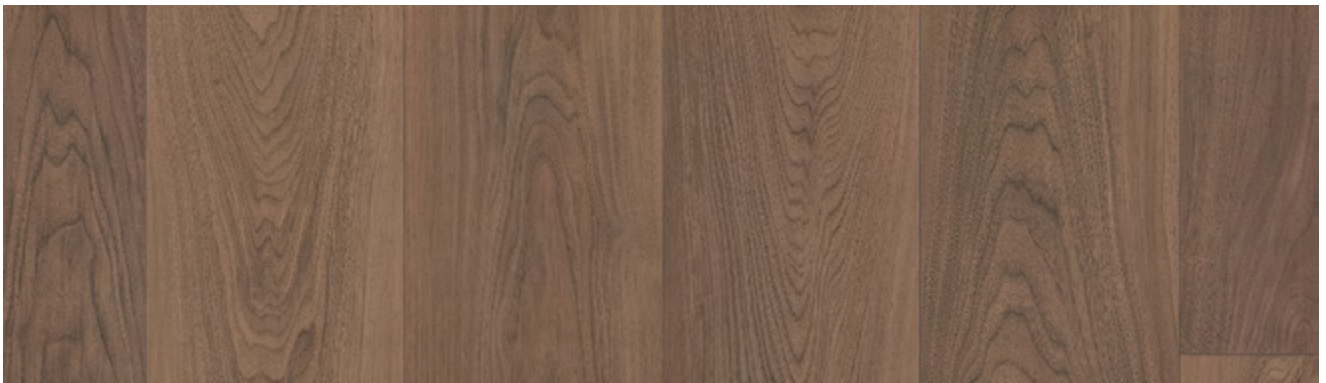
LRV 34%



8723 | weathered narrow oak

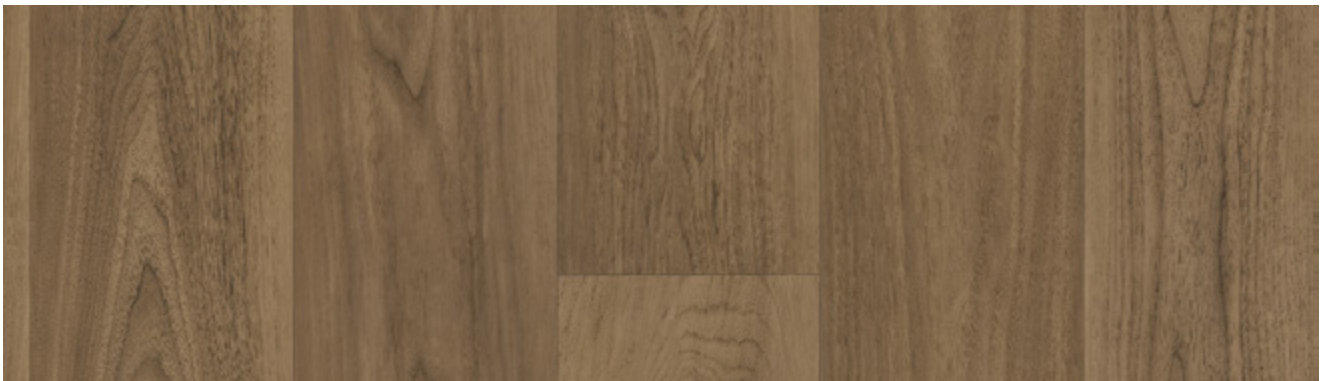


90403 | warm mini terrazzo **98144** | dark walnut



98103 | natural walnut

LRV 16%



98144 | dark walnut

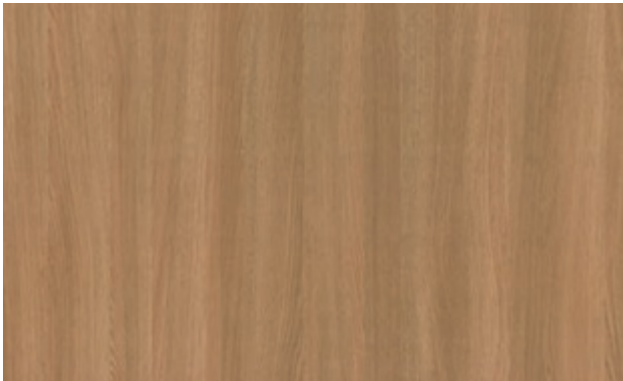
LRV 10%





98603 | whitewashed infinity oak

LRV 36%



98613 | natural infinity oak

LRV 23%



98623 | dark infinity oak

LRV 16%

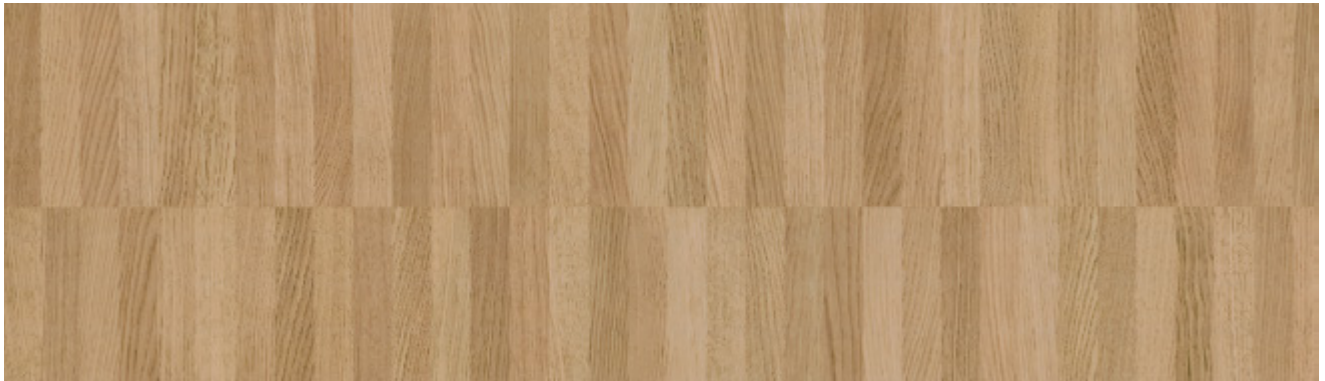


98613 | natural infinity oak 90706 | floral halo



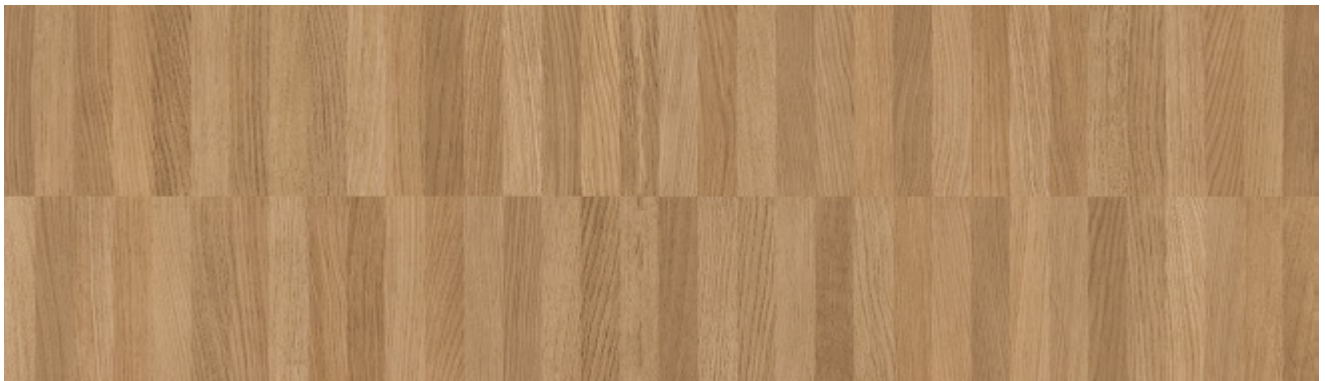


98714 | golden industrial parquet **0858** | artichoke uni



98713 | light industrial parquet

LRV 34%



98714 | golden industrial parquet

LRV 28%





98503 | natural shaped wood

LRV 34%



98513 | contrasted shaped wood

LRV 29%



98523 | honey shaped wood

LRV 24%





4572 | medium grey cement LRV 26%



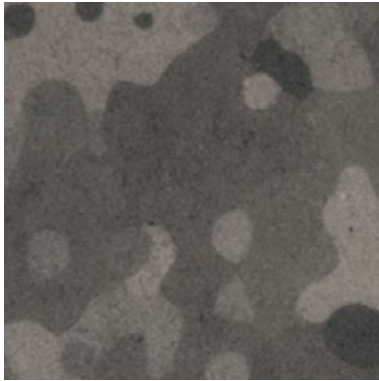
92312 | anthracite new nairobi LRV 22%



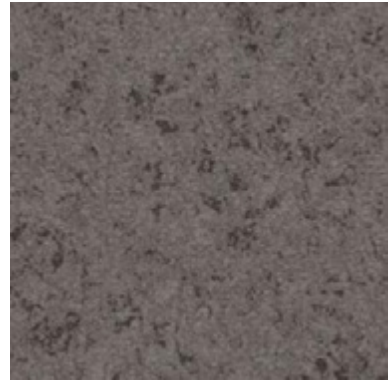
4771 | silver concrete **90909** | grey mimetico



4579 | slate cement LRV 15%



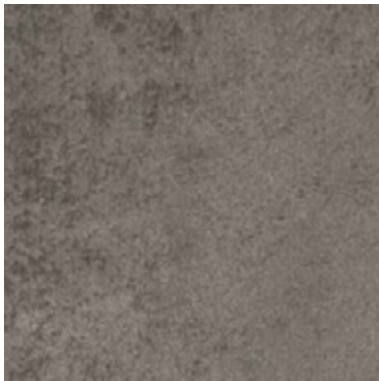
90909 | grey mimetico LRV 15%



4209 | medium grey canyon LRV 19%



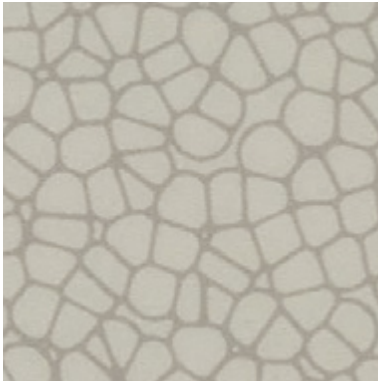
4742 | pewter concrete LRV 12%



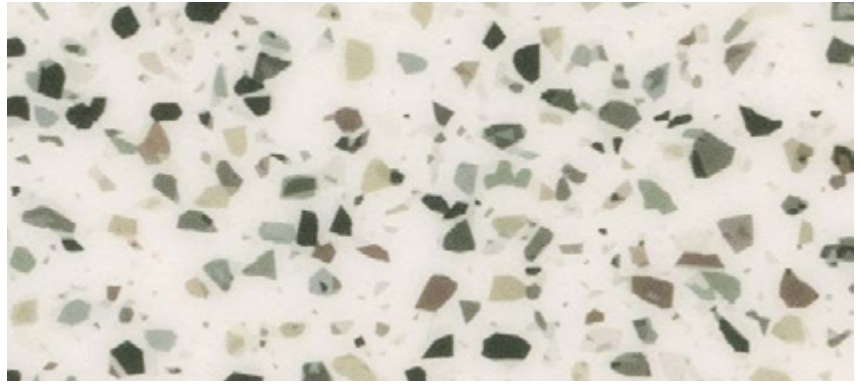
4761 | steel concrete LRV 16%



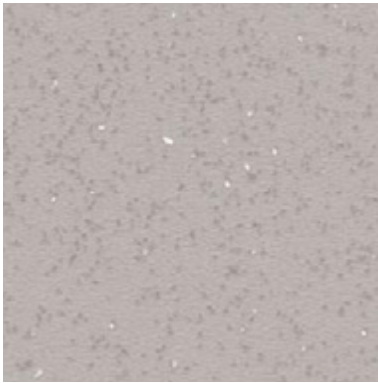
0869 | charcoal uni LRV 13%



90752 | grey halo contour LRV 40%



90401 | grey mini terrazzo LRV 56%



3801 | pearl cristal LRV 41%



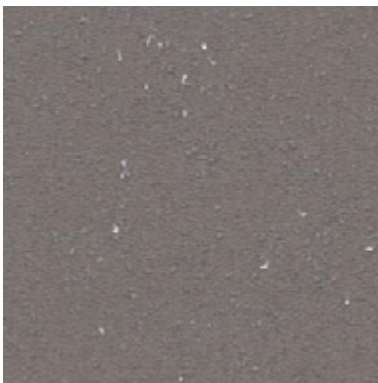
4771 | silver concrete LRV 28%



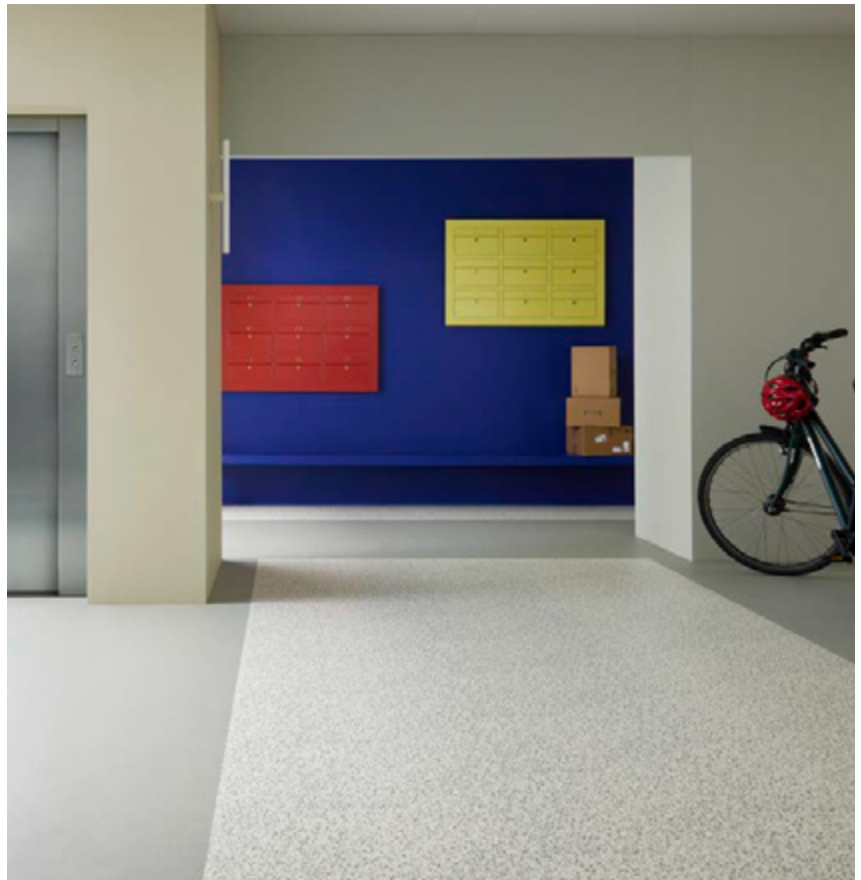
4602 | pebble urban concrete LRV 32%



92302 | light grey new nairobi LRV 28%



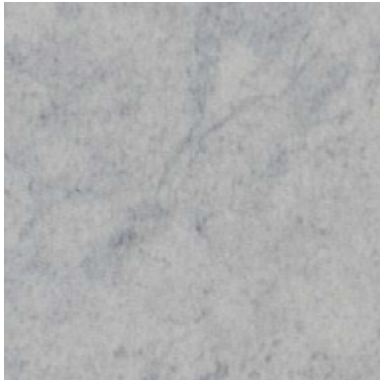
3819 | medium grey cristal LRV 18%



90401 | grey mini terrazzo **90752** | grey halo contour



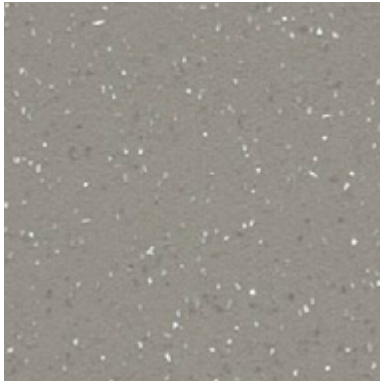
0861 | light grey uni LRV 41%



4612 | fog urban concrete LRV 34%



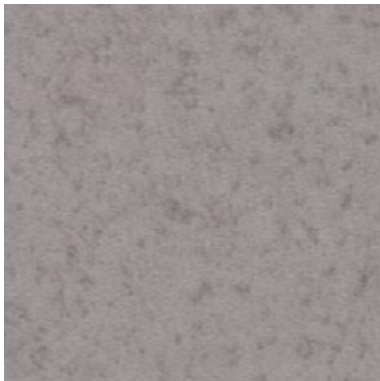
4601 | cloud urban concrete



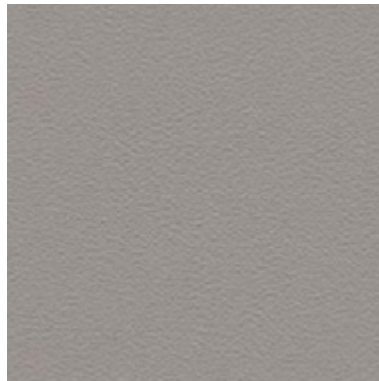
3812 | light grey cristal LRV 29%



4601 | cloud urban concrete LRV 49%



4212 | grey canyon LRV 27%



0862 | stone grey uni LRV 27%



4211 | light grey canyon LRV 34%



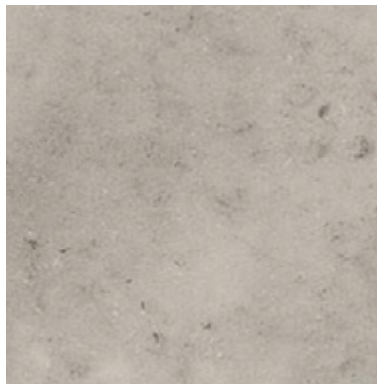
91651 | grey travertine

LRV 47%



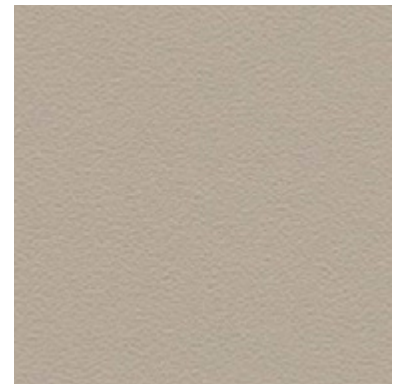
4200 | ivory canyon

LRV 50%



4570 | chalk cement

LRV 49%



0863 | beige grey uni

LRV 39%



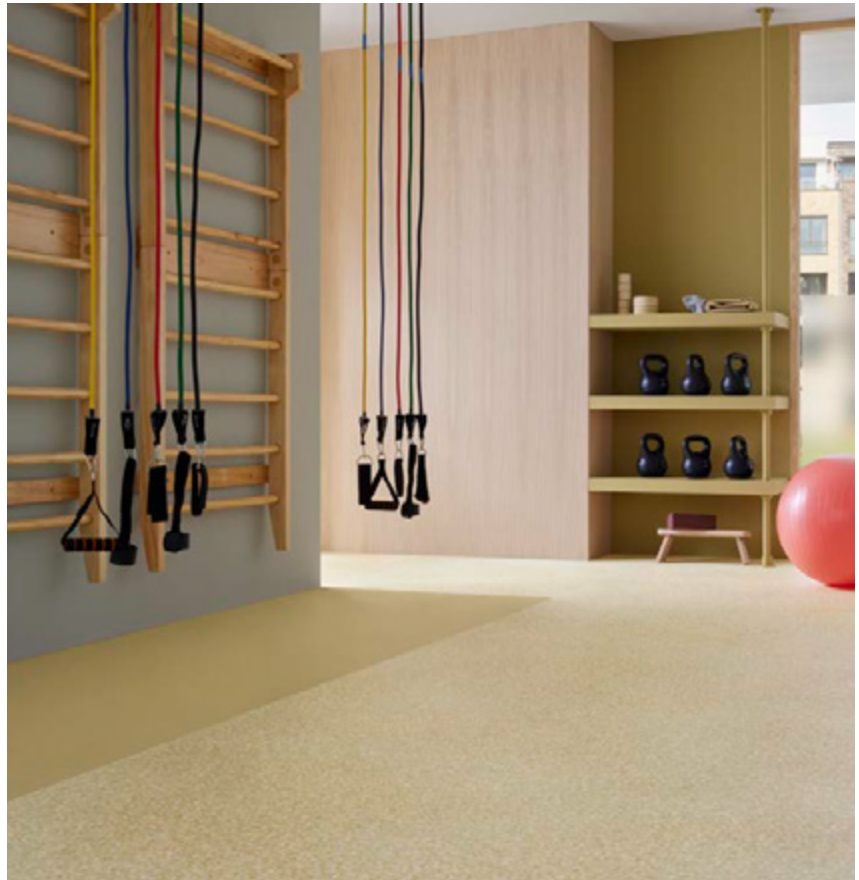
91651 | grey travertine **0863** | beige grey uni



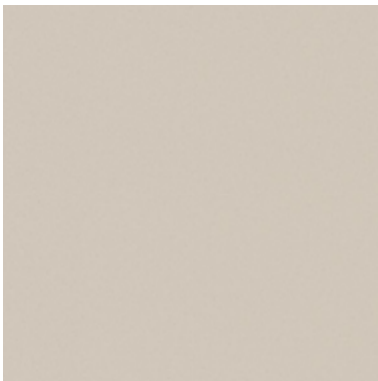
90403 | warm mini terrazzo LRV 59%



4573 | clay cement LRV 41%



90204 | soft ochre canyon **90703** | champagne halo



0843 | clay uni LRV 47%



4613 | mortar urban concrete LRV 37%



4603 | seashell urban concrete LRV 50%



92303 | sand new nairobi LRV 27%

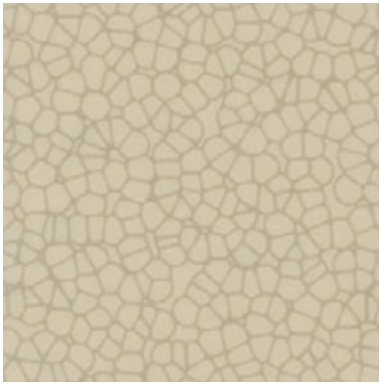


4713 | peanut concrete LRV 28%

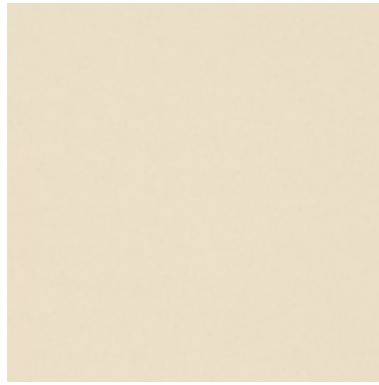


3811 | grey beige cristal LRV 47%





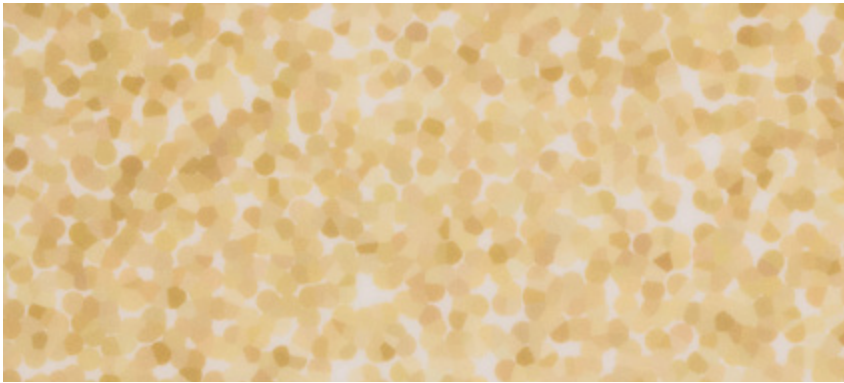
90753 | linen halo contour LRV 43%



3803 | eggshell cristal LRV 66%



0845 | corn uni LRV 60%



90703 | champagne halo

LRV 56%



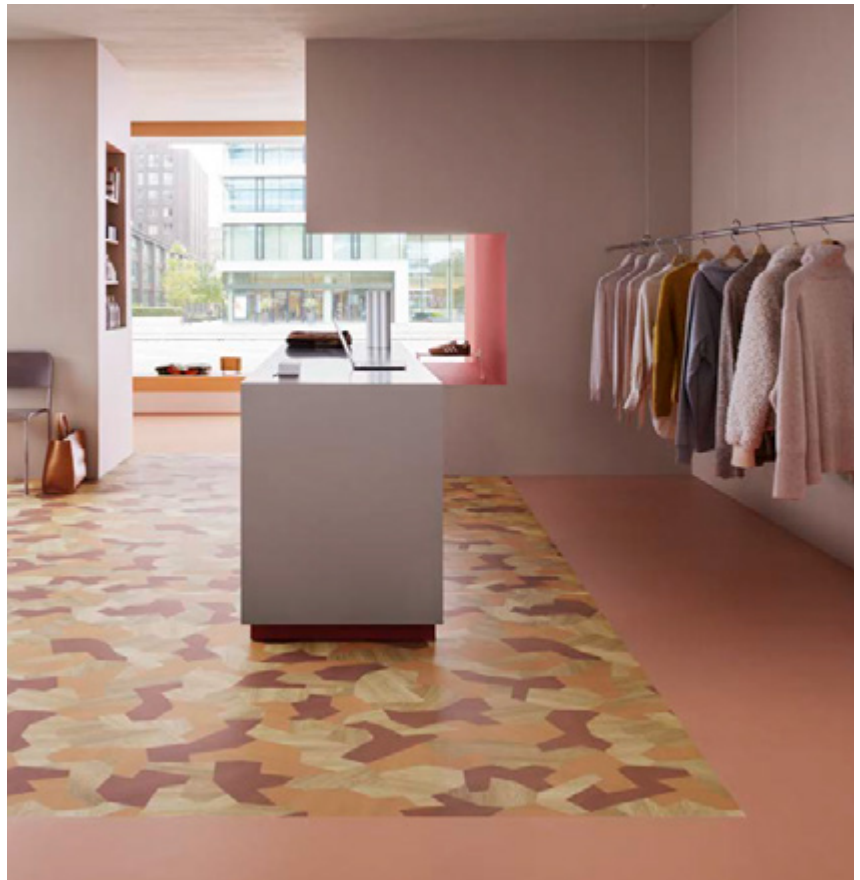
90204 | soft ochre canyon LRV 41%



91653 | natural travertine LRV 50%



92353 | flax new nairobi LRV 38%



98506 | terracotta shaped wood **0846** | terracotta uni

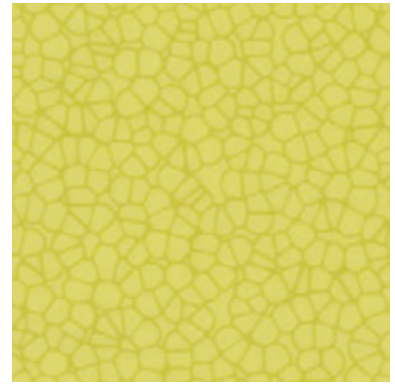




90206 | blush canyon LRV 31%



90706 | floral halo LRV 47%



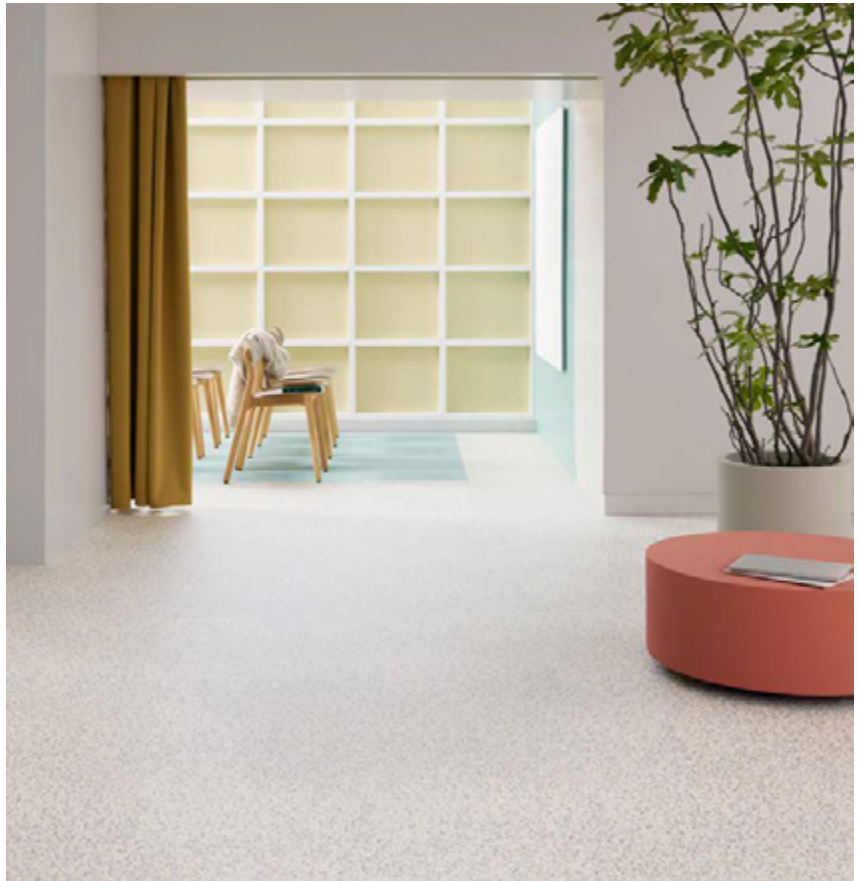
90758 | citrus halo contour LRV 53%



0846 | terracotta uni LRV 29%



0856 | sienna uni LRV 17%



90400 | multicoloured mini terrazzo **0848** | sea green uni



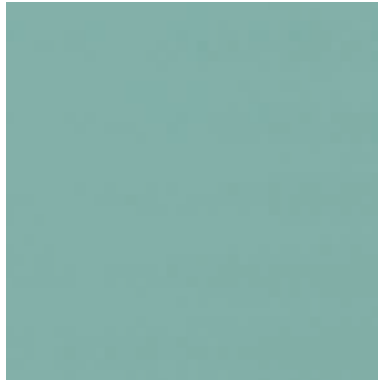
98506 | terracotta shaped wood

LRV 29%





90400 | multicoloured mini terrazzo LRV 54%



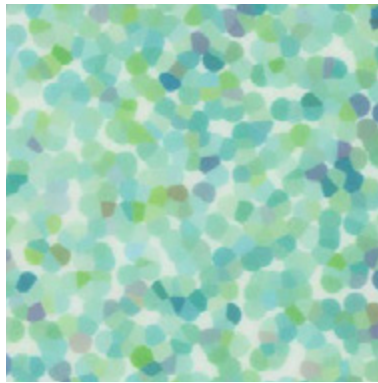
0848 | sea green uni LRV 32%



0847 | soft blue uni LRV 36%



0858 | artichoke uni LRV 28%



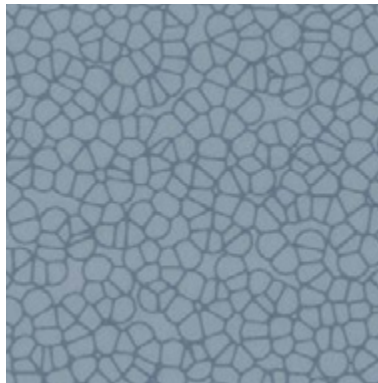
90707 | lagoon halo LRV 46%



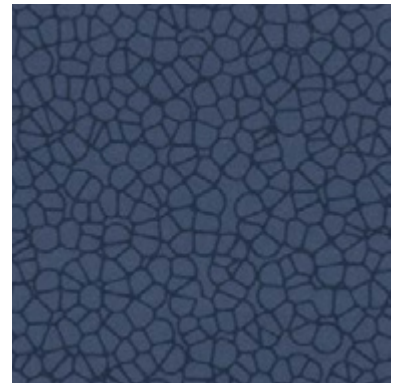
90247 | grey blue canyon LRV 26%



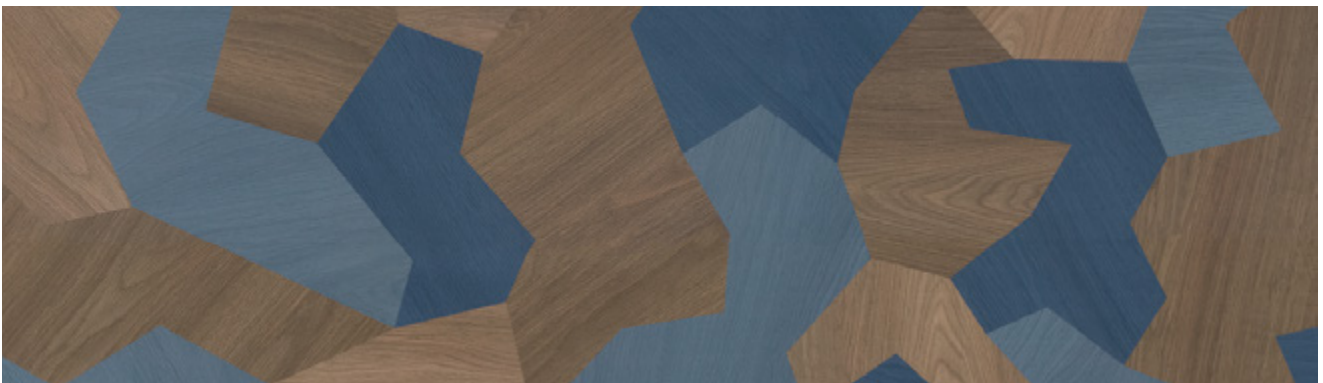
0857 | dusty blue uni LRV 19%



90757 | blue halo contour LRV 30%



90767 | denim halo contour LRV 10%



98507 | blue shaped wood

LRV 15%





























Technical specifications

Modul'up Compact meet the requirements of EN 10582

Modul'up 19 dB, Sarlon 19 dB and Sarlon 15 dB meet the requirements of EN 651 and ISO 11638

		Modul'up 19 dB	Modul'up Compact	Sarlon 19 dB	Sarlon 15 dB	
	Total thickness	EN ISO 24346	3.45 mm	2.0 mm	3.4 mm	2.6 mm
	Wear layer thickness	EN ISO 24340	0.70 mm	0.70 mm	0.70 mm	0.70 mm
	Commercial use	EN ISO 10874	34	34	34	34
	Industrial use	EN ISO 10874	42	43	42	42
	Packaging		Rolls	Rolls	Rolls	Rolls
	Roll length	EN ISO 24341	25 ml	25 ml	25 ml	25 ml
	Roll width	EN ISO 24341	2 m	2 m	2 m	2 m
	Total weight	EN ISO 23997	2.830 g/m ²	2.600 g/m ²	2.900 g/m ²	2.700 g/m ²
	Impact sound reduction	EN ISO 717-2	ΔLw = 19 dB	n.a.	ΔLw = 19 dB	ΔLw = 15 dB
	In-room impact noise	NF S 31-074	Ln,e,w < 65 dB, Class A	Ln,e,w < 75 dB, Class B	Ln,e,w < 65 dB, Class A	Ln,e,w < 65 dB, Class A
	Sound absorption	EN ISO 354 EN ISO 11654	α _w = ± 0.05	α _w = ± 0.05	α _w = ± 0.05	α _w = ± 0.05
	Residual indentation typical value Requirement	EN ISO 24343-1	0.08 mm ≤ 0.20 mm	0.02 mm ≤ 0.10 mm	0.08 mm ≤ 0.20 mm	0.05 mm ≤ 0.20 mm
	Slip resistance	DIN 51130	R10	R10	R10	R10
	Abrasion resistance	EN 660-2	T	T	T	T
	Castor chair resistance	ISO 4918	Yes	Yes	Yes	Yes
	Furniture leg resistance	EN ISO 16581	compliant	compliant	compliant	compliant
	Dimensional stability	EN ISO 23999	≤ 0.10 %	≤ 0.10 %	≤ 0.10 %	≤ 0.10 %
	Colour fastness to light Requirement	EN ISO 105-B02	7 ≥ 6	7 ≥ 6	7 ≥ 6	7 ≥ 6
	Stain resistance	EN ISO 26987	Excellent	Excellent	Excellent	Excellent
	Surface treatment		XtremPUR tm	XtremPUR tm	XtremPUR tm	XtremPUR tm
	Emissions into air : TVOC* at 28 days	EN 16516	≤ 0.01 mg/m ³	≤ 0.01 mg/m ³	≤ 0.01 mg/m ³	≤ 0.01 mg/m ³
	REACH (European regulation)	1907/2006/CE	compliant ⁽¹⁾	compliant ⁽¹⁾	compliant ⁽¹⁾	compliant ⁽¹⁾
	Compliance EN 14041		0200859-DOP-010	0200862-DOP-010	0200859-DOP-010	0200860-DOP-010
	Reaction to fire	EN 13501-1	B _{fl} - s1, L, NCS	B _{fl} - s1, L, NCS	B _{fl} - s1, L, NCS	B _{fl} - s1, L, NCS
	Slip resistance	EN 13893	μ ≥ 0.30	μ ≥ 0.30	μ ≥ 0.30	μ ≥ 0.30
	Body voltage	EN 1815	≤ 2 kV	≤ 2 kV	≤ 2 kV	≤ 2 kV
	Thermal conductivity ⁽²⁾	EN 12524 (EN ISO 10456)	0.25 W/(m.K)	0.25 W/(m.K)	0.25 W/(m.K)	0.25 W/(m.K)

⁽¹⁾ The articles (products) do not contain substances of the candidate list published by ECHA (SVHC substances of very high concern) to be declared in accordance with REACH.

⁽²⁾ The products are suitable for underfloor heating.

* TVOC : total volatile organic compounds

All Forbo Flooring Systems' sales organisations worldwide have a certified Quality Management System in accordance with ISO 9001.

All Forbo Flooring Systems' manufacturing operations have a certified Environmental Management System in accordance with ISO 14001.

The Life Cycle Assessment (LCA) of Forbo Flooring Systems' products is documented in individual Environmental Product Declarations (EPD's) which can be found on all of our websites.

Exclusively distributed by Centura / Distribué exclusivement par Centura : www.centura.ca

centura.ca/en/professional-space

centura.ca/fr/espace-professionnel

MONTRÉAL
T (514) 336-4311

TORONTO
T (416) 785-5165

LONDON
T (519) 681-1961

OTTAWA
T (613) 820-6622

QUÉBEC
T (418) 653-5267

PETERBOROUGH
T (705) 743-2881

WINDSOR
T (519) 966-3580

HAMILTON
T (905) 383-5100

HALIFAX
T (902) 468-7679

CALGARY
T (403) 259-0106

VANCOUVER
T (604) 298-8453

ST.JOHN'S
T (709) 579-4600

EDMONTON
T (780) 454-8591